



PLATTE VALLEY BANK
5271 EAST 2ND STREET
CASPER, WY 82609



PROJECT NUMBER
15-005

DATE
JANUARY 27, 2017

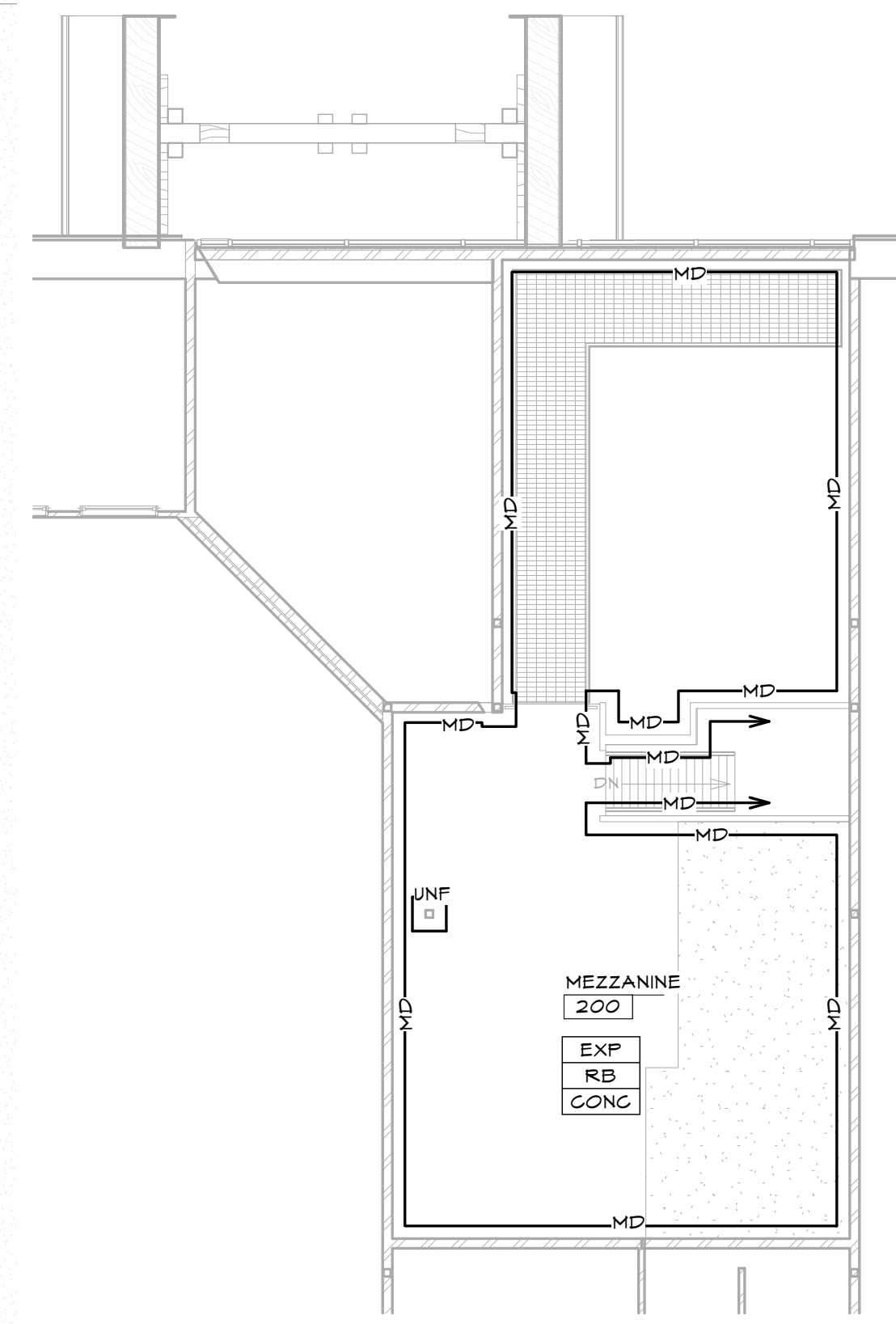
DRAWN BY
A. WILLIAMSON

DISK ID.
15-015 PLATTE VALLEY BANK_CENTRAL.RVT
SHEET TITLE
FINISH FLOOR PLANS

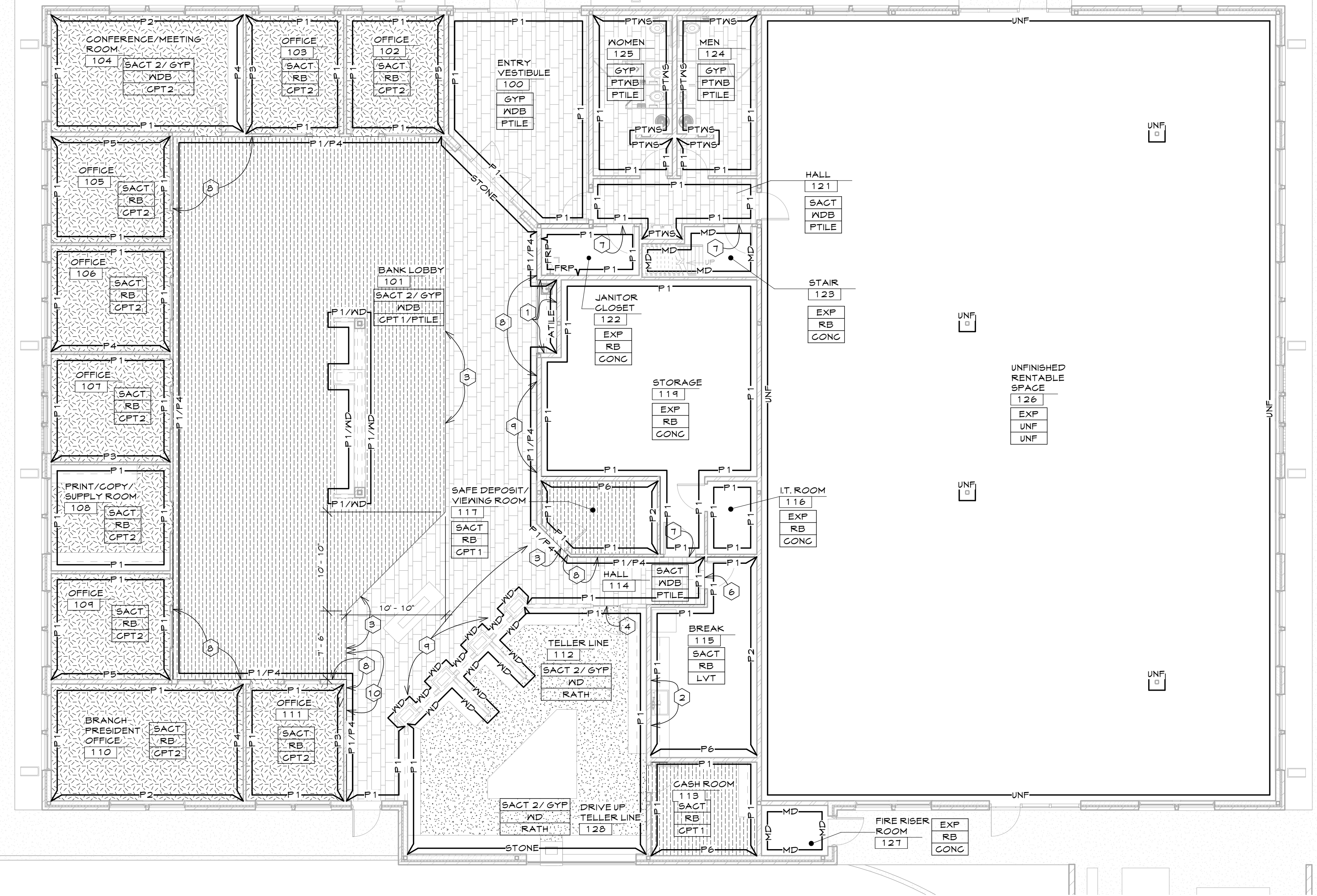
SHEET NUMBER
9.10

LEGEND

	WALL FINISH MATERIAL	
	CEILING BASE	
	FLOOR	
DENOTES LOCATION OF CHANGE IN WALL FINISH		
GYP	GYPSUM BOARD CEILING, NON-SAG GYPSUM BOARD	
EXP	EXPOSED, OPEN TO STRUCTURE ABOVE/UNFINISHED	
SACT	SUSPENDED ACOUSTIC CEILING TILE, SEE THE REFLECTED CEILING PLAN	
SACT2	WOOD PLANK SUSPENDED ACOUSTIC CEILING, SEE REFLECTED CEILING PLAN	
RB	4" RUBBER WALL BASE, PAT/CRAFT, COLOR 'BUCKHORN' # 00710	
MDB	WOOD WALL BASE: 1X5 MAPLE WOOD, STAIN IN FIELD, SEE DETAIL 1/4.10	
PTWB	PORCELAIN TILE WALL BASE, FLORIM USA, GALAXY, COLOR 'BEIGE' 6" X 12" COVE BASE, USE LATICRETE EPOXY GROUT, COLOR: 90 LIGHT PEWTER	
PTILE	PORCELAIN FLOOR TILE, FLORIM USA, GALAXY, COLOR 'BEIGE' 12" X 24" AND 6" X 24" TILE, SEE FLOOR PLAN FOR INSTALLATION PATTERN, USE LATICRETE EPOXY GROUT, COLOR: 90 LIGHT PEWTER	
PTMS	PORCELAIN TILE WALL TILE (TO 5'-6" HEIGHT); FLORIM USA, GALAXY, COLOR 'BEIGE' 12" X 24" TILE, USE LATICRETE EPOXY GROUT, COLOR: 90 LIGHT PEWTER. PAINT ABOVE TILE TO BE COLOR P1 FROM 5'-6" HEIGHT TO CEILING/STRUCTURE ABOVE. ACCENT TILE TO BE CAPCO BLISS, COLOR: 12" HIGH GLASS AMBER TEA SLATE, INSTALLED AT 4'-0" AFF, CUT SHEET DOWN TO 6" HEIGHT; USE LATICRETE EPOXY GROUT, COLOR: 90 LIGHT PEWTER	
ATILE	ACCENT TILE: CAPCO BLISS, COLOR: 12" HIGH GLASS AMBER TEA SLATE, INSTALLED AT 3'-0" AFF, USE LATICRETE EPOXY GROUT, COLOR: 90 LIGHT PEWTER	
CPT1	CARPET TILE: SHAM CONTRACT, STILL TILE, COLOR: 'EMBER', TILE SIZE 18" X 36", SEE DETAIL 2/4.10 FOR INSTALL PATTERN DETAIL	
CPT2	BROADLOOM CARPET: SHAM CONTRACT, CONTE ULTRA LOG, COLOR: 'PARCHMENT'	
RATH	RUBBER ATHLETIC FLOORING: EGO SURFACES, CLASSIC, COLOR: '#648A CHUNKY MONKEY' 48" ROLLS, 9MM THICKNESS WITH 5MM EGO COMFORT UNDERLAYMENT	
LVT	LUXURY VINYL TILE: TARKETT, TANDUS/CENTIVA, MODERN STONE, CONTOUR SERIES, COLOR: 'VOLGA' 18" X 18" TILE	
CONC	SEALED CONCRETE, CLEAR COAT SEALANT, SMOOTH SURFACE, NO COLOR	
STONE	BORAL, COUNTRY LEDGESTONE, COLOR 'HUDSON BAY', NATURAL GROUT	
MD	WOOD VENEER, SEE INTERIOR ELEVATIONS	
P1	PAINTED GYPSUM BOARD, COLOR: SHERWIN WILLIAMS 'HONEY WHITE' #SW1106, SATIN FINISH	
P2	PAINTED GYPSUM BOARD, COLOR: SHERWIN WILLIAMS 'MORRIS ROOM GRAY' #SW0031, SATIN FINISH	
P3	PAINTED GYPSUM BOARD, COLOR: SHERWIN WILLIAMS 'CURIO GRAY' #SW0024, SATIN FINISH	
P4	PAINTED GYPSUM BOARD, COLOR: SHERWIN WILLIAMS 'WARM STONE' #SW1032, SATIN FINISH	
P5	PAINTED GYPSUM BOARD, COLOR: SHERWIN WILLIAMS 'WEATHERED SHINGLE' #SW2841, SATIN FINISH	
P6	PAINTED GYPSUM BOARD, COLOR: SHERWIN WILLIAMS 'ROYAL ROFT COPPER RED' #SW2839, SATIN FINISH	
P7	PAINTED GYPSUM BOARD, COLOR: SHERWIN WILLIAMS 'RUGGED BROWN' #SW6062, SATIN FINISH	
P8	PAINTED METAL, COLOR: SHERWIN WILLIAMS 'MOCHA' #SW6067	
P9	PAINTED METAL, COLOR: SHERWIN WILLIAMS 'HOT COCOA' #SW6047	
P1/P4	PAINT P1 COLOR ABOVE CHAIR RAIL, PAINT P4 COLOR BELOW CHAIR RAIL, SEE 1/4.10	
P1/MD	PAINT P1 COLOR ABOVE TECH BAR CASEWORK, SEE THE INTERIOR ELEVATIONS	
UNF	UNFINISHED	
FRP	REINFORCED FIBERGLASS PANEL, SEE INTERIOR ELEVATIONS, COLOR WHITE	
MD	DRYWALL TAPED/MUDD (UNFINISHED)	



MEZZANINE FINISH FLOOR PLAN
SCALE: 1/8" = 1'-0"



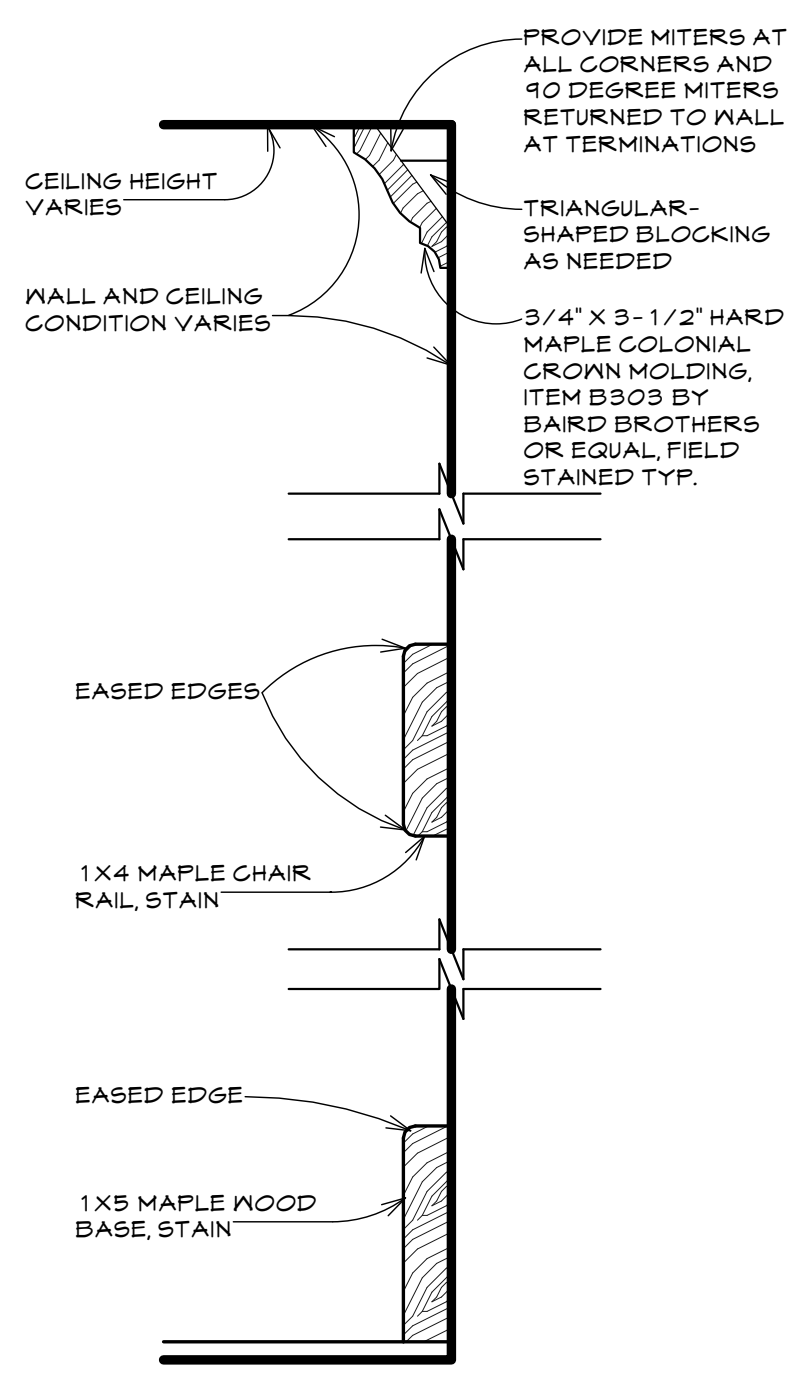
FIRST FLOOR FINISH FLOOR PLAN
SCALE: 1/8" = 1'-0"

GENERAL NOTES:

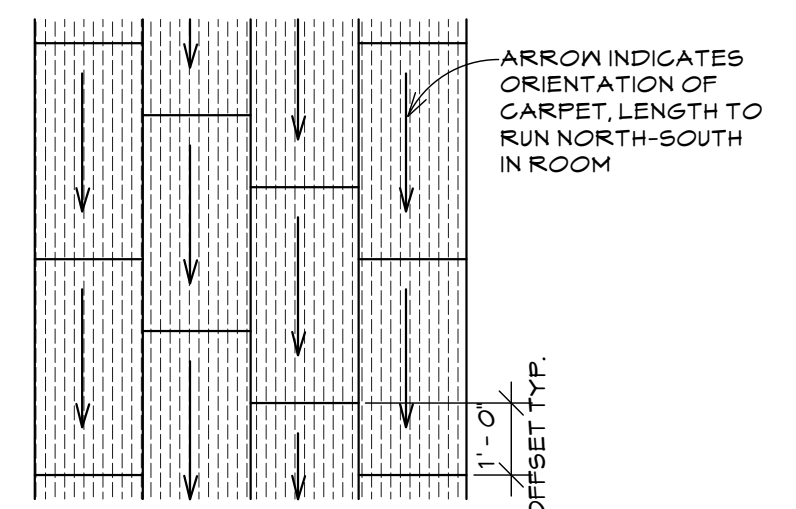
- LEGEND, GENERAL NOTES, KEYNOTES, AND LEGEND ON THIS SHEET REFER TO THIS SHEET ONLY.
- MECHANICAL AND ELECTRICAL EQUIPMENT HAS NOT BEEN SHOWN ON THIS PLAN FOR CLARITY.
- SEE THE INTERIOR ELEVATIONS, REFLECTED CEILING PLANS, STAIR DETAILS, BUILDING ELEVATIONS, AND DOOR/WINDOW DETAILS FOR ADDITIONAL FINISHES NOT SHOWN/INDICATED ON THIS PLAN.
- ALL FINISHES EXTEND FROM FLOOR TO BOTTOM OF STRUCTURE ABOVE UNLESS NOTED OTHERWISE.
- ALL PAINTED GYPSUM BOARD WALLS TO RECEIVE A LIGHT TROMEL TEXTURE, CONTRACTOR TO PROVIDE 3 MOCK UP SAMPLES IN FIELD FOR APPROVAL BY ARCHITECT AND OWNER.
- ALL 90 DEGREE OUTSIDE (VERTICAL) CORNERS TO BE ROUNDED, TYPICAL.
- USE MOISTURE RESISTANT GYPSUM BOARD IN THE FOLLOWING LOCATIONS: WOMEN # 125, MEN # 124, JANITOR CLOSET # 122 AND PORTIONS OF WALL WITH KEYNOTE #1 AND #2.
- WALL BASE TO BE INSTALLED ON GYPSUM WALLS AND CASEWORK ONLY.
- ALL CEILING/SOFFITS TO BE PAINTED COLOR P1.
- PAINT EXTERIOR HOLLOW METAL DOORS AND FRAMES, AND WINDOW FRAMES USE TWO COATS OF LATEX ENAMEL (SATIN) PRO-MAR 200 (INTERIOR) OR PRO-MAR 100 (EXTERIOR), MANUFACTURED BY SHERWIN WILLIAMS OR EQUAL. PROVIDE FOR TWO COLORS (ONE INTERIOR, ONE EXTERIOR), INTERIOR COLOR: P1; EXTERIOR COLOR: P8.
- PAINT ALL STEEL LINTELS, JAMBS, HEAD CONDITIONS, ETC. COLOR: INTERIOR P1; EXTERIOR: P4.
- PROVIDE TRANSITION STRIPS AT ALL CHANGES IN FLOOR MATERIAL. TRANSITION STRIPS TO BE OF MATERIAL APPROPRIATE TO ADJOINING MATERIALS. SEE KEY NOTES: #3, 4, 6, AND 7.

KEY NOTES:

- USE MOISTURE RESISTANT GYPSUM BOARD ON WALLS SURROUNDING SINK AT COFFEE BAR COUNTER.
- USE MOISTURE RESISTANT GYPSUM BOARD ON WALLS SURROUNDING SINK AT COUNTER.
- INSTALL TRANSITION STRIPS AT INTERSECTION OF DIFFERENT FLOORING MATERIALS (PORCELAIN TILE TO CARPET); SCHLUTER STRIP SCHEME IN SATIN ANODIZED ALUMINUM, SIZE AS APPROPRIATE FOR MATERIAL THICKNESS.
- INSTALL TRANSITION STRIPS AT INTERSECTION OF DIFFERENT FLOORING MATERIALS (PORCELAIN TILE TO RUBBER ATHLETIC FLOORING); SCHLUTER STRIP SCHEME IN SATIN ANODIZED ALUMINUM, SIZE AS APPROPRIATE FOR MATERIAL THICKNESS.
- NOT USED.
- INSTALL TRANSITION STRIPS AT INTERSECTION OF DIFFERENT FLOORING MATERIALS (PORCELAIN TILE TO LVT); SCHLUTER STRIP RENO-U IN STAIN ANODIZED ALUMINUM, SIZE AS APPROPRIATE FOR MATERIAL THICKNESS.
- INSTALL TRANSITION STRIPS AT INTERSECTION OF DIFFERENT FLOORING MATERIALS (PORCELAIN TILE TO CONCRETE); SCHLUTER STRIP RENO-U IN STAIN ANODIZED ALUMINUM, SIZE AS APPROPRIATE FOR MATERIAL THICKNESS.
- CHAIR RAIL, SEE DETAIL 1/4.10.
- PREPARE PORTION OF WALL FOR DRYWALL ARTIST'S RELIEF LANDSCAPE MURAL ON WALL/SOFFIT ABOVE PAINTING SUBCONTRACTOR TO PAINT OVER FINISHED ARTWORK, COLOR P1.
- ALIGN.



1 TRIM DETAIL
SCALE: 3/8" = 1'-0"



2 CARPET TILE PATTERN
SCALE: 3/8" = 1'-0"