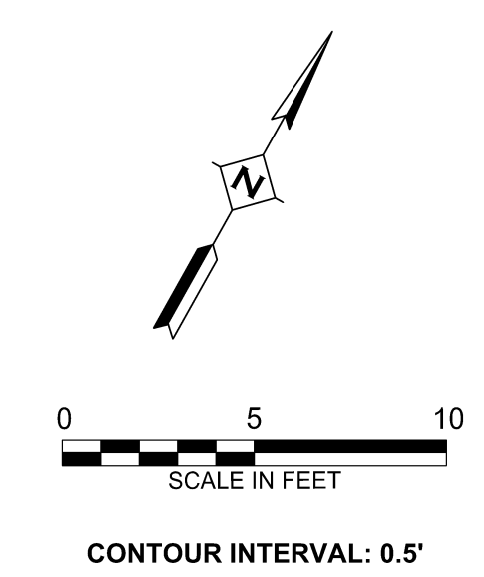
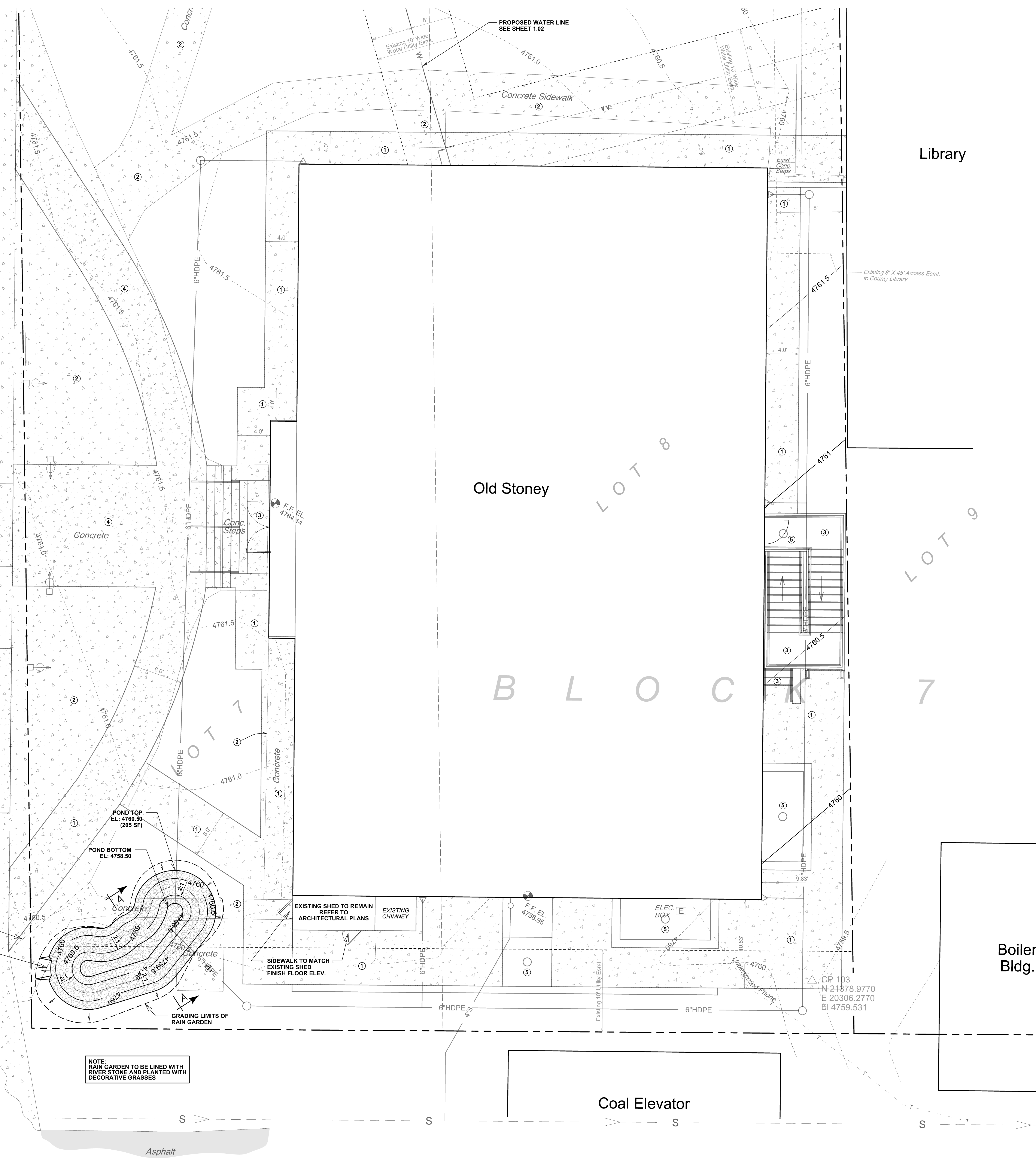
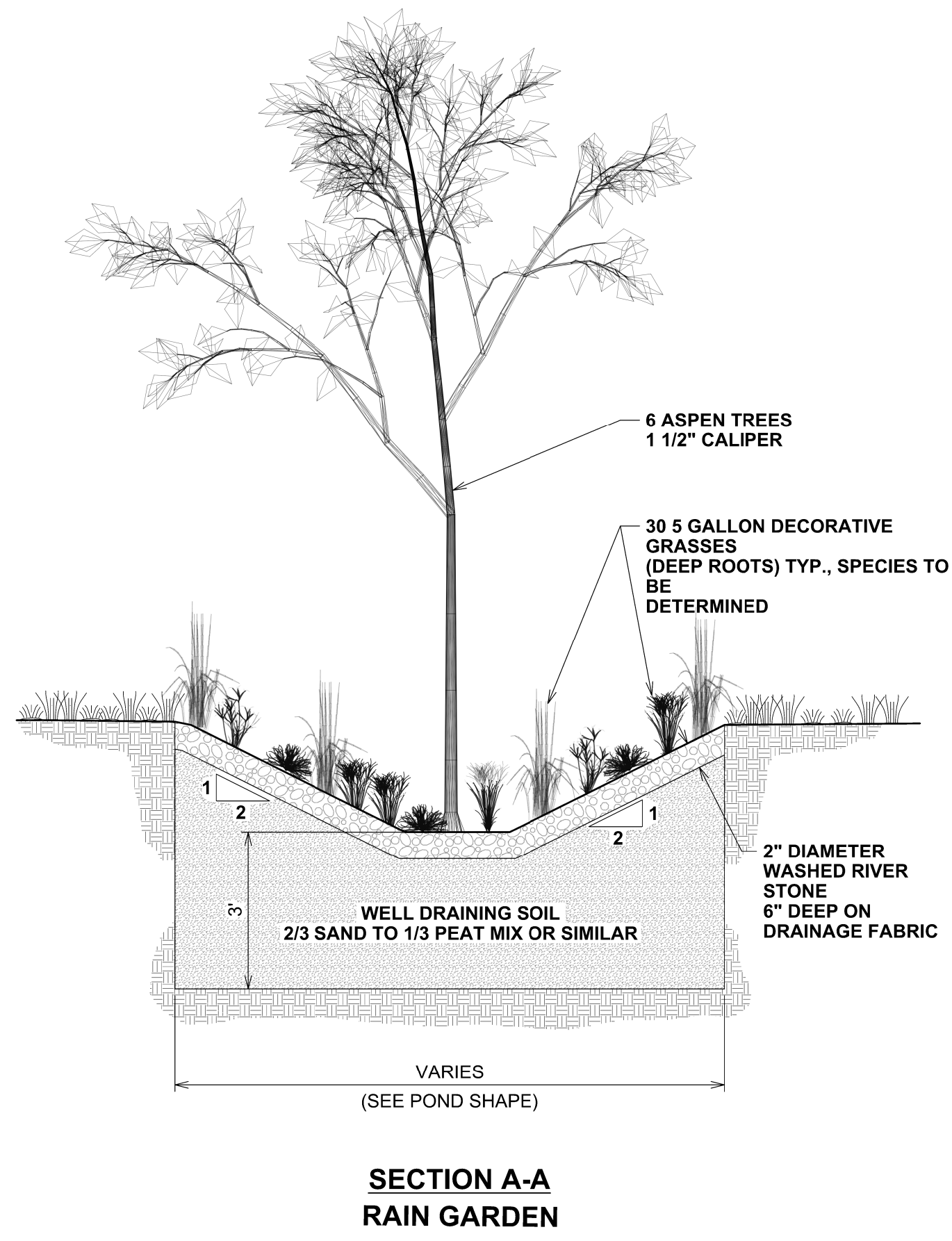


N. Fourth Street
(Asphalt Surfacing)

Conc. Curb & Gutter



- KEYNOTES**
- ① PROPOSED CONCRETE REFER TO ARCHITECTURAL PLANS
 - ② CONCRETE REMOVAL REFER TO ARCHITECTURAL PLANS
 - ③ PROPOSED STAIRS / RAMP REFER TO ARCHITECTURAL PLANS
 - ④ CONCRETE REMOVAL AND REPLACEMENT REFER TO ARCHITECTURAL PLANS
 - ⑤ BORE FOR DRYWELL REFER TO ARCHITECTURAL PLANS

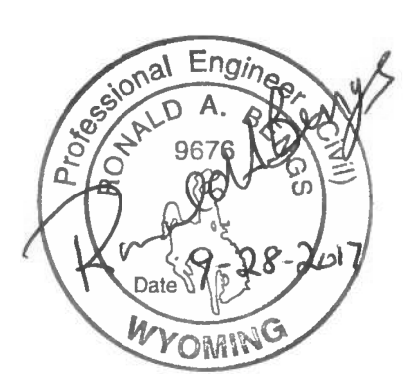


LEGEND	
	CONTROL POINT
	ELECTRICAL BOX
	FIRE HYDRANT
	SANITARY SEWER MANHOLE
	ASPHALT SURFACE
	CONCRETE SURFACE
	INTERIOR PROPERTY LINE
	PROPERTY BOUNDARY
	TELEPHONE LINE
	WATER LINE
	SANITARY SEWER LINE
	CONTOUR MINOR - EXISTING
	CONTOUR MAJOR - EXISTING
	CONTOUR MINOR - PROPOSED
	CONTOUR MAJOR - PROPOSED

PROJECT NO. 16-16-092.01

Interstate Engineering, Inc.
315 Main Street
Sundance, WY 82430
PH: (307) 283-3275
www.interstateeng.com

INTERSTATE ENGINEERING
Professionals you need, people you trust.



OLD STONEY REMODEL
PHASE ONE
108 NORTH 4TH STREET
SUNDANCE WY, 82729

Stataline No. 7 ARCHITECTS

108 North 4th Street
Sundance, WY 82729
PH: (307) 283-3275
www.stataline.com

© 2017 Stataline No. 7 Architects, Inc. All Rights Reserved. This drawing is the property of Stataline No. 7 Architects, Inc. and is not to be reproduced, stored in a retrieval system, or transmitted in any form or by any means, electronic, mechanical, photocopying, recording, or by any information storage and retrieval system, without the prior written permission of Stataline No. 7 Architects, Inc. (COP 000007)

PROJECT NUMBER
16-022

DATE
11/20/2017

DRAWN BY
CLG / CDK

DISK ID.

SHEET TITLE
GRADING PLAN

SHEET NUMBER

1.01