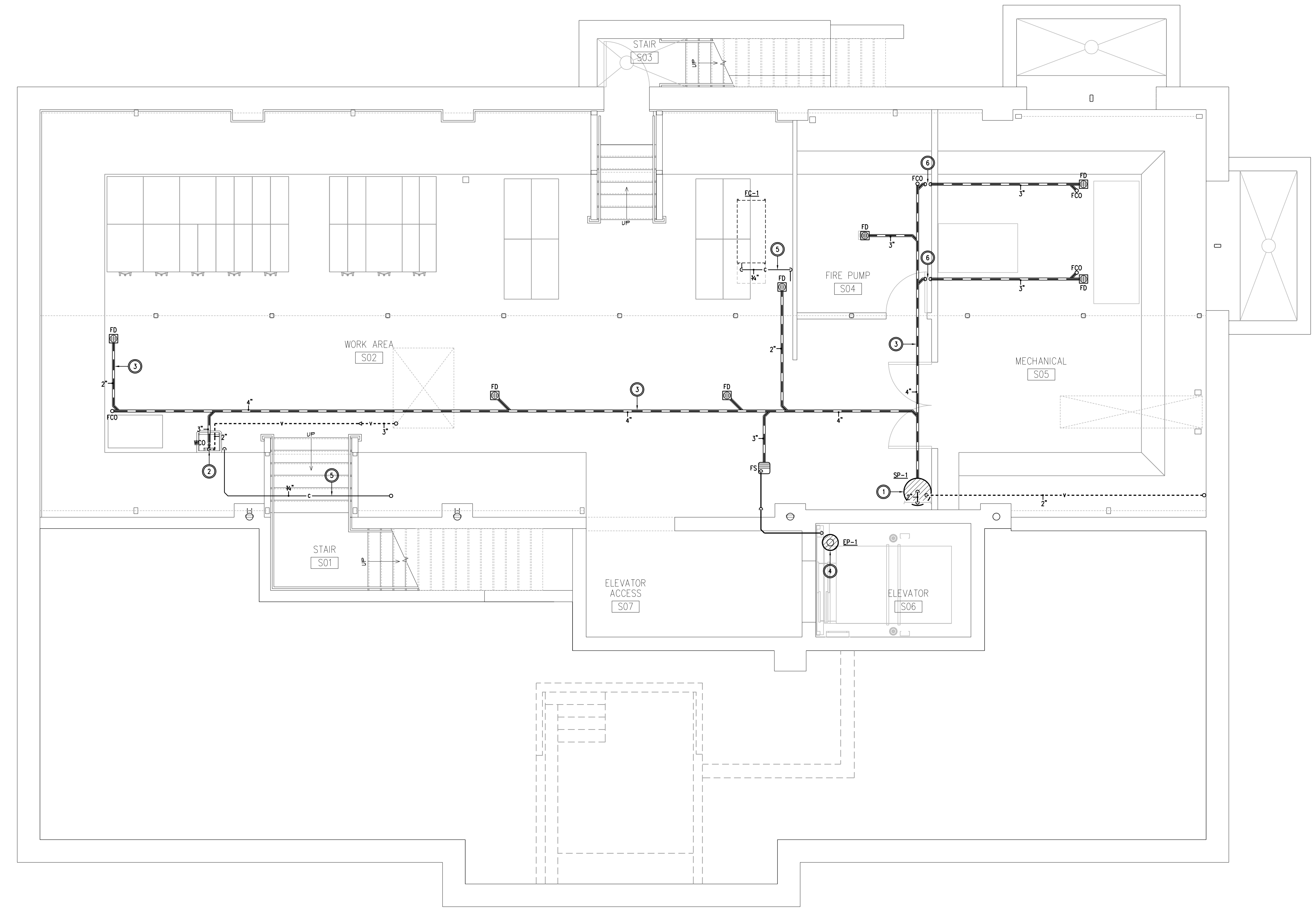


GENERAL NOTES

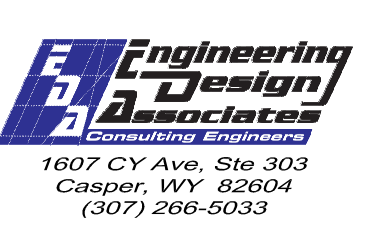
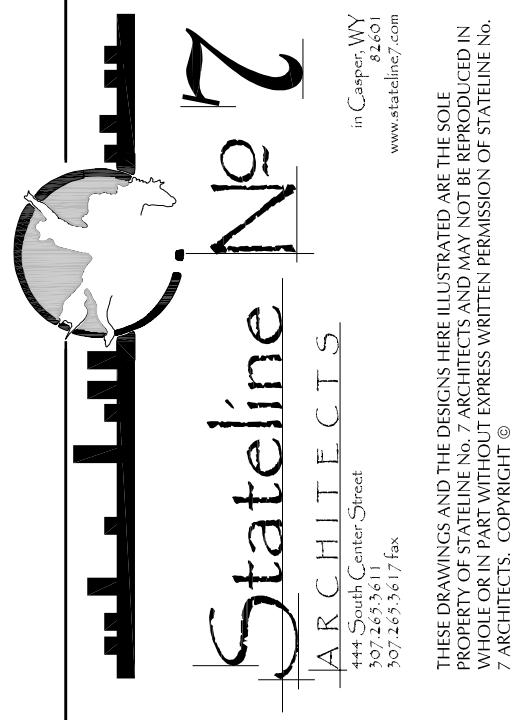
1. CONTRACTORS ARE TO EXAMINE THE SITE AND DOCUMENTS OF OTHER TRADES, AND BECOME FAMILIAR WITH THE FULL SCOPE OF WORK.
2. INSTALL ALL PLUMBING PIPING WITHIN FRAMED WALLS UNLESS NOTED OTHERWISE. COORDINATE LOCATIONS AND REQUIREMENTS WITH OTHER TRADES PRIOR TO FABRICATION OF MATERIALS.
3. FLOOR DRAIN LOCATIONS ARE SHOWN APPROXIMATE. CONFIRM ALL LOCATIONS WITH ARCHITECT PRIOR TO ROUGH-IN AND SET FINAL ELEVATION TO ACCOMMODATE SLOPING FLOORS.
4. COORDINATE ALL BELOW GROUND INSTALLATION WITH FOUNDATION WORK. PROVIDE SLEEVES OR BLOCK-OUTS WHERE REQ'D. CONSULT ARCHITECT PRIOR TO DISRUPTING ANY STRUCTURAL ELEMENTS.
5. ALL WASTE PIPING AND VENT PIPING SHALL BE CAST IRON (LNU).
6. COORDINATE ALL FLOOR SINKS AND FLOOR DRAINS WITH EXISTING STRUCTURE AND FIELD LOCATE BETWEEN JOIST AS REQ'D TO NOT INTERFERE WITH THE EXISTING STRUCTURE.
7. PROVIDE RECTORSERL MODEL SSS SAFETY SWITCH HIGH WATER CONDENSATE ALARM TO SHUT FAN COOL UNIT OFF IN CONDENSATE LINE. INSTALL PER MFG.

KEYED NOTES

1. INSTALL NEW WASTE WATER BASIN AND PUMP TO SERVE THE SUB-BASEMENT LEVEL SINKS AND FLOOR DRAINS. COORDINATE EXIST ELEVATION LEVEL OF THE BASIN WITH NEW WASTE PIPING. INSTALL NEW ISOLATION VALVE, CHECK VALVE, AND PUMP. CONNECT DISCHARGE PIPE ONTO WASTE PIPE ABOVE.
2. ROUTE EXPOSED 2" WASTE AND VENT PIPE BEHIND LAUNDRY TUB AS REQ'D. SECURE WITH UNISTRUT AND CLAMPS. PROVIDE SOLETS INTERCEPTOR NET TO THE SINK FOR THE DRAIN LINE FOR MAXIMUM ACCESSIBILITY. ROUTE CONDENSATE DRAIN INTO BRANCH TAIL PIECE UNDER THE SINK BEFORE THE INTERCEPTOR.
3. INSTALL UNDERGROUND PIPING AS SHOWN IN THE SUB-BASEMENT FLOOR. MAINTAIN 1/4" PER FT SLOPE MINIMUM BACK TO SUMP PUMP.
4. EXTEND ELEVATOR SUMP PUMP DISCHARGE TO FLOOR SINK IN THE OTHER ROOM.
5. COMBINE CONDENSATE DRAINS UP AS HIGH AS POSSIBLE. SLOPE ACCORDINGLY TO BRANCH TAIL PIECE OF FITTURE AS SHOWN ON NEAREST FLOOR DRAIN.
6. PROVIDE A RUNNING TRAP CONFIGURATION FOR THE FLOOR DRAINS THAT SERVE THE MECHANICAL ROOM TO PROTECT THE P-TRAPS FROM FREEZING.



**OLD STONEY REMODEL
PHASE ONE
108 NORTH 4TH STREET
SUNDANCE WY, 82729**



PROJECT NUMBER
16-022 / 17040

DATE
11/20/2017

DRAWN BY
AE/KRD

DISK ID.

SHEET TITLE
PHASE 1
SUB-BASEMENT
FLOOR PLAN -
WASTE & VENT

SHEET NUMBER
15.10