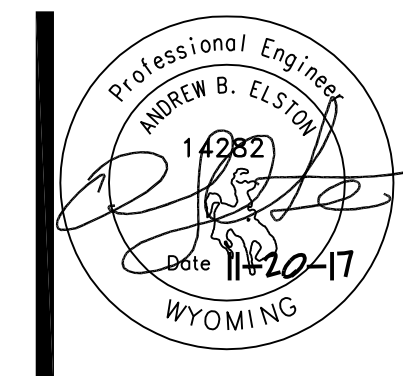


GENERAL NOTES

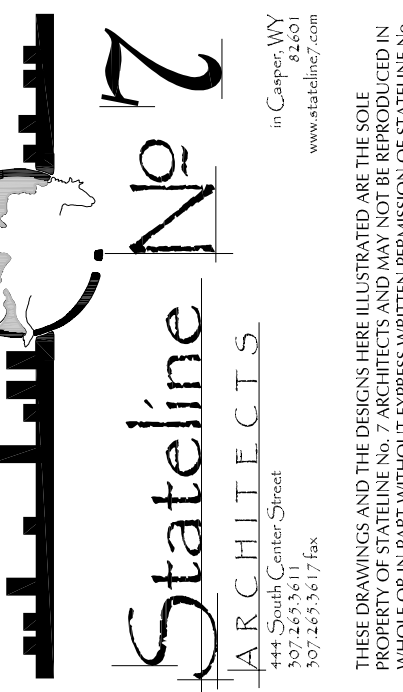
1. CONTRACTORS ARE TO EXAMINE THE SITE AND DOCUMENTS OF OTHER TRADES, AND BECOME FAMILIAR WITH THE FULL SCOPE OF WORK.
2. INSTALL ALL PLUMBING PIPING WITHIN FRAMED WALLS UNLESS NOTED OTHERWISE. COORDINATE LOCATIONS AND REQUIREMENTS WITH OTHER TRADES PRIOR TO FABRICATION OF MATERIALS.
3. FLOOR DRAIN LOCATIONS ARE SHOWN APPROXIMATE. CONFIRM ALL LOCATIONS WITH ARCHITECT PRIOR TO ROUGH-IN AND SET FINAL ELEVATION TO ACCOMMODATE SLOPING FLOORS.
4. COORDINATE ALL BELOW GROUND INSTALLATION WITH FOUNDATION WORK. PROVIDE SLEEVES OR BLOCK-OUTS WHERE REQ'D. CONSULT ARCHITECT PRIOR TO DISRUPTING ANY STRUCTURAL ELEMENTS.
5. ALL WASTE PIPING AND VENT PIPING SHALL BE CAST IRON (LNU).
6. COORDINATE ALL FLOOR SINKS AND FLOOR DRAINS WITH EXISTING STRUCTURE AND FIELD LOCATE BETWEEN JOIST AS REQ'D TO NOT INTERFERE WITH THE EXISTING STRUCTURE.
7. PROVIDE RECTORSERIAL MODEL SSS SAFETY-SWITCH HIGH WATER CONDENSATE ALARM TO SHUT FAN COOL UNIT OFF IN CONDENSATE LINE INSTALL PER A/R/C.

KEYED NOTES

1. BUILDING WASTE INVERT IS APPROXIMATELY 3'-0" BELOW THE BASEMENT FLOOR LEVEL. PROVIDE A SLEEVE AND LINK SEAL THRU THE FOUNDATION WALL, EXTENDING THE BUILDING. SLOPE ALL DRAINAGE AT 1/4" PER FT. MINIMUM. COORDINATE LOCATION WITH CIVIL DRAWINGS.
2. OFFSET AND EXTEND 2" SANITARY WASTE PIPING UP IN WALL FRAMING. SEE FIRST FLOOR AND SUB-BASEMENT PLANS FOR CONTINUATION.
3. OFFSET AND EXTEND 2" SANITARY WASTE PIPING UP IN WALL FRAMING. SEE FIRST FLOOR AND SUB-BASEMENT PLANS FOR CONTINUATION.
4. OFFSET AND EXTEND 2" SANITARY VENT PIPING UP IN CHASE. SEE FIRST FLOOR AND SUB-BASEMENT PLANS FOR CONTINUATION.
5. ROUTE PIPING IN SUB-BASEMENT ALONG THIS BEAM TO PROVIDE MAXIMUM HEAD HEIGHT AND WORKING SPACE.
6. INSTALL 1/2" SANITARY VENT LINE AND 4" SANITARY WASTE LINE UP IN WALL FRAMING AND OR CHASE AS REQ'D. SEE FIRST FLOOR AND SUB-BASEMENT PLANS FOR CONTINUATION.
7. COMBINE CONDENSATE DRAINS IN THE CEILING SPACE AND SLOPE ACCORDINGLY TO BRANCH TAIL REECE OF FUTURE AS SHOWN.
8. COMBINE CONDENSATE DRAINS AS HIGH AS POSSIBLE UP IN THE CEILING SPACE AND SLOPE ACCORDINGLY TO THE SUB-BASEMENT LEVEL. SEE SUB-BASEMENT PLANS FOR CONTINUATION.
9. INSTALL INSULATION ON THE MAIN SANITARY SEWER LINE THRU THE ENTIRE MECHANICAL ROOM TO PROTECT AGAINST THE TEMPERATURE OF THE ROOM.



**OLD STONEY REMODEL
PHASE ONE
108 NORTH 4TH STREET
SUNDANCE WY, 82729**



PROJECT NUMBER
16-022 / 17040

DATE
11/20/2017

DRAWN BY
AE/KRD

DISK ID.

SHEET TITLE
PHASE 1
BASEMENT
FLOOR PLAN -
WASTE & VENT

SHEET NUMBER

15.11