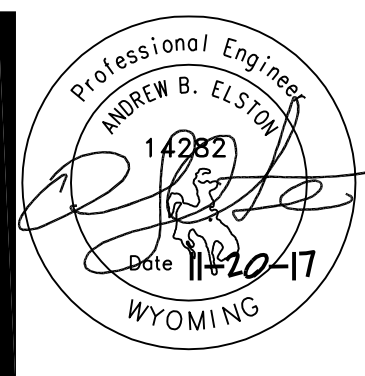


**GENERAL NOTES**

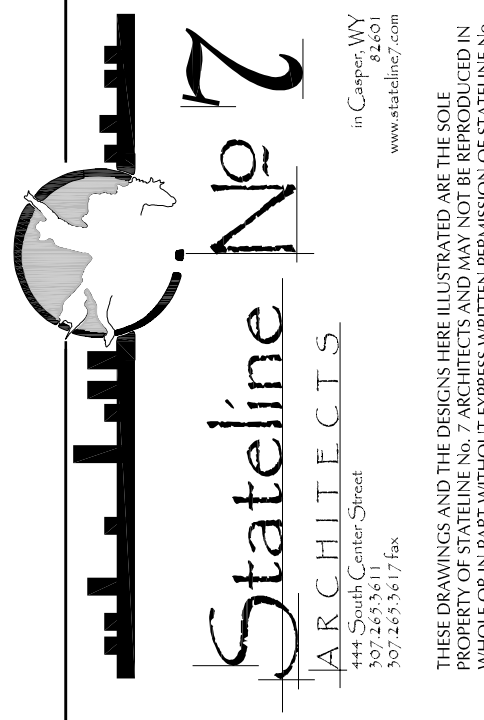
1. CONTRACTORS ARE TO EXAMINE THE SITE AND DOCUMENTS OF OTHER TRADES, AND BECOME FAMILIAR WITH THE FULL SCOPE OF WORK.
2. INSTALL ALL PLUMBING PIPING WITHIN FRAMED WALLS UNLESS NOTED OTHERWISE. COORDINATE LOCATIONS AND REQUIREMENTS WITH OTHER TRADES PRIOR TO FABRICATION OF MATERIALS.
3. FLOOR DRAIN LOCATIONS ARE SHOWN APPROXIMATE. CONFIRM ALL LOCATIONS WITH ARCHITECT PRIOR TO ROUGH-IN AND SET FINAL ELEVATION TO ACCOMMODATE SLOPING FLOORS.
4. COORDINATE ALL BELOW GROUND INSTALLATION WITH FOUNDATION WORK. PROVIDE SLEEVES OR BLOCKOUTS WHERE REQ'D. CONSULT ARCHITECT PRIOR TO DISRUPTING ANY STRUCTURAL ELEMENTS.
5. ALL WASTE PIPING AND VENT PIPING SHALL BE CAST IRON (LNU).
6. COORDINATE ALL FLOOR SINKS AND FLOOR DRAINS WITH EXISTING STRUCTURE AND FIELD LOCATE BETWEEN JOIST AS REQ'D TO NOT INTERFERE WITH THE EXISTING STRUCTURE.
7. PROVIDE RECTORSERIAL MODEL SSS SAFETY SWITCH HIGH WATER CONDENSATE ALARM TO SHUT FAN COOL UNIT OFF IN CONDENSATE LINE. INSTALL PER A/E/R.

**KEYED NOTES**

1. INSTALL 2" SANITARY VENT LINE AND 4" SANITARY WASTE LINE UP IN WALL FRAMING AND OR CHASE AS REQ'D. SEE SECOND FLOOR AND BASEMENT PLANS FOR CONTINUATION.
2. OFFSET AND EXTEND 4" SANITARY VENT LINE UP IN CHASE. SEE SECOND FLOOR AND BASEMENT PLANS FOR CONTINUATION.
3. OFFSET AND EXTEND 2" SANITARY VENT PIPING UP IN WALL FRAMING. SEE SECOND FLOOR AND BASEMENT PLANS FOR CONTINUATION.
4. OFFSET 2" STACK FROM BELOW INTO 2x2" STACKS IN WALL FRAMING AS SHOWN FOR FUTURE KITCHEN EQUIPMENT ABOVE. SEE SECOND FLOOR AND BASEMENT PLANS FOR CONTINUATION.
5. COMBINE CONDENSATE DRAINS AS HIGH AS POSSIBLE UP IN THE CEILING SPACE AND SLOPE ACCORDINGLY TO THE BASEMENT LEVEL. SEE BASEMENT PLANS FOR CONTINUATION.



**OLD STONEY REMODEL  
PHASE ONE  
108 NORTH 4TH STREET  
SUNDANCE WY, 82729**



**PROJECT NUMBER**  
16-022 / 17040

**DATE**  
11/20/2017

**DRAWN BY**  
AE/KRD

**DISK ID.**

**SHEET TITLE**  
PHASE 1  
FIRST  
FLOOR PLAN -  
WASTE & VENT

**SHEET NUMBER**

**15.12**