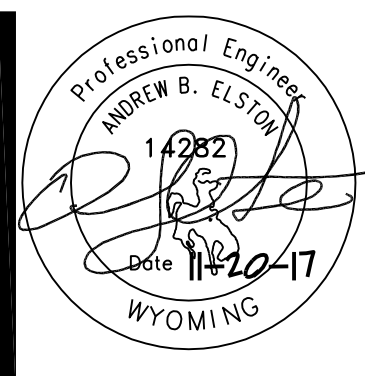


GENERAL NOTES

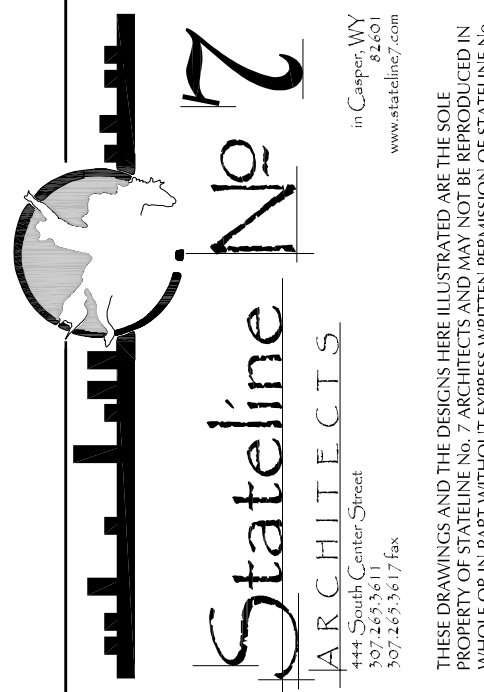
1. CONTRACTORS ARE TO EXAMINE THE SITE AND DOCUMENTS OF OTHER TRADES, AND BECOME FAMILIAR WITH THE FULL SCOPE OF WORK.
2. INSTALL ALL PLUMBING PIPING WITHIN FRAMED WALLS UNLESS NOTED OTHERWISE. COORDINATE LOCATIONS AND REQUIREMENTS WITH OTHER TRADES PRIOR TO FABRICATION OF MATERIALS.
3. FLOOR DRAIN LOCATIONS ARE SHOWN APPROXIMATE. CONFIRM ALL LOCATIONS WITH ARCHITECT PRIOR TO ROUGH-IN AND SET FINAL ELEVATION TO ACCOMMODATE SLOPING FLOORS.
4. COORDINATE ALL BELOW GROUND INSTALLATION WITH FOUNDATION WORK. PROVIDE SLEEVES OR BLOCKOUTS WHERE REQ'D. CONSULT ARCHITECT PRIOR TO DISRUPTING ANY STRUCTURAL ELEMENTS.
5. ALL WASTE PIPING AND VENT PIPING SHALL BE CAST IRON (LINO).
6. COORDINATE ALL FLOOR SINKS AND FLOOR DRAINS WITH EXISTING STRUCTURE AND FIELD LOCATE BETWEEN JOIST AS REQ'D TO NOT INTERFERE WITH THE EXISTING STRUCTURE.
7. ALL PLUMBING ON THIS LEVEL TO BE ROUGHED-IN ONLY (BASE BID). FIXTURE LABELS SHOWN FOR ROUGH-IN SINKS ONLY. TRIM OUT TO BE ALTERNATE #1.
8. PROVIDE RECTORSERIAL MODEL, SSS SAFETY SWITCH HIGH WATER CONDENSATE ALARM TO SHUT FAN COOL UNIT OFF IN CONDENSATE LINE INSTALL PER MFG.

KEYED NOTES

1. VERIFY JOIST LAYOUT PRIOR TO DRILLING ANY HOLES FOR PLUMBING ROUGH-IN AND WALL LOCATIONS.
2. INSTALL ALL WASTE PIPING WITHIN JOIST SPACING. MAINTAIN MINIMUM SLOPE ON PIPE BACK TO MARKS, (TYPICAL).
3. INSTALL 2" SANITARY VENT LINE AND 4" SANITARY WASTE LINE UP IN CHASE TO SERVE THIS LEVEL.
4. INSTALL 2" SANITARY WASTE LINE UP IN WALL CAVITY TO SERVE THIS LEVEL.
5. COMBINE VENTS IN THE ATTIC SPACE AS SHOWN EXTEND 4" SANITARY VENT UP THRU ROOF.
6. COMBINE CONDENSATE DRAINS IN THE ATTIC SPACE AND SLOPE ACCORDINGLY TO BRANCH TAIL PIECE OF FUTURE AS SHOWN. PROTECT CONDENSATE LINES FROM FREEZING IN THE ATTIC WITH INSULATION.



OLD STONEY REMODEL
 PHASE ONE
 108 NORTH 4TH STREET
 SUNDANCE WY, 82729



PROJECT NUMBER
 16-022 / 17040

DATE
 11/20/2017

DRAWN BY
 AE/KRD

DISK ID.

SHEET TITLE
 PHASE 1
 SECOND
 FLOOR PLAN -
 WASTE & VENT

SHEET NUMBER

15.13

