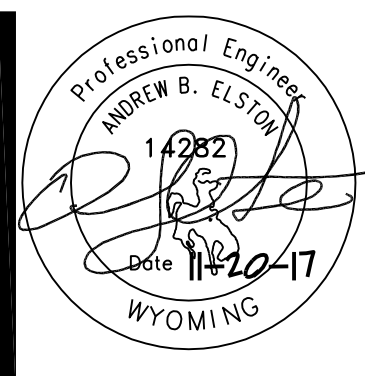


GENERAL NOTES

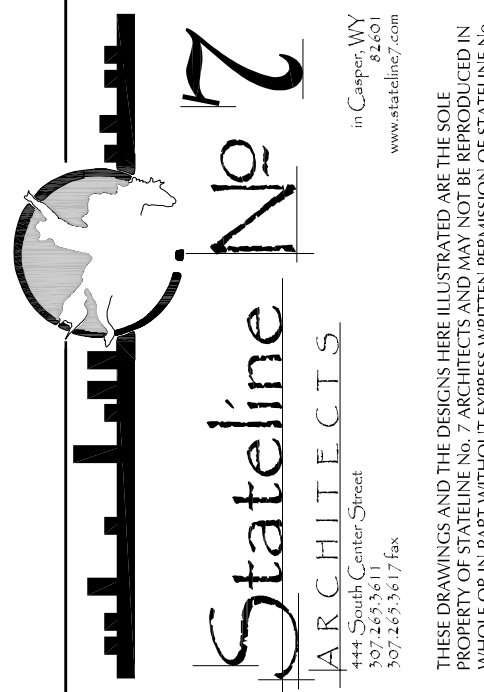
1. CONTRACTORS ARE TO EXAMINE THIS SITE AND DOCUMENTS OF OTHER TRADES, AND BECOME FAMILIAR WITH THE FULL SCOPE OF WORK.
2. INSTALL ALL PLUMBING WITHIN FRAMED WALLS, CHASES, OR TIGHT TO STRUCTURE UNLESS NOTED OTHERWISE. NO WATER PIPING UP IN THE ATTIC SPACE.
3. COORDINATE LOCATIONS AND REQUIREMENTS WITH OTHER TRADES PRIOR TO FABRICATION OF MATERIALS. PLAN OFFSETS AS REQUIRED TO AVOID CONFLICTS WITH DUCTWORK AND STRUCTURE.
4. PROVIDE FIRE CALKING AS REQUIRED AROUND ALL PENETRATIONS IN AND OUT OF THE CHASE.

KEYED NOTES

1. INSTALL NEW WALL HYDRANT IN THE SAME LOCATION OF EXISTING WALL HYDRANT. PROVIDE A FLUSH LOCATION FOR THE HYDRANT FLANGE TO SET AGAINST.
2. PROVIDE A 1" YARD IRRIGATION TAP IN THIS LOCATION. YARD IRRIGATION SYSTEM IS BY OTHERS AND ARCHITECT.
3. COORDINATE ACCESS WITH ALL BALL VALVES WITH AN ACCESS DOOR IN THE CEILING PRIOR TO ROUGH-IN WITH ARCHITECT.
4. INSTALL DOMESTIC WATER LINES UP IN WALL FRAMING ABOVE UP IN 2 HOUR CHASE. SEAL PENETRATION AS REQUIRED. SEE FIRST FLOOR OF CONTINUATION.
5. INSTALL DOMESTIC WATER LINES DOWN IN 2 HOUR CHASE TO BELOW. SEAL PENETRATION AS REQUIRED. SEE SUB-BASEMENT FOR CONTINUATION.
6. INSTALL ELECTRIC WATER HEATER AND PUM IN THIS LOCATION PIPE DRAIN PAN TO FLOOR DRAIN WITH PVC IN A NEAT AND ORDERLY FASHION.
7. INSTALL 2" ON LINE IN WALL FRAMING TO SERVE FIXTURES IN BOTH BATHROOMS. DISTRIBUTE ACCORDINGLY FROM THE 2" HEADER.
8. PROVIDE ACCESS DOOR AND SHUT OFF VALVE IN THE WALL FOR ACCESS TO THE SHOCK ARRESTER IN THE MENS BATHROOM. PROVIDE ACCESS DOOR ABOVE THE TILE 8'-4" TO THE BOTTOM.



**OLD STONEY REMODEL
PHASE ONE
108 NORTH 4TH STREET
SUNDANCE WY, 82729**



PROJECT NUMBER
16-022 / 17040

DATE
11/20/2017

DRAWN BY
AE/KRD

DISK ID.

SHEET TITLE
PHASE 1
BASEMENT
FLOOR PLAN -
DOMESTIC PIPING

SHEET NUMBER

15.21