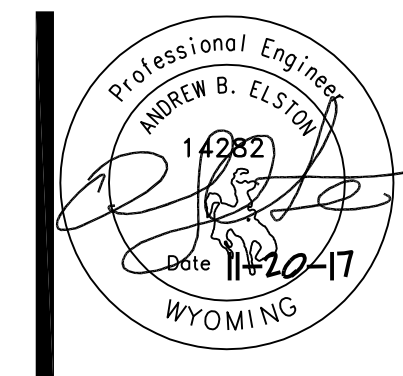


GENERAL NOTES

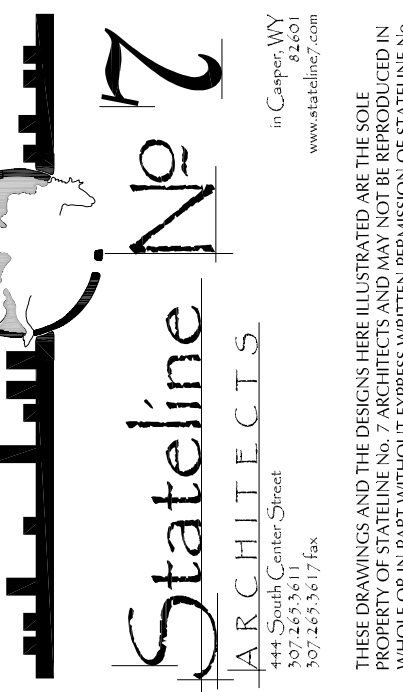
1. CONTRACTORS ARE TO EXAMINE THE SITE AND DOCUMENTS OF OTHER TRADES, AND BECOME FAMILIAR WITH THE FULL SCOPE OF WORK.
2. INSTALL ALL DUCTWORK TIGHT TO OR WITHIN STRUCTURE ABOVE WHERE POSSIBLE. COORDINATE LOCATIONS AND REQUIREMENTS WITH OTHER TRADES PRIOR TO FABRICATION OF MATERIALS. DUCTWORK SHALL HAVE PRECEDENCE.
3. OFFSET AND/OR TRANSITION DUCTWORK OVER OR BENEATH STRUCTURAL ELEMENTS AS REQD. CONFIRM INTERIORS WITH THE ENGINEER PRIOR TO FABRICATION.
4. SEAL ALL PENETRATIONS THROUGH STRUCTURE WITH A FIRE SAFE MATERIAL. SEAL ALL OTHERS WITH AN ACOUSTIC CAULK. SEE ARCHITECT'S DRAWINGS TO CONFIRM CLASSIFICATION.
5. INSTALL ALL WALL MOUNT THERMOSTATS WITH DISPLAY. SET POINT ADJUSTMENT AND OCCUPANCY OVERRIDE AT 48" AFF. OR LOWER AS NECESSARY TO SATISFY AIR REQUIREMENTS.
6. AIR SENSORS LOCATIONS ARE SHOWN APPROXIMATE. CONFIRM ALL LOCATIONS WITH ARCHITECT AND COORDINATE WITH ACTUAL CONDITIONS PRIOR TO INSTALLATION.

KEYED NOTES

1. PROVIDE INTAKE AND EXHAUST LOUVER TO THE GC FOR INSTALLATION IN THE WALL AS HIGH AS POSSIBLE. SEE STRUCTURAL AND ARCHITECTURAL PLANS FOR EXACT LOCATION. FABRICATE 2" DEEP INTAKE PLenum AND 2" DEEP EXHAUST PLenum AND INSTALL DUCTIMATE MODEL M0308A MOISTURE DRAIN IN EACH PLenum BOX. WAPFOLD DRAIN TOGETHER AND PIPE TO NEAREST FLOOR DRAIN WITH PVC PIPING AND UNISTRUT.
2. PROVIDE 4" THICK CONCRETE PAD FOR ERV UNIT TO SIT ON. ROUTE DUCTS AS SHOWN. MAINTAIN ALL MFRS CLEARANCES AROUND THE UNIT. MOTORISED DAMPERS OPEN. AND MAINTAIN MINIMUM HEAD HEIGHT IN THE MECHANICAL ROOM.
3. PROVIDE 4" THICK CONCRETE PAD FOR HRU-1 AND 2. SEE DETAIL AND SECTIONS FOR DUCT LAYOUT.
4. ALL DAMPERS TO BE LINE VOLTAGE. COORDINATE WITH E.C. ON ACTUAL LOCATIONS AND CONTROLS.
5. PROVIDE REDUCE SILENT THERMOSTAT TO SENSE THE OUTDOOR AIR TEMPERATURE INSIDE THE AREA WELL. INTERLOCK CONTROL TO OPEN OUTSIDE AIR DAMPERS ON BOTH LOUVERS AND CLOSE THE RECIRCULATION DAMPERS WHEN THE OUTSIDE AIR TEMPERATURE IS ABOVE 40°F (ADU). WHEN THE OUTSIDE AIR TEMPERATURE IS BELOW 40°F (ADU) CLOSE ALL OUTSIDE AIR DAMPERS AND OPEN THE RECIRCULATION DAMPERS. COORDINATE EXACT TEMPERATURE SENSOR LOCATION IN THE INTAKE PLenum BOX WITH THE E.C.
6. INSTALL ELECTRICAL UNIT HEATERS AS HIGH AS POSSIBLE IN THE MECHANICAL ROOM. SET THERMOSTATS TO KEEP THE ROOM AT 38°F (ADU).
7. INSTALL ELECTRIC HEATER IN THE SUPPLY AIR DUCTWORK. PROVIDE WIRING TO THE ERV-1 AND DUCT STAT AS REQD FOR OPERATION OF THE HEATER. OBSERVE MFRS RECOMMENDED DISTANCES FROM THE FITTINGS.
8. INSTALL ELECTRIC UNIT HEATER HIGH UP IN THE CORNER OF THE ROOM. COORDINATE EXACT LOCATION OF THE HEATER WITH FIRE PROTECTION PUMP AND RISER.
9. INSTALL 20x14 LINED SUPPLY AND EXHAUST DUCTWORK UP IN CHASE TO SERVE ERV-2 IN THE ATTIC.
10. INSTALL 10" FRESH AIR DUCT UP IN CHASE TO THE BASEMENT LEVEL. ROUTE DUCT AS HIGH AS POSSIBLE FOR MAXIMUM HEAD ROOM.
11. INSTALL EXHAUST FAN HIGH AND TIGHT TO THE NEW STRUCTURE.
12. ROUTE BLUE DUCT SYSTEM UNDER GROUND TO SERVE THE ELEVATOR EQUIPMENT ROOM. COORDINATE EXACT LOCATION AND CONCRETE PENETRATIONS INTO THE ROOM WITH THE GC. SEE SECTION.
13. INSTALL DUCTWORK AS HIGH AS POSSIBLE IN THE ELEVATOR EQUIPMENT ROOM. COORDINATE EXACT LOCATION WITH EQUIPMENT IN THIS ROOM.
14. INSTALL TRANSFER AIR DUCT JUST BELOW THE EXISTING BEAM INTO THE WORK ROOM.
15. INSTALL 20x14 AND 24x14 LINED SUPPLY AND RETURN DUCTWORK UP IN CHASE TO SERVE THE OTHER LEVELS. HOLD DUCT UP AS HIGH AS POSSIBLE THRU THE WORKROOM.
16. INSTALL SUPPLY AIR DUCT, UNIT AND RETURN AIR DUCT UP AS HIGH AS POSSIBLE IN THE WORK ROOM.
17. MOUNT HEAT PUMP SYSTEM CONTROL MANAGER. COORDINATE LOCATION WITH THE E.C. NEMA RATED ENCLOSURE PROVIDED BY E.C. FOR DEVICES.
18. INSTALL COMBINATION DAMPER AS CLOSE AS POSSIBLE TO THE EXISTING CONCRETE WALL. PROVIDE GRILLE ACCESS. COORDINATE WITH STAIRS AND ELEVATOR EQUIPMENT.
19. INSTALL PLenum BOXES FOR EACH SYSTEM AROUND THE STRUCTURAL COLUMN IN THIS LOCATION. CREATE TWO SEPARATE BOXES AS SHOWN INTO THE LOUVER. PROVIDE A SHEET METAL SEAL COVER OVER THE COUPLED LOUVER AND SEAL WEATHER TIGHT AGAINST THE BACK OF THE LOUVER.



**OLD STONEY REMODEL
PHASE ONE
108 NORTH 4TH STREET
SUNDANCE WY, 82729**



PROJECT NUMBER
16-022 / 17040

DATE
11/20/2017

DRAWN BY
AE/KRD

DISK ID.

SHEET TITLE
PHASE 1
SUB-BASEMENT
FLOOR PLAN -
HVAC

SHEET NUMBER

15.30

