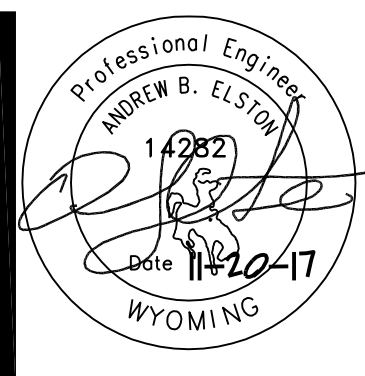
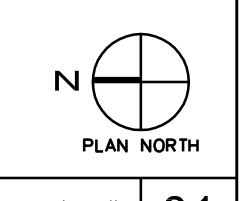
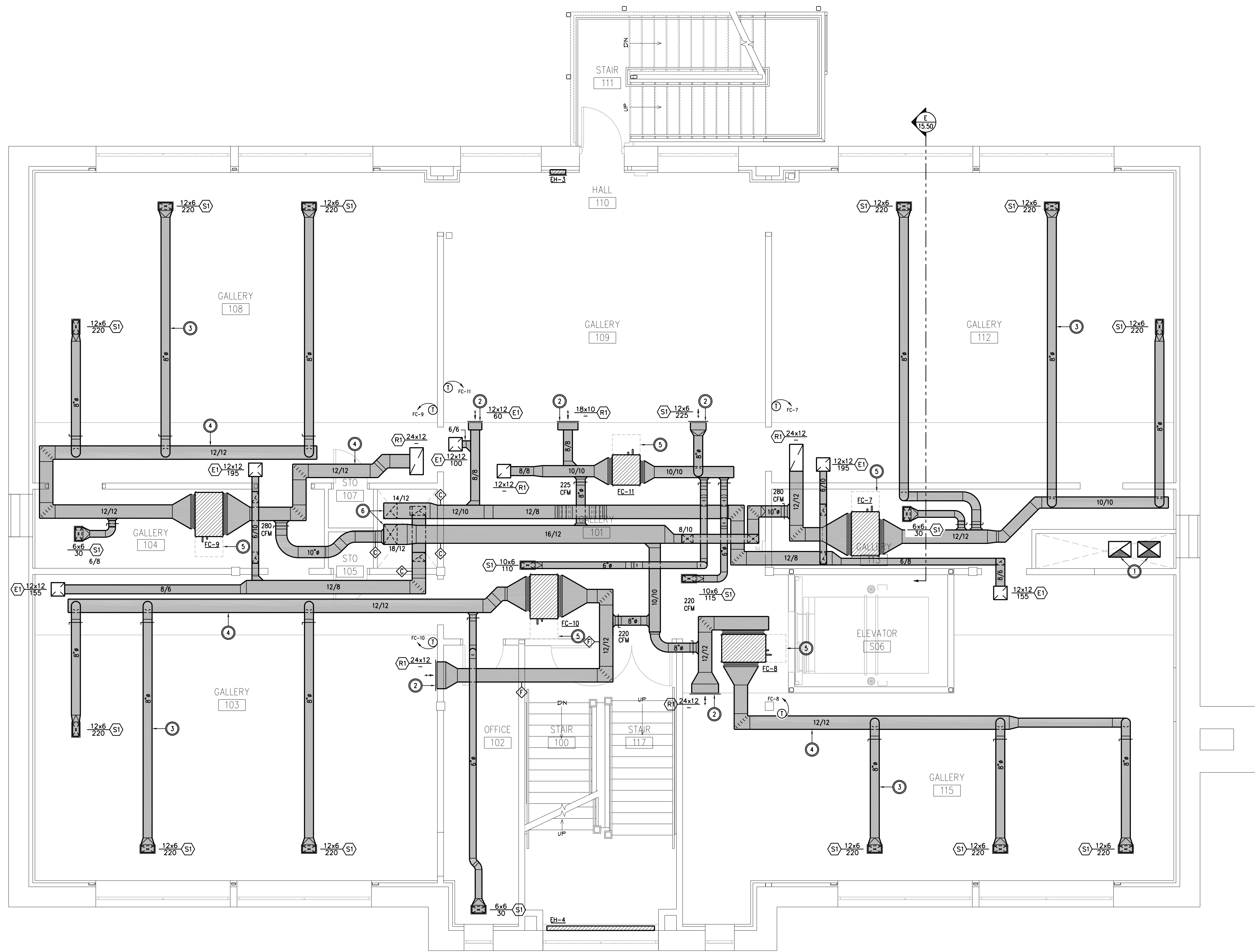


GENERAL NOTES

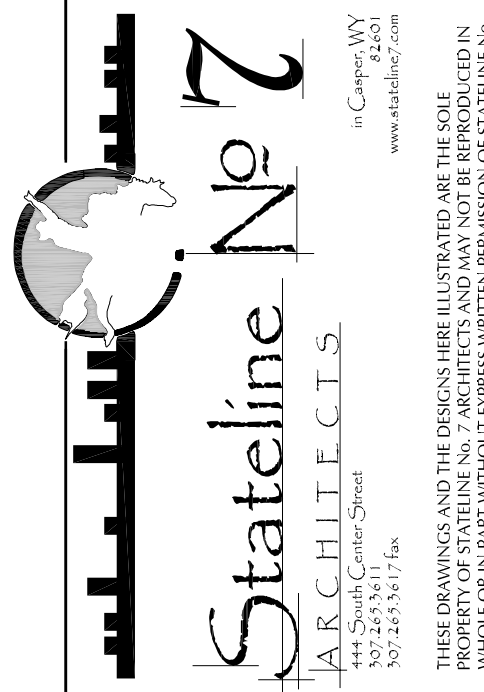
1. CONTRACTOR ARE TO EXAMINE THE SITE AND DOCUMENTS OF OTHER TRADES, AND BECOME FAMILIAR WITH THE FULL SCOPE OF WORK.
2. INSTALL ALL DUCTWORK TIGHT TO OR WITHIN STRUCTURE ABOVE WHERE POSSIBLE. COORDINATE LOCATIONS AND REQUIREMENTS WITH OTHER TRADES PRIOR TO FABRICATION OF MATERIALS. PLAN OFFSETS OR TRANSITIONS AS REQ'D TO AVOID CONFLICTS WITH STRUCTURE. DUCTWORK SHALL HAVE PRECEDENCE.
3. OFFSET AND/OR TRANSITION DUCTWORK OVER OR BENEATH STRUCTURAL ELEMENTS AS REQ'D. CONFIRM INTERFERENCES WITH THE ENGINEER PRIOR TO FABRICATION. DEMO AND EXISTING WOODEN FLOORING, FRAMING, AND BOARDS AS REQUIRED TO ROUTE DUCTWORK IN ALTERNATE #1.
4. SEAL ALL PENETRATIONS THRU RATED CONSTRUCTION WITH A FIRE SAFE MATERIAL. SEAL ALL OTHERS WITH AN ACOUSTIC CALK. SEE ARCHITECT'S DRAWINGS TO CONFIRM CLASSIFICATION.
5. INSTALL ALL WALL MOUNT THERMOSTAT WITH DELAY, SET POINT ADJUSTMENT, AND OCCUPANCY OVERRIDE AT 5' AFF. OR LOWER AS NECESSARY TO SATISFY ADA REQUIREMENTS.
6. AIR REVISIONS LOCATIONS ARE SHOWN APPROXIMATE. CONFIRM ALL LOCATIONS WITH ARCHITECT AND COORDINATE WITH ACTUAL CONDITIONS PRIOR TO INSTALLATION.

KEYED NOTES

1. INSTALL 20"X14" LINED DUCTWORK UP IN CHASE TO SERVE ERV IN THE ATTIC.
2. INSTALL AIR GRILLE UP AS HIGH AS POSSIBLE IN THE ROOM SERVED. COORDINATE EXACT LOCATION WITH FRAMING AND GC PRIOR TO INSTALLATION.
3. OFFSET DUCTS AS SHOWN, UP WITHIN JOIST SPACE. SEE ARCHITECTURAL RCP FOR EXACT CEILING HEIGHTS. REPLACE & BRACE IN THE DUCT WITH HORIZONTAL BRACKS. CONFIRM WITH STRUCTURAL ENGINEER PRIOR TO INSTALLATION.
4. INSTALL HORIZONTAL DUCTS IN SOFFIT AS REQ'D. SEE ARCHITECTURAL RCP FOR EXACT SIZE AND LOCATION OF THIS SOFFIT.
5. INSTALL FAN COIL UNITS TIGHT TO STRUCTURE. PROVIDE MFGOR CLEARANCES AROUND EACH UNIT. COORDINATE ALL ACCESS DOORS AND SEE WITH CEILING FRAMING.
6. ROUTE 14"X12" AND 18"X12" LINED SUPPLY AND RETURN DUCTWORK DOWN IN THE CHASE TO SERVE THE BASEMENT LEVEL.



**OLD STONEY REMODEL
PHASE ONE
108 NORTH 4TH STREET
SUNDANCE WY, 82729**



PROJECT NUMBER
16-022 / 17040

DATE
11/20/2017

DRAWN BY
AE/KRD

DISK ID.

SHEET TITLE
PHASE 1
FIRST
FLOOR PLAN -
HVAC

SHEET NUMBER

15.32