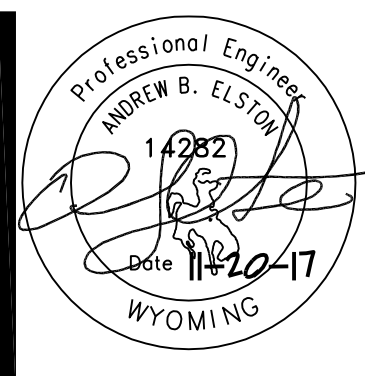


GENERAL NOTES

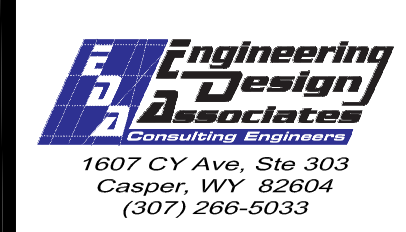
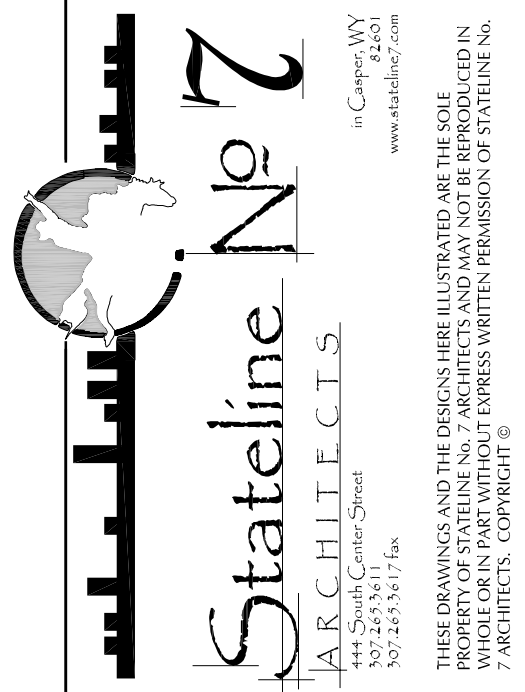
1. INSTALL ALL HORIZONTAL REFRIGERANT PIPING UP IN WALL FRAMING FROM BELOW TO SERVE THE 2ND LEVEL. (BASE BID).
2. INSTALL REFRIGERANT PIPING UP IN WALL FRAMING FROM BELOW TO SERVE THE BASEMENT AND CONTINUE UP TO SERVE THE 1ST LEVEL.
3. PROVIDE ACCESS DOORS AS SHOWN IN ALL HARD CEILING FOR ROUTINE MAINTENANCE OF ALL COMPONENTS OF THE SYSTEM.

KEYED NOTES

1. OFFSET AND ROUTE REFRIGERANT PIPING UP IN WALL FRAMING FROM BELOW TO SERVE THE 2ND LEVEL. (BASE BID).
2. INSTALL REFRIGERANT PIPING UP IN WALL FRAMING FROM BELOW TO SERVE THE BASEMENT AND CONTINUE UP TO SERVE THE 1ST LEVEL.
3. FIELD VERIFY MFG'S ACCESS INTO ALL COMPONENTS OF THE SYSTEM IN THE CEILING SPACE PRIOR TO INSTALLATION.



**OLD STONEY REMODEL
PHASE ONE
108 NORTH 4TH STREET
SUNDANCE WY, 82729**



PROJECT NUMBER
16-022 / 17040

DATE
11/20/2017

DRAWN BY
AE/KRD

DISK ID.

SHEET TITLE
PHASE 1
BASEMENT
FLOOR PLAN -
HYDRONIC PIPING

SHEET NUMBER

15.41