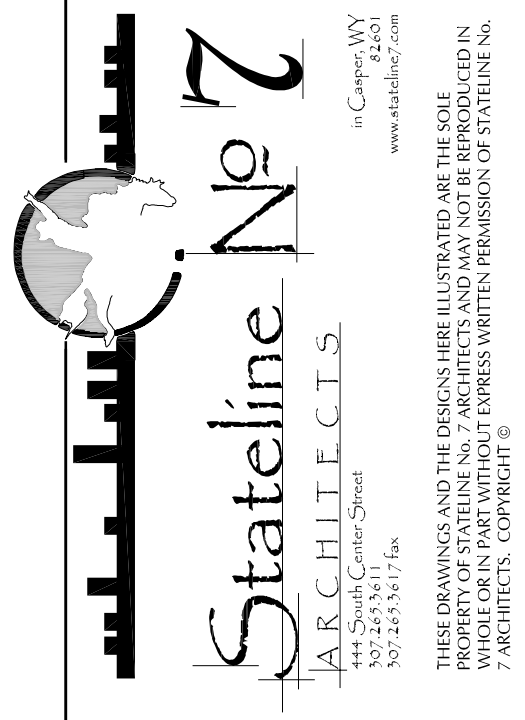


OLD STONEY REMODEL
PHASE ONE
108 NORTH 4TH STREET
SUNDANCE WY, 82729



PROJECT NUMBER
16-022 / 17040

DATE
11/20/2017

DRAWN BY
AE/KRD

DISK ID.

SHEET TITLE
FIRE PROTECTION
FLOOR PLANS

SHEET NUMBER

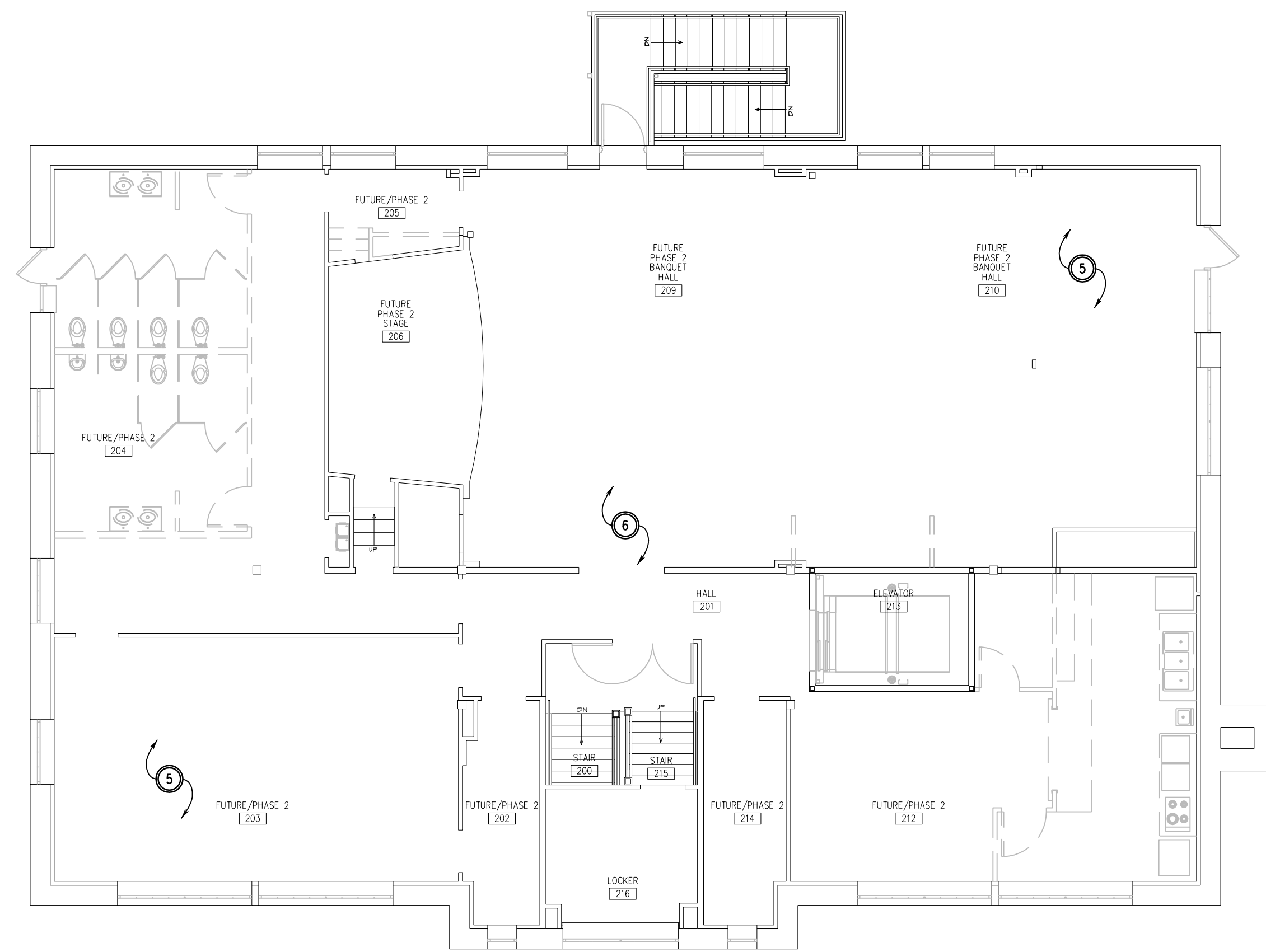
15.60

GENERAL NOTES

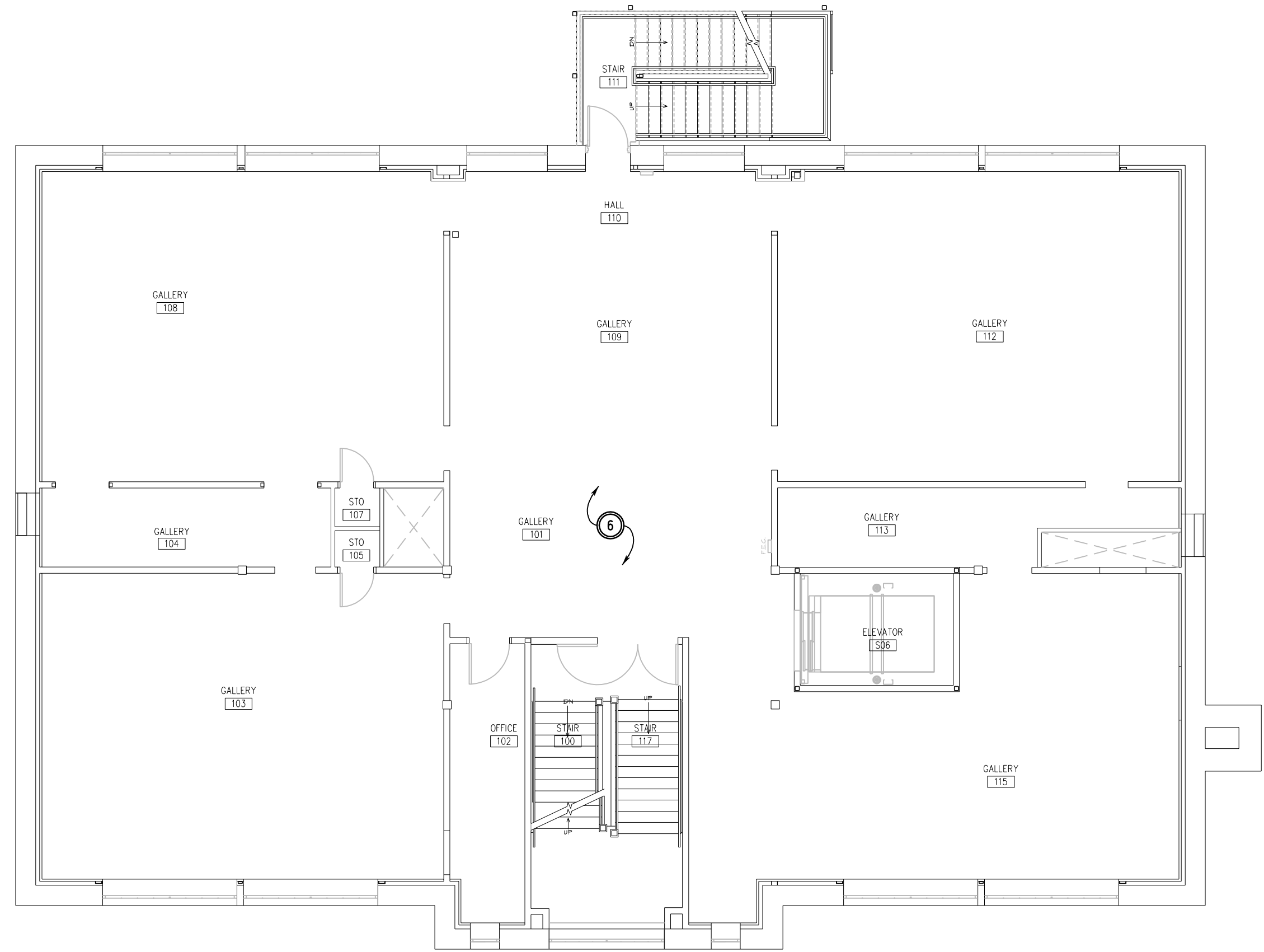
- CONTRACTORS ARE TO EXAMINE THIS SITE AND DOCUMENTS OF OTHER TRADES, AND BECOME FAMILIAR WITH THE FULL SCOPE OF WORK.
- COORDINATE LOCATIONS AND REQUIREMENTS WITH OTHER TRADES PRIOR TO FABRICATION OF MATERIALS. PLAN OFFSETS AS NEEDED TO AVOID CONFLICTS WITH DUCTWORK AND STRUCTURE.
- FURNISH AND INSTALL AN AUTOMATIC FIRE SPRINKLER SYSTEM AND FIRE PUMP SYSTEM TO PROTECT ALL AREAS OF THE BLDG. SYSTEMS SHALL MEET OR EXCEED MINIMUM REQUIREMENTS OF NATIONALLY RECOGNIZED FIRE PROTECTION STANDARDS. SEE SPECIFICATIONS.
- CONNECT FIRE PUMP TO A WATER LINE TO ENSURE FULL AND SUSTAINED WATER DISCHARGE FOR THE REQUIRED DURATION. SEE MECHANICAL AND CIVIL DRAWINGS AND SPECIFICATIONS FOR WATER SUPPLY LINE.
- ALL PORTIONS OF THE SYSTEMS SHALL BE INSTALLED IN ACCORDANCE WITH THE DRAWINGS, DETAILS AND SPECIFICATIONS, AND AS REQUIRED BY JURISDICTIONAL AUTHORITIES AND CODES.
- THIS CONTRACTOR SHALL PROVIDE PROFESSIONAL SERVICES BY A PROPERLY LICENSED DESIGN PROFESSIONAL, WHOSE SIGNATURE AND SEAL SHALL APPEAR ON ALL DRAWINGS, CALCULATIONS, SPECIFICATIONS, CERTIFICATIONS, SHOP DRAWINGS, AND OTHER SUCH SUBMITTALS.
- COORDINATE ALL PIPING AND HEAD LOCATION WITH ARCHITECT TO MAINTAIN A PLEASING VISUAL APPEARANCE.
- FIRE PROTECTION CONTRACTOR SHALL PLAN A PRE-INSTALLATION MEETING WITH ALL TRADES, GC, ARCHITECT, AND OWNER, PRIOR TO INSTALLATION OF FIRE PROTECTION SYSTEM PIPING.
- PRIOR TO FABRICATING NEW FIRE PROTECTION SYSTEM PIPING, MAKE ALL NECESSARY ADJUSTMENTS TO PIPING TO CLEAR BUILDING STRUCTURE, DUCTWORK, OTHER PIPING SYSTEMS, ELECTRICAL COMPONENTS, & LIGHTING FIXTURES, ETC. FIRE PROTECTION CONTRACTOR SHALL RELOCATE ANY FIRE PROTECTION PIPING AND DEVICES THAT ARE INSTALLED WHERE THEY CONFLICT WITH OTHER TRADES AT HIS OWN COST.
- FIRE PROTECTION SYSTEM CONTRACTOR SHALL BE RESPONSIBLE FOR VERIFYING EXISTING WATER SUPPLY.
- IT IS RECOMMENDED THAT PROSPECTIVE FIRE PROTECTION SYSTEM BIDDERS CONTACT THE CITY OF SUNDANCE WY FOR ANY QUESTIONS REGARDING THE CITY WATER SUPPLY SYSTEM PRIOR TO PREPARING & SUBMITTING BIDS.

KEYED NOTES

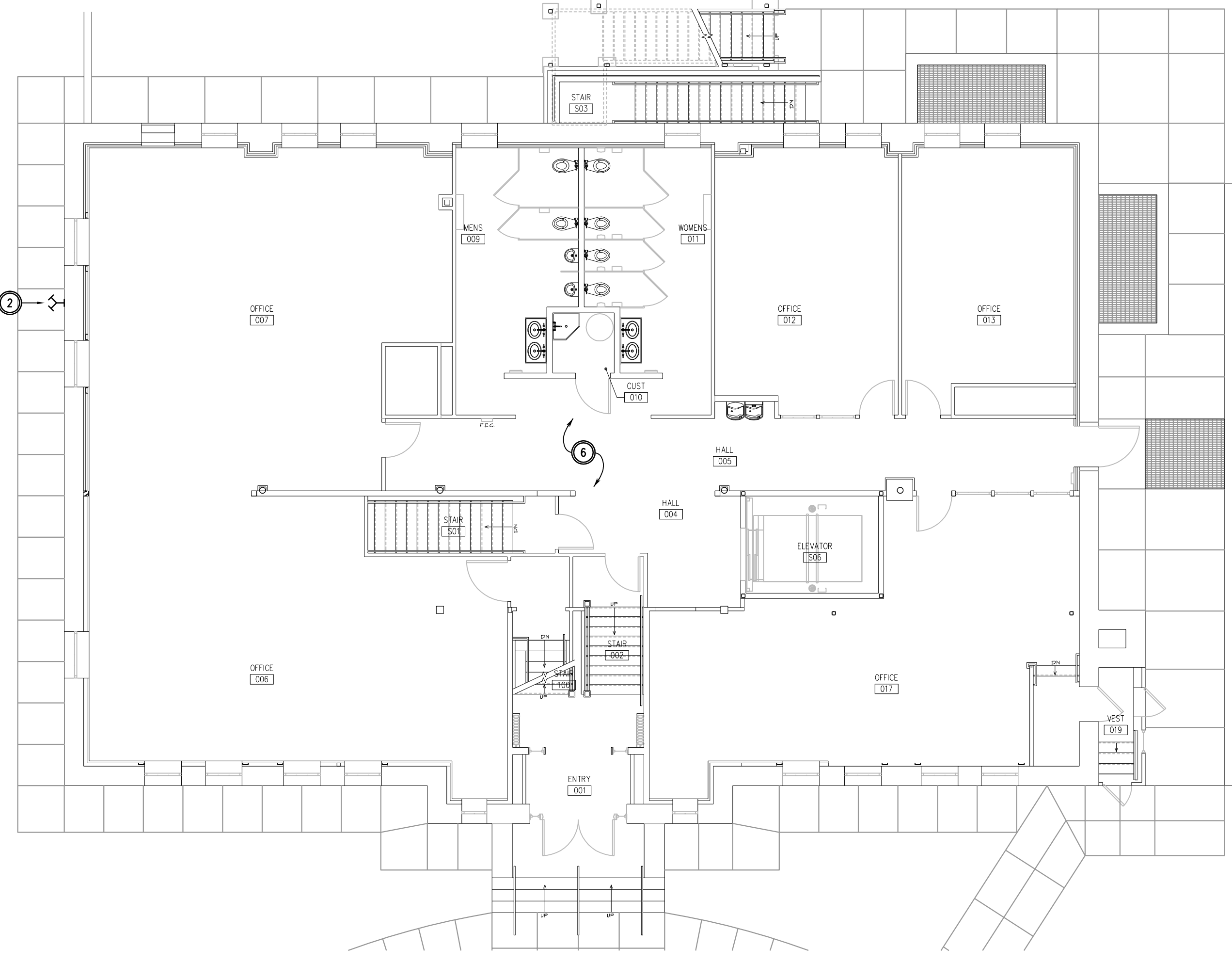
- DESIGNATED LOCATION OF FIRE PUMP ROOM. SEE FIRE PROTECTION SPECIFICATIONS.
- REFER TO CIVIL PLANS FOR PIPING CONTINUATION. IT IS THE CONTRACTOR'S RESPONSIBILITY TO COORDINATE WITH THE SITE UTILITY DRAWINGS AND SITE UTILITY CONTRACTOR FOR ALL BUILDING SERVICES SHOWN ON THESE DRAWINGS.
- SUGGESTED FIRE DEPT CONNECTION AND ALARM LOCATION. COORDINATE WITH OTHER TRADES AND CONFIRM WITH THE AUI PRIOR TO DESIGN AND INSTALLATION.
- COORDINATE ALL PIPING AND HEAD LOCATION WITH ARCHITECT TO MAINTAIN A PLEASING VISUAL APPEARANCE.
- ATTN: SYSTEM TO BE A DRY SYSTEM. SEE FIRE PROTECTION SPECIFICATIONS.
- REFER TO ARCHITECTURAL PLANS FOR AREA OCCUPANCY CLASSIFICATIONS AND CEILING TYPES.



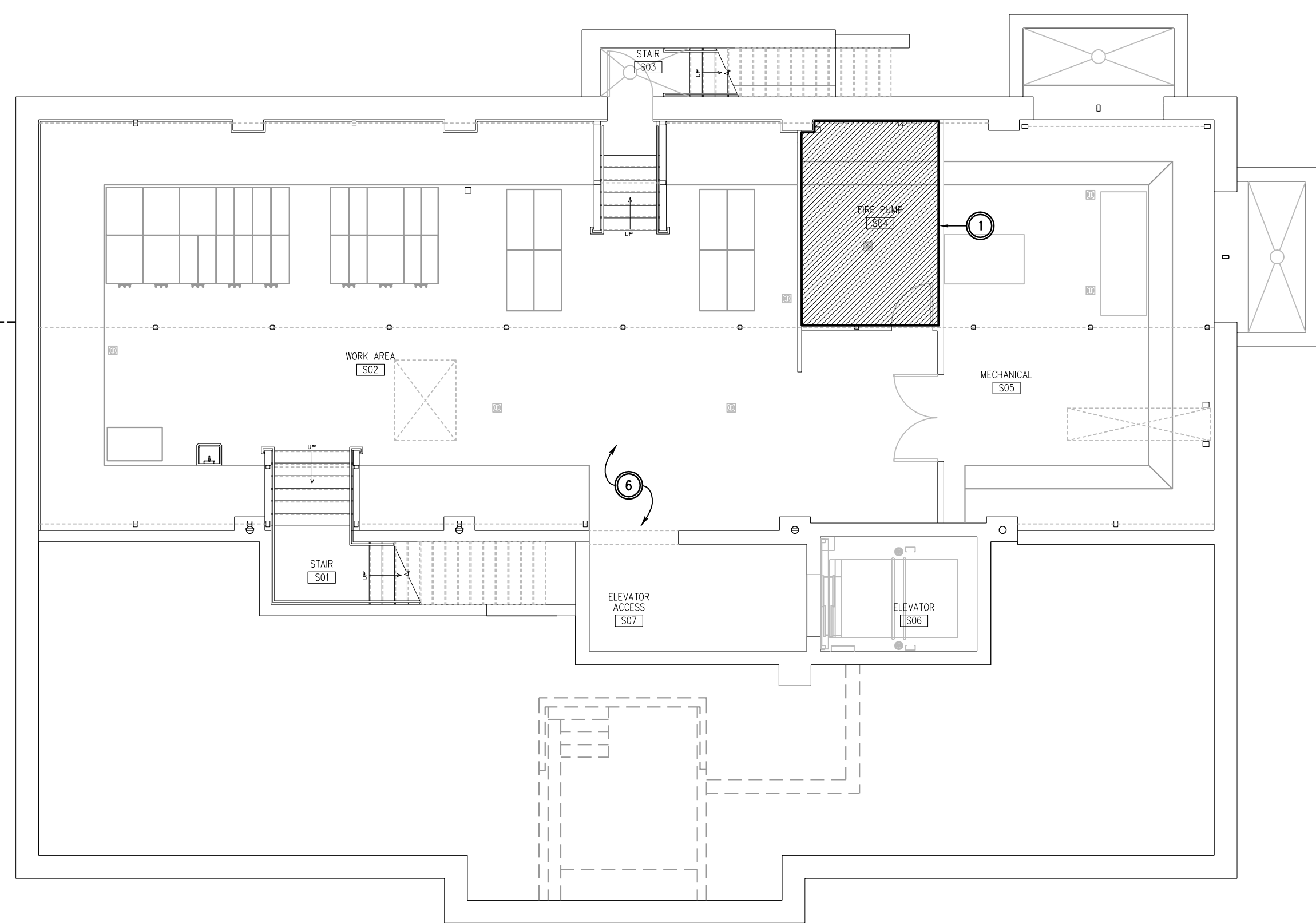
1/4" = 1'-0" 04



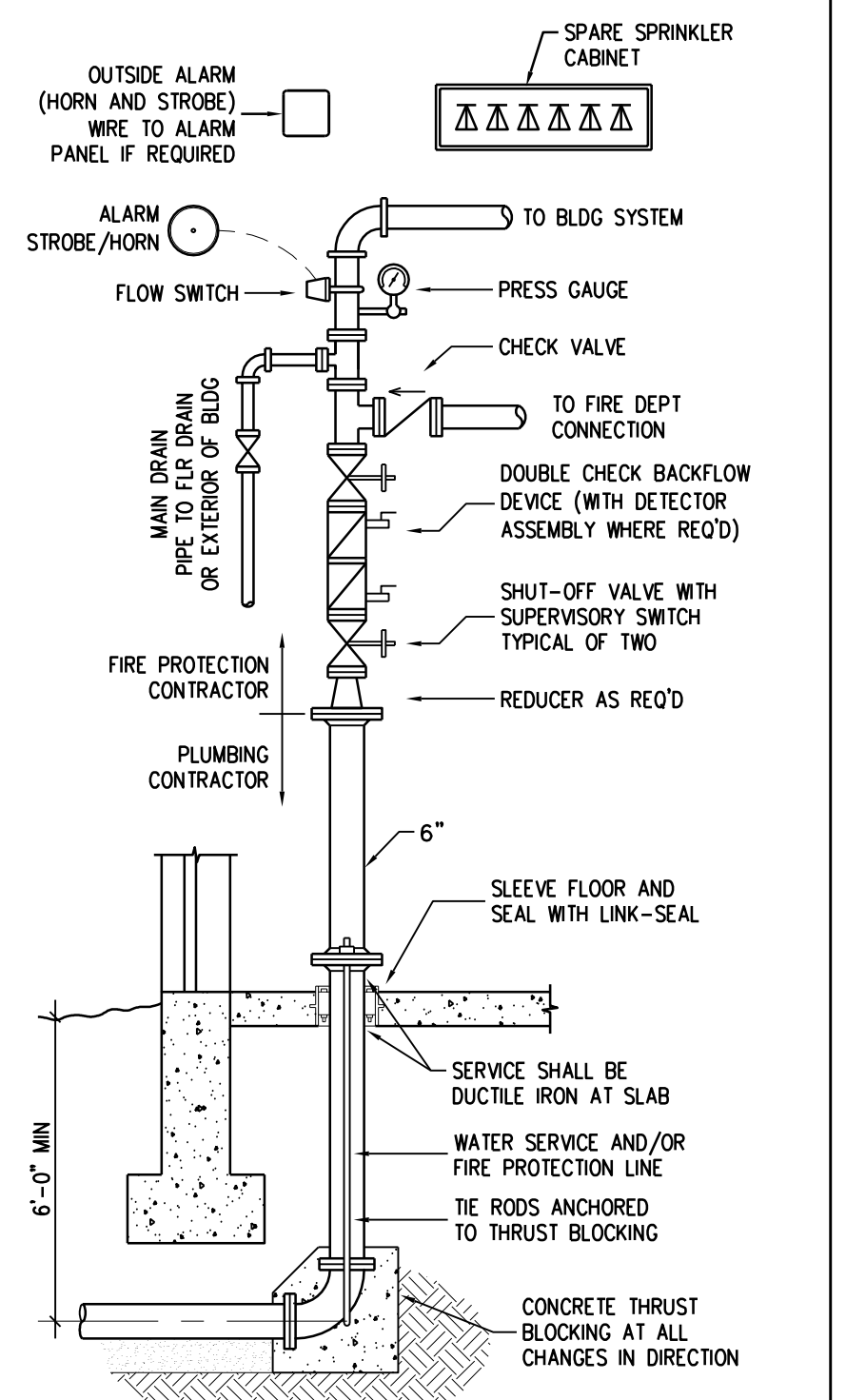
1/4" = 1'-0" 03



1/4" = 1'-0" 02



1/4" = 1'-0" 01



GENERAL REQUIREMENTS ONLY - REVISE INSTALLATION AS REQ'D FOR ACTUAL SYSTEM AND FIRE PUMP DESIGN

FIRE PROTECTION DETAIL NO SCALE 05

SECOND FLOOR AND ATTIC PLAN - FIRE PROTECTION

FIRST FLOOR PLAN - FIRE PROTECTION

BASEMENT FLOOR PLAN - FIRE PROTECTION

SUB-BASEMENT FLOOR PLAN - FIRE PROTECTION