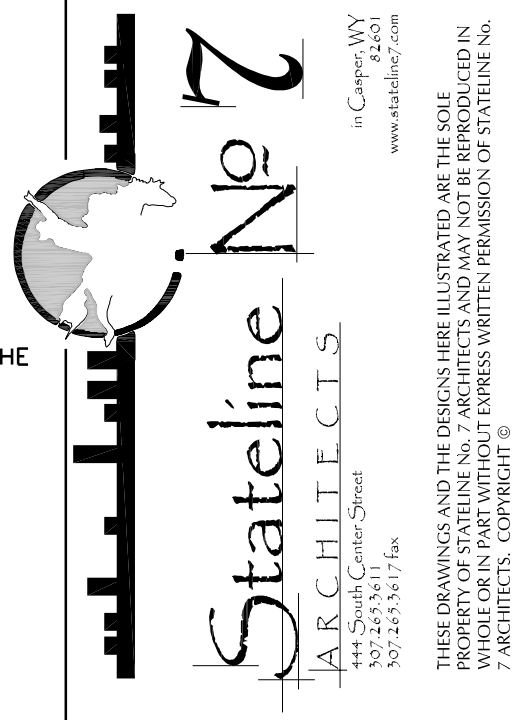


OLD STONEY REMODEL
CROOK COUNTY MUSEUM DISTRICT
108 NORTH 4TH STREET
SUNDANCE WY, 82729

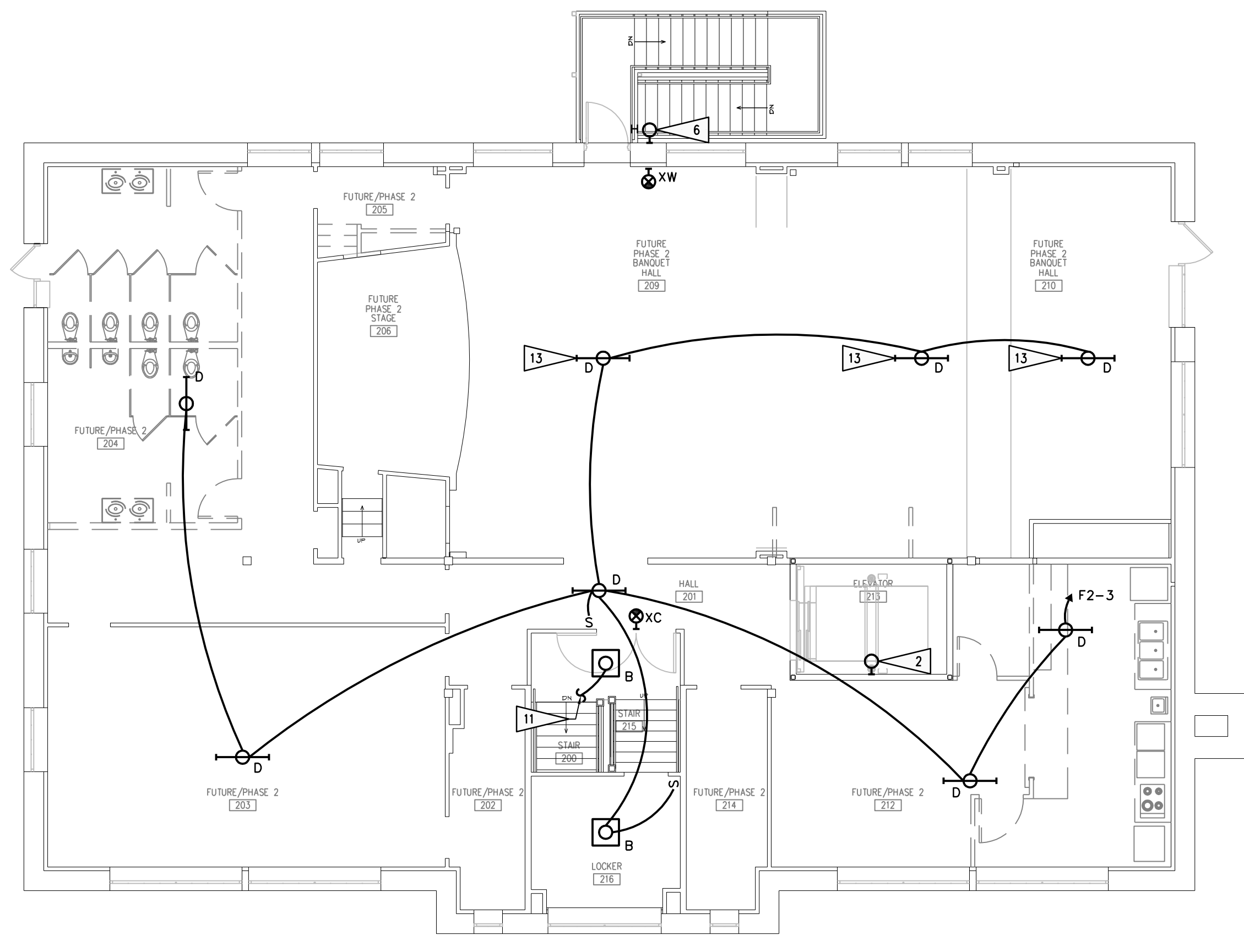


GENERAL NOTES:

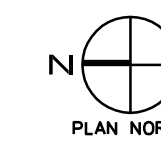
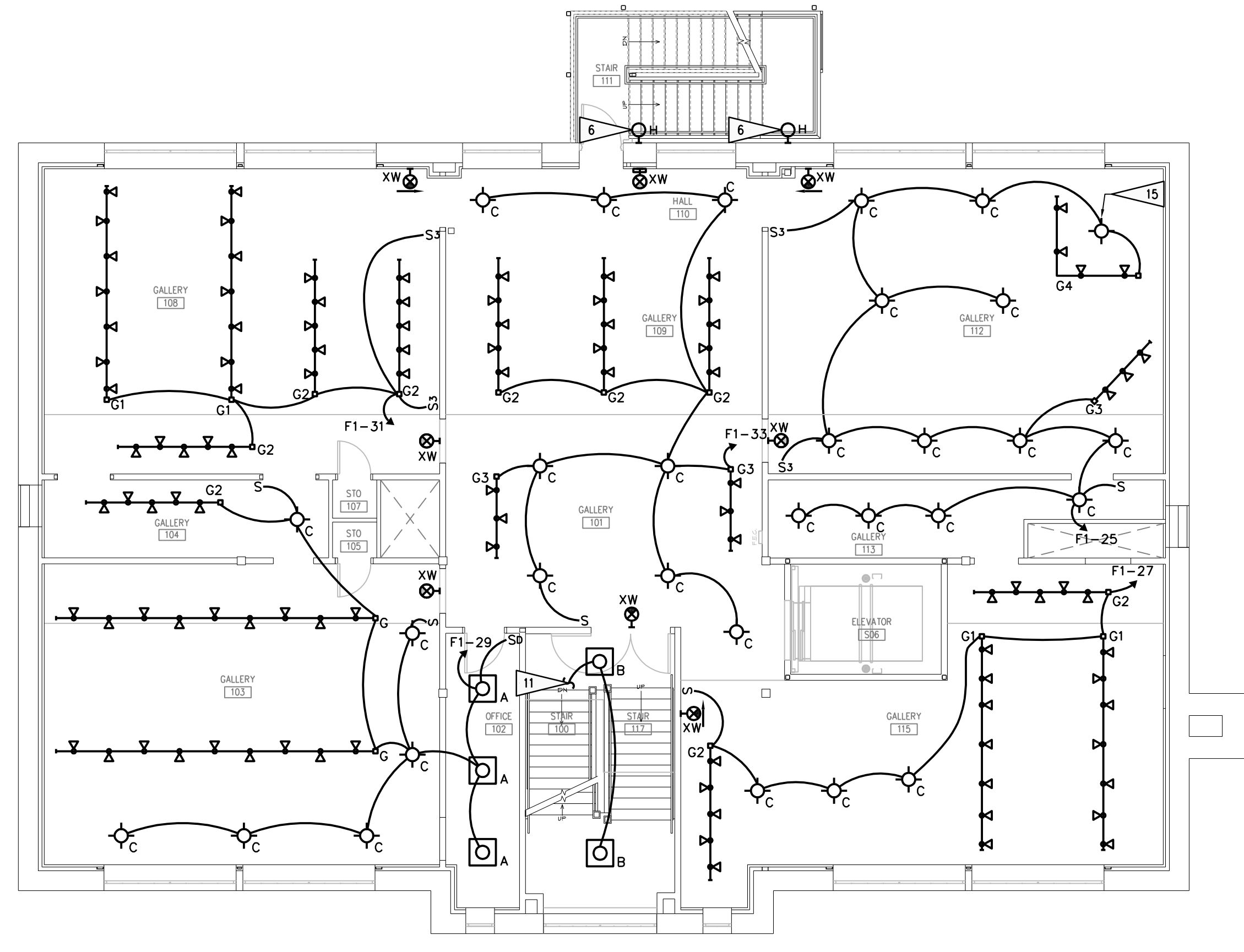
- SEE SPECIFICATIONS FOR MATERIALS AND METHODS.
- ELECTRICAL INSTALLATIONS SHALL COMPLY WITH NEC, STATE AND LOCAL CODES.
- INSTALL EQUIPMENT GROUNDING CONDUCTORS IN ALL CONDUITS.
- CONTRACTORS ARE TO EXAMINE THE SITE AND DOCUMENTS OF OTHER TRADES, AND BECOME FAMILIAR WITH THE FULL SCOPE OF WORK.
- DEVICE LOCATIONS ARE SHOWN DIAGRAMATICALLY. EC IS RESPONSIBLE FOR FINAL DEVICE LOCATIONS, COORDINATED WITH ALL ROOM INTERFERENCES.
- ALL PENETRATIONS FOR RACEWAY AND WIRE WHICH ARE FURNISHED AND INSTALLED BY THE EC, THAT PENETRATE FLOORS, FIRE AND/OR SMOKE WALLS, AND FULL HEIGHT PARTITIONS (INCLUDING CHASE WALLS) SHALL BE SEALED WITH A SYSTEM SPECIFICALLY UL APPROVED FOR THE APPLICATION, TO MAINTAIN FIRE RATING. SEE ARCHITECTURAL DRAWINGS.
- CONNECT ALL EXIT AND EGRESS LIGHT FIXTURES TO NEAREST UNSWITCHED LIGHTING CIRCUIT.
- THE WALL FINISH OF THE FIRST FLOOR IS FIRE-TREATED PLYWOOD. COORDINATE INSTALLATION OF ELECTRICAL DEVICES, BOXES, AND FACE PLATES WITH THIS TYPE OF CONSTRUCTION.

FLAG NOTES:

- CONNECT CIRCUIT NOTED TO ELEVATOR CONTROL ROOM RECEPTACLE CIRCUIT.
- PROVIDE NEW 120V LIGHT FIXTURE IN ELEVATOR PIT AND AT TOP OF ELEVATOR SHAFT. CONNECT TO ELEVATOR PIT RECEPTACLE CIRCUIT. PROVIDE LIGHT SWITCH AT SHAFT ENTRANCE. LOCATE SWITCH AND LIGHT FIXTURES AS DIRECTED BY ELEVATOR MANUFACTURER. FIXTURE TO BE RED DOT #W6-01-C OR ACCEPTABLE EQUAL WITH 75W EQUIVALENT ENCLOSED-RATED LED LAMP. CONNECT TO ELEVATOR PIT RECEPTACLE CIRCUIT.
- EMERGENCY EGRESS LIGHTING UPS 550VA, 120V WITH 10YR. SEALED LEAD CALCIUM BATTERY AND CIRCUIT BREAKER. CHLORIDE CHUPS-550-A-OCB1 OR ACCEPTABLE EQUAL.
- EXTERIOR LIGHTING CONTROL PANEL. SEE LIGHTING CONTROL DETAIL.
- CONNECT CIRCUIT NOTED TO EMERGENCY UPS VIA EXTERIOR LIGHTING CONTROL PANEL.
- CONNECT LIGHT FIXTURE NOTED TO EMERGENCY UPS VIA EXTERIOR LIGHTING CONTROL PANEL.
- MOUNT FIXTURE NOTED 6" ABOVE DOOR.
- PROVIDE WALL SWITCH, LINE VOLTAGE, AUTO-ON/AUTO-OFF, DUAL TECHNOLOGY, OCCUPANCY SENSOR. WATTSTOPPER DSW-301 OR ACCEPTABLE EQUAL.
- PROVIDE CEILING MOUNTED, LINE VOLTAGE, AUTO-ON/AUTO-OFF, DUAL TECHNOLOGY, OCCUPANCY SENSOR. WATTSTOPPER DT-355 OR ACCEPTABLE EQUAL.
- DIMMING SWITCH, OCCUPANCY SENSOR SHALL BE 120V, 0-10V, WITH ON/OFF SWITCH COMPATIBLE WITH LED FIXTURES. LEVITON IP710-LFZ OR ACCEPTABLE EQUAL.
- CONNECT CIRCUIT NOTED TO SWITCHED STAIR LIGHTING CIRCUIT ON PREVIOUS FLOOR.
- CONNECT CIRCUIT NOTED TO STAIR LIGHT FIXTURES ON UPPER FLOORS.
- DO NOT DAMAGE EXISTING TIN CEILING TILES DURING INSTALLATION OF THE LIGHT FIXTURE NOTED.
- SWITCH LIGHT FIXTURE NOTED WITH HALLWAY LIGHT FIXTURES.
- HANG FIXTURE NOTED DOWN THROUGH THE TOP OF THE TEEPEE DISPLAY. VERIFY LOCATION AND HEIGHT WITH OWNER.
- CONNECT TO SWITCHED LIGHTING CIRCUIT AT THE TOP OF THE STAIRS.



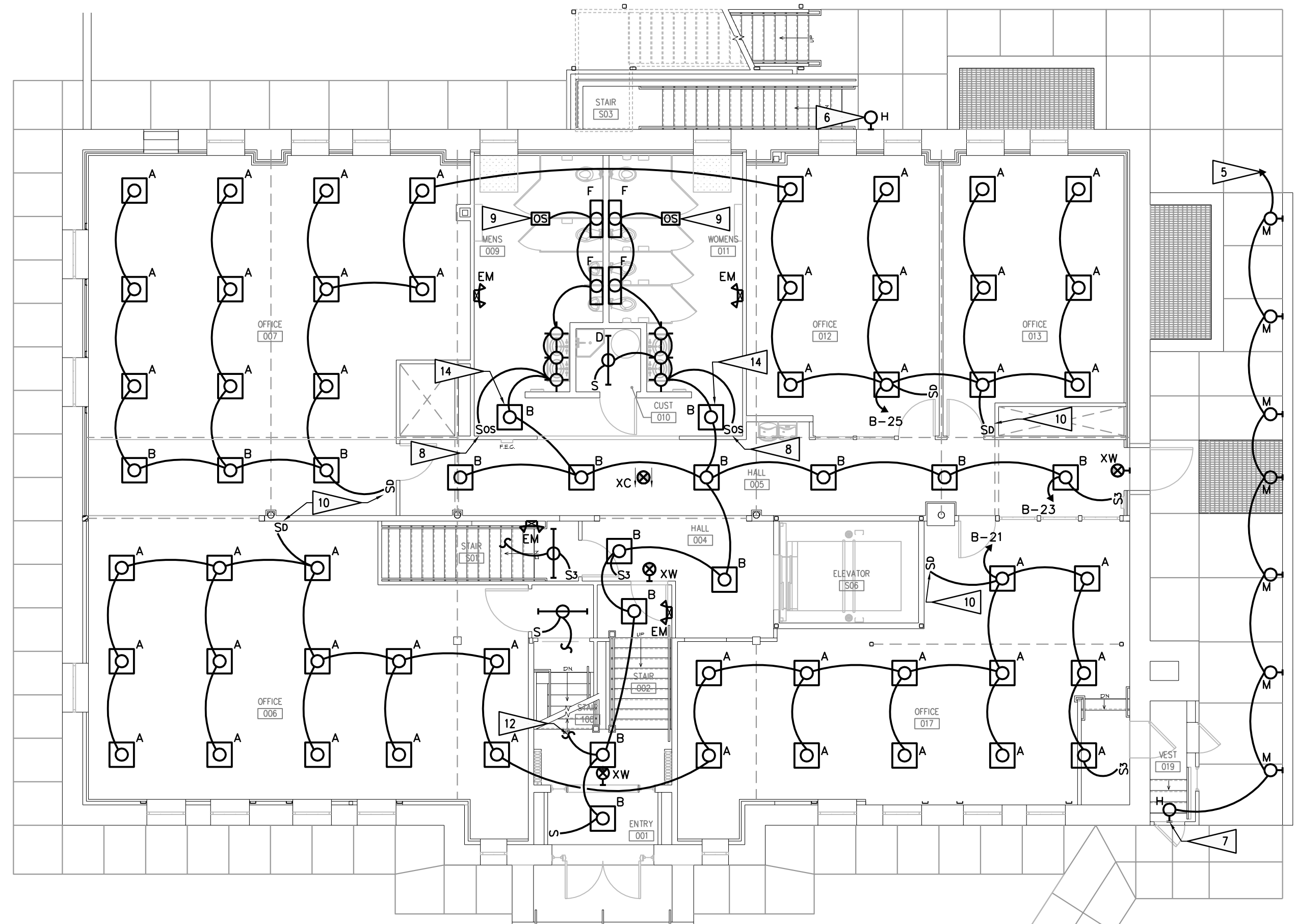
1/8" = 1'-0" 04



1/8" = 1'-0" 03

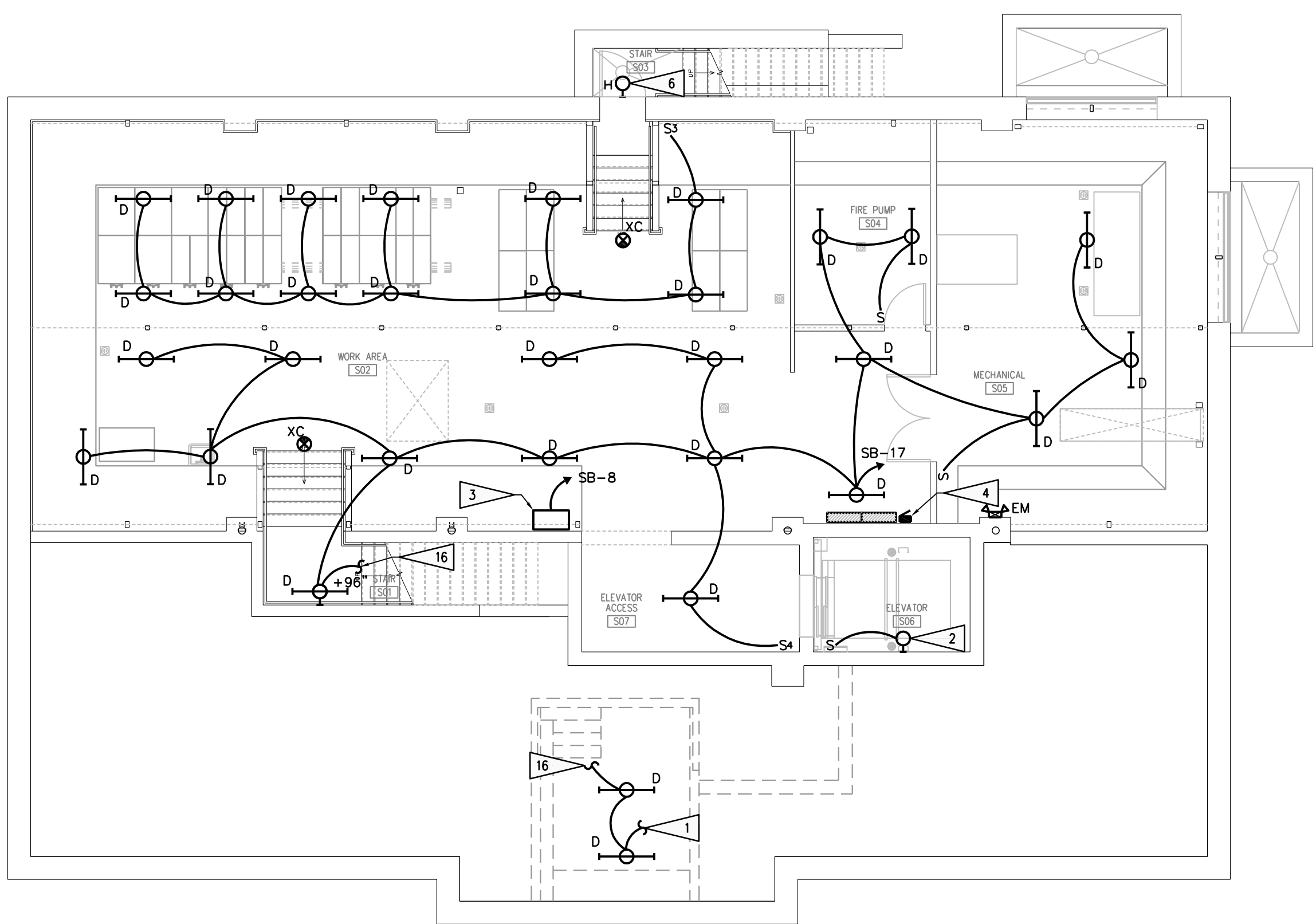
SECOND FLOOR LIGHTING PLAN

FIRST FLOOR LIGHTING PLAN



1/8" = 1'-0" 02

BASEMENT AND SITE LIGHTING PLAN



1/8" = 1'-0" 01

SUB-BASEMENT LIGHTING PLAN

PROJECT NUMBER
16-022 / 17040

DATE
11/20/2017

DRAWN BY
MNS

DISK ID.

SHEET TITLE
PHASE 1
LIGHTING PLANS

SHEET NUMBER

16.10