

OLD STONEY REMODEL  
CROOK COUNTY MUSEUM DISTRICT  
108 NORTH 4TH STREET  
SUNDANCE WY, 82729

Statlinc No. 7  
ARCHITECTS  
1607 CV Ave. Ste. 3023  
Casper, WY 82604  
(307) 266-6033

Engineering  
Design  
Associates  
1607 CV Ave. Ste. 3023  
Casper, WY 82604  
(307) 266-6033

PROJECT NUMBER  
16-022 / 17040

DATE  
11/20/2017

DRAWN BY  
MNS

DISK ID.

SHEET TITLE  
PHASE 1  
POWER PLANS

SHEET NUMBER

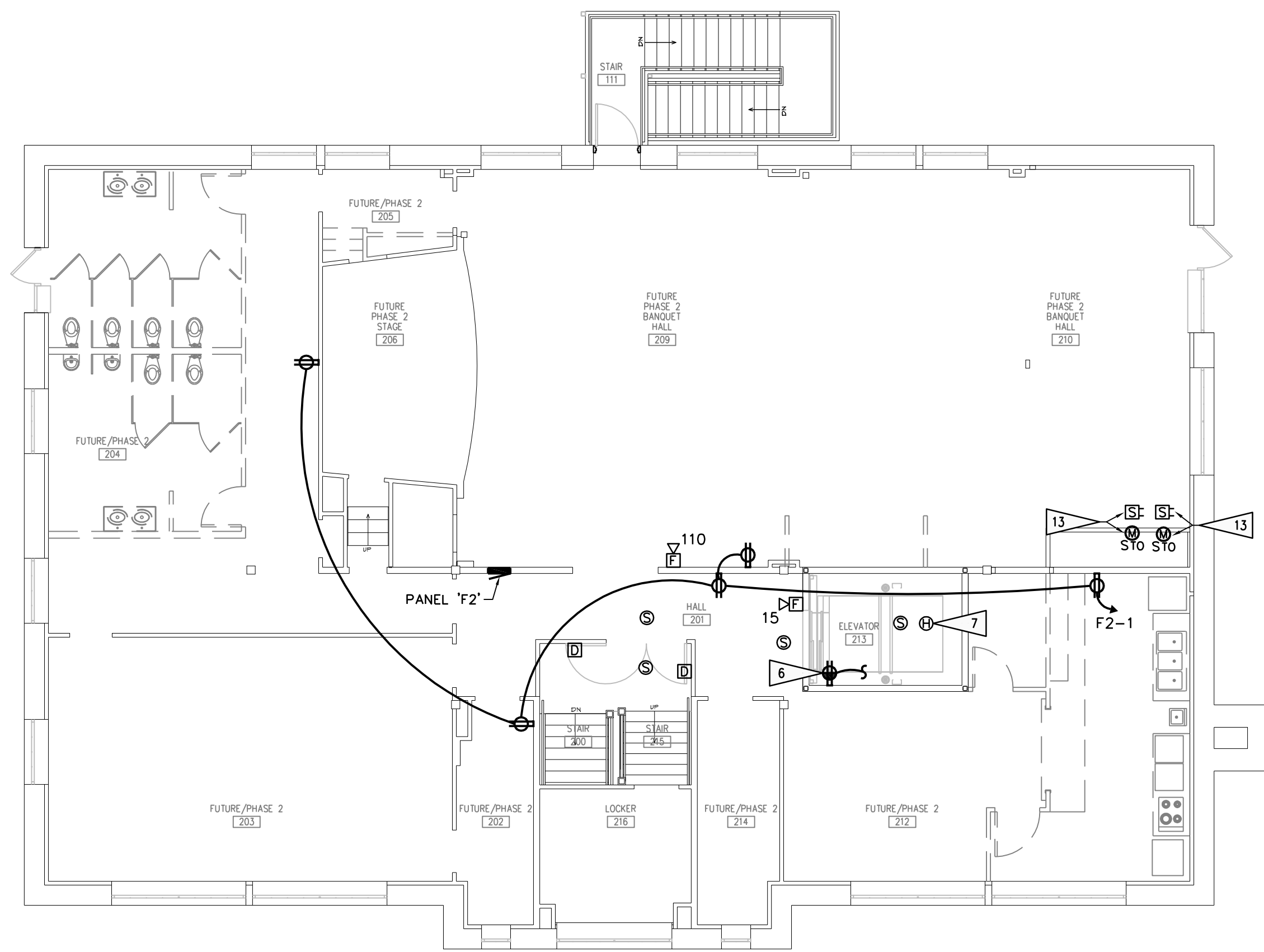
16.20

GENERAL NOTES:

- SEE SPECIFICATIONS FOR MATERIALS AND METHODS.
- ELECTRICAL INSTALLATIONS SHALL COMPLY WITH NEC, STATE AND LOCAL CODES.
- INSTALL EQUIPMENT GROUNDING CONDUCTORS IN ALL CONDUITS.
- CONTRACTORS ARE TO EXAMINE THE SITE AND DOCUMENTS OF OTHER TRADES, AND BECOME FAMILIAR WITH THE FULL SCOPE OF WORK.
- DEVICE LOCATIONS ARE SHOWN DIAGRAMATICALLY. EC IS RESPONSIBLE FOR FINAL DEVICE LOCATIONS, COORDINATED WITH ALL ROOM INTERFERENCES.
- ALL PENETRATIONS FOR RACEWAY AND WIRE WHICH ARE FURNISHED AND INSTALLED BY THE EC, THAT PENETRATE FLOORS, FIRE AND/OR SMOKE WALLS, AND FULL HEIGHT PARTITIONS (INCLUDING CHASE WALLS) SHALL BE SEALED WITH A SYSTEM SPECIFICALLY UL APPROVED FOR THE APPLICATION, TO MAINTAIN FIRE RATING. SEE ARCHITECTURAL DRAWINGS.
- FOR TEMPERATURE CONTROL EQUIPMENT, ALL POWER WIRING 120V AND ABOVE BY EC, LESS THAN 120V ROUGH-IN BY EC, LOW VOLTAGE POWER AND CONTROL WIRING BY MC. COORDINATE ALL HVAC POWER/CONTROL WIRING WITH MC.
- FOR WALL MOUNTED SENSORS (TEMPERATURE, CO2, PRESSURE, ETC.) EC TO PROVIDE A DEEP 4" SQUARE BOX, SINGLE GANG RING, AND 1/2" EMT WITH BUSHINGS AND PULL STRING TO MECHANICAL EQUIPMENT. SEE MECHANICAL DRAWINGS FOR LOCATIONS AND QUANTITIES.
- THE WALL FINISH OF THE FIRST FLOOR IS FIRE-TREATED PLYWOOD. COORDINATE INSTALLATION OF ELECTRICAL DEVICES, BOXES, AND FACE PLATES WITH THIS TYPE OF CONSTRUCTION.

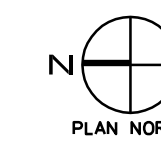
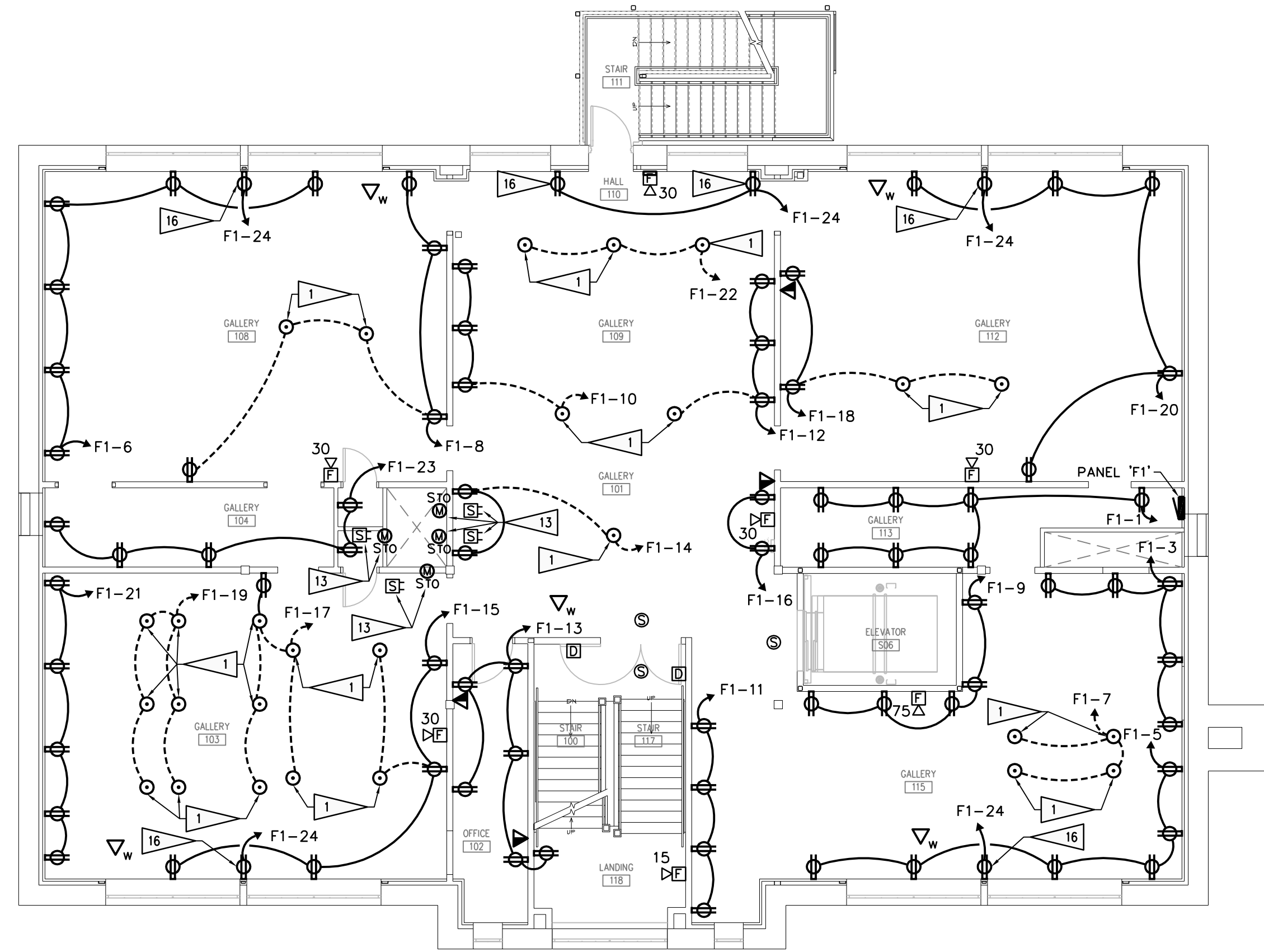
FLAG NOTES:

- PROVIDE SINGLE-GANG FLOOR BOX WITH (1) DUPLEX RECEPTACLE. FLOOR BOX SHALL BE HUBBELL 32481 WITH RECTANGULAR FLANGE AND DUPLEX FLAP COVER OR ACCEPTABLE EQUAL. COLOR TO BE BRASS. VERIFY EXACT LOCATION WITH OWNER PRIOR TO INSTALLATION.
- PROVIDE 300A-208V-3 PH SHUNT-TRIP CIRCUIT BREAKER FOR ELEVATOR MACHINE. BREAKER SHALL BE LOCKABLE OPEN. FEEDER SHALL BE 2" x 48/0 #4 CND. VERIFY BREAKER AND FEEDER SIZE WITH ELEVATOR MANUFACTURER. CONNECT TO CONTROL CABINET AS DIRECTED BY MANUFACTURER.
- PROVIDE LOCKABLE OPEN DISCONNECTING MEANS FOR ELEVATOR CAR LIGHTS, RECEPTABLES, AND VENTILATION. CONNECT TO ELEVATOR CAR AS DIRECTED BY ELEVATOR MANUFACTURER.
- PROVIDE CONNECTION FOR ELEVATOR CAR LIGHTS, RECEPTABLES, VENTILATION, ETC. PER ELEVATOR MANUFACTURER.
- INSTALL RECEPTACLE NOTED IN ELEVATOR PIT. LOCATE PER ELEVATOR MANUFACTURER'S DIRECTIONS.
- INSTALL RECEPTACLE NOTED AT TOP OF ELEVATOR SHAFT. LOCATE PER ELEVATOR MANUFACTURER'S DIRECTIONS. CONNECT TO ELEVATOR PIT RECEPTACLE CIRCUIT.
- PROVIDE NEW HEAT DETECTOR IN ELEVATOR EQUIPMENT ROOM AND AT TOP OF ELEVATOR SHAFT. CONNECT DETECTOR TO SHUNT-TRIP ELEVATOR EQUIPMENT UPON ALARM. LOCATE DETECTOR WITHIN 2' OF SPRINKLER HEAD.
- PROVIDE ONE DEDICATED PHONE LINE FOR ELEVATOR. LOCATE AS DIRECTED BY ELEVATOR MANUFACTURER.
- ALL EQUIPMENT, DEVICES AND CONNECTIONS FOR ELEVATOR SHALL BE INSTALLED PER NEC 620 AND MANUFACTURER'S DIRECTIONS.
- FIRE ALARM CONTROL PANEL. SEE FIRE ALARM RISER DIAGRAM.
- PROVIDE FIRE ALARM MONITOR MODULES AS REQUIRED FOR AT LEAST (2) TAMPER SWITCHES, (2) FLOW SWITCHES, (1) PRESSURE ALARM SWITCH, AND (1) LOW AIR ALARM. VERIFY LOCATIONS WITH FIRE PROTECTION PROVIDER. SEE FIRE PROTECTION SPECIFICATION FOR DETAILS.
- TELEPHONE EQUIPMENT MOUNTING BOARD AND DATA RACK. SEE DETAIL 2/16.40.
- COMBINATION SMOKE/FIRE DAMPER. CONNECT TO FIRE ALARM SYSTEM REQUIRED BY CODE. LOCATE SMOKE DETECTORS AS DIRECTED BY IMC 607. CONFIRM LOCATION OF DAMPER WITH MC.
- MAIN SERVICE ENTRANCE DISCONNECT AND METER. VERIFY REQUIREMENTS WITH UTILITY COMPANY. SEE DETAIL 1/15.40.
- PROVIDE GFI BREAKER FOR WATER COOLER CIRCUIT NOTED.
- INSTALL RECEPTACLE NOTED ABOVE WINDOW FOR MOTOR OPERATED SHADE(S). VERIFY LOCATION WITH WINDOW SHADE INSTALLER PRIOR TO INSTALLATION.



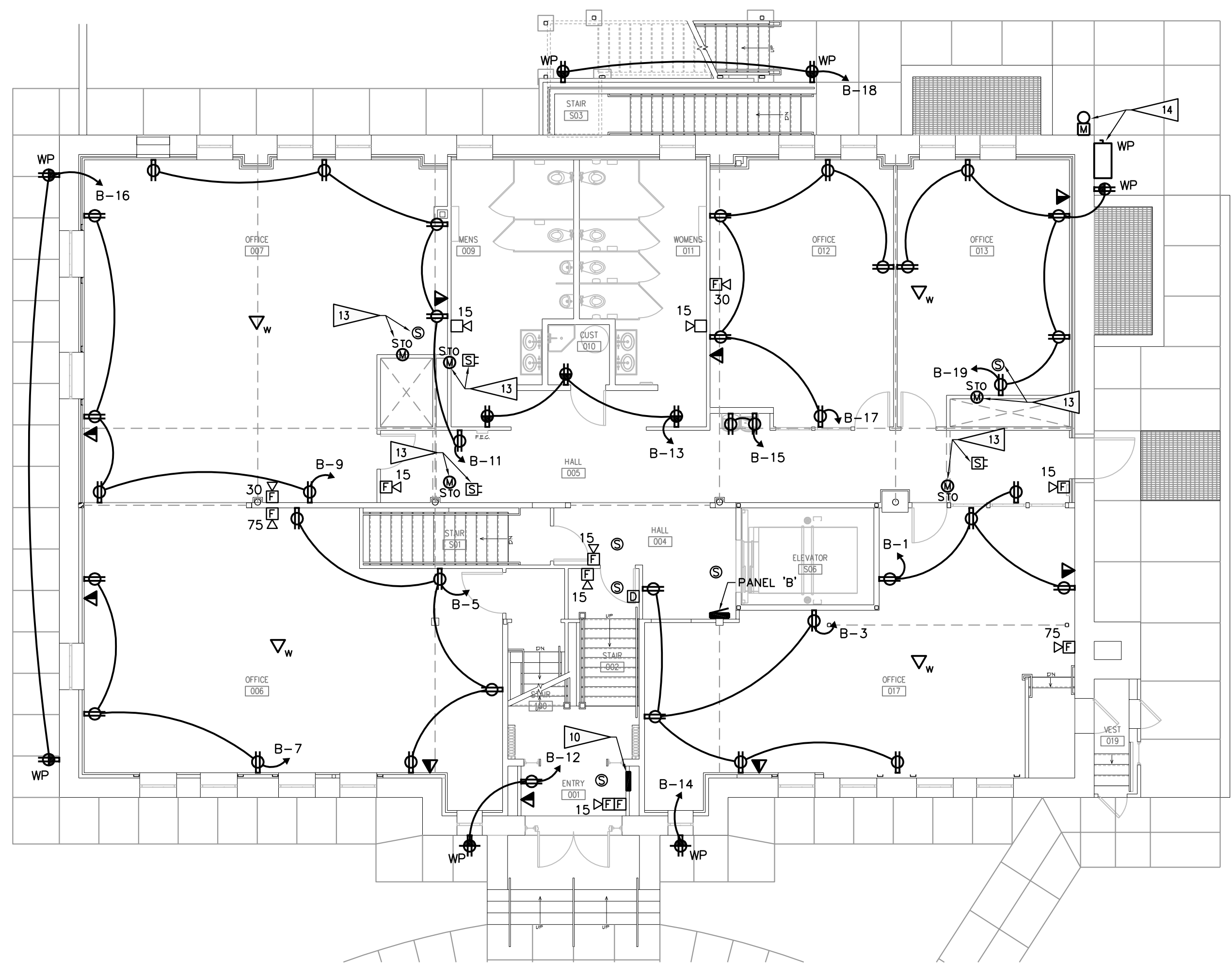
1/8" = 1'-0" 04

SECOND FLOOR POWER PLAN



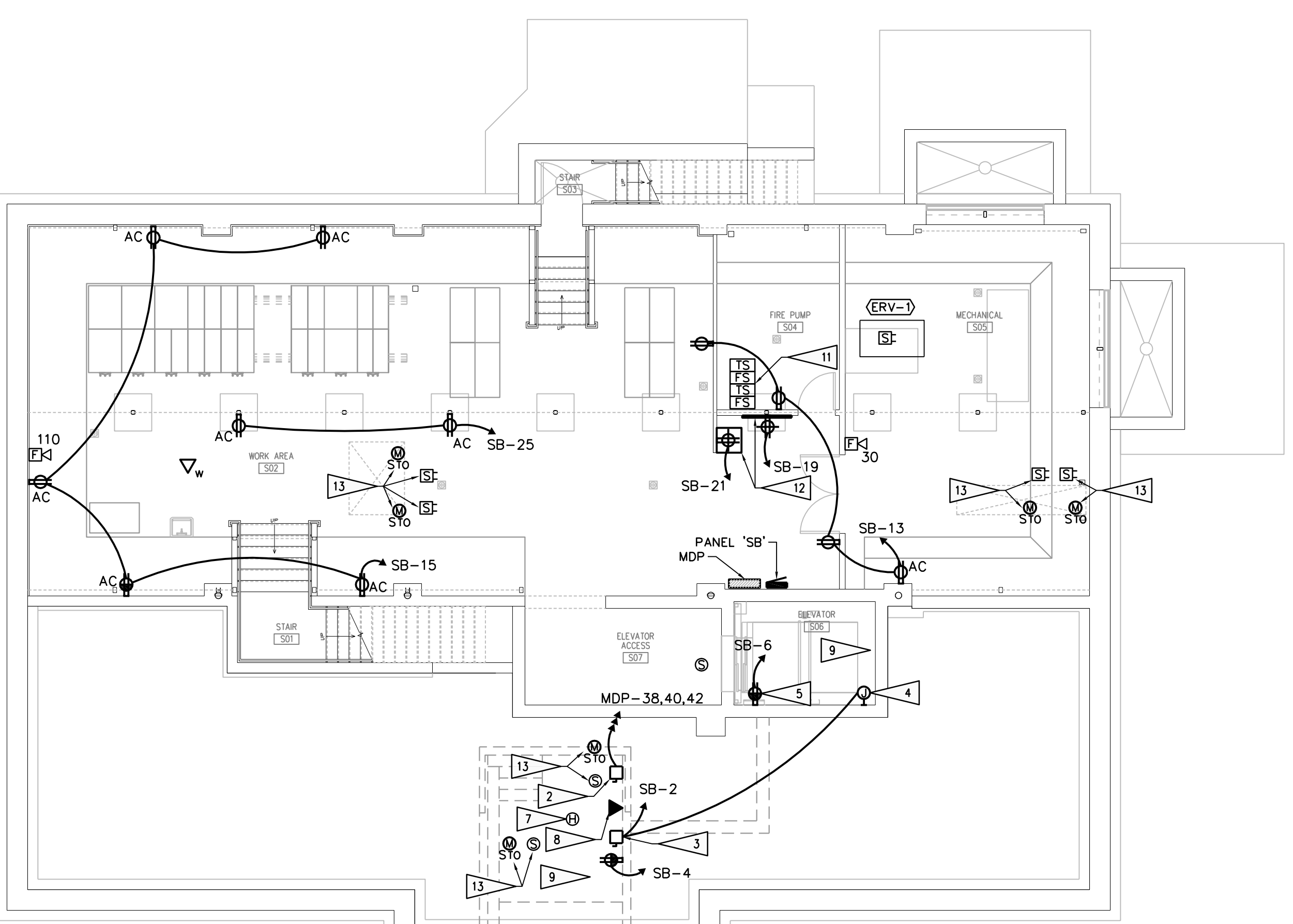
1/8" = 1'-0" 03

FIRST FLOOR POWER PLAN



1/8" = 1'-0" 02

BASEMENT POWER PLAN



1/8" = 1'-0" 01

SUB-BASEMENT POWER PLAN