

- GENERAL NOTES:**
- SEE SPECIFICATIONS FOR MATERIALS AND METHODS.
  - ELECTRICAL INSTALLATIONS SHALL COMPLY WITH NEC, STATE AND LOCAL CODES.
  - INSTALL EQUIPMENT GROUNDING CONDUCTORS IN ALL CONDUITS.
  - CONTRACTORS ARE TO EXAMINE THE SITE AND DOCUMENTS OF OTHER TRADES, AND BECOME FAMILIAR WITH THE FULL SCOPE OF WORK.
  - DEVICE LOCATIONS ARE SHOWN DIAGRAMMATICALLY. EC IS RESPONSIBLE FOR FINAL DEVICE LOCATIONS, COORDINATED WITH ALL ROOM INTERFERENCES.
  - ALL PENETRATIONS FOR RACEWAY AND WIRE WHICH ARE FURNISHED AND INSTALLED BY THE EC, THAT PENETRATE FLOORS, FIRE AND/OR SMOKE WALLS, AND FULL HEIGHT PARTITIONS (INCLUDING CHASE WALLS) SHALL BE SEALED WITH A SYSTEM SPECIFICALLY UL APPROVED FOR THE APPLICATION, TO MAINTAIN FIRE RATING. SEE ARCHITECTURAL DRAWINGS.
  - FOR TEMPERATURE CONTROL EQUIPMENT, ALL POWER WIRING 120V AND ABOVE BY EC, LESS THAN 120V ROUGH-IN BY EC, LOW VOLTAGE POWER AND CONTROL WIRING BY MC. COORDINATE ALL HVAC POWER/CONTROL WIRING WITH MC.
  - FOR WALL MOUNTED SENSORS (TEMPERATURE, CO2, PRESSURE, ETC.) EC TO PROVIDE A DEEP 4" SQUARE BOX, SINGLE GANG RING, AND 1/2" EMT AND PULL STRING TO CONTROLLED EQUIPMENT. SEE MECHANICAL DRAWINGS FOR LOCATIONS AND QUANTITIES.
  - MECHANICAL EQUIPMENT SHOWN INSTALLED ON THE SECOND FLOOR IS ALTERNATE #1. SEE MECHANICAL DRAWINGS.

- FLAG NOTES:**
- 30HP, 208, 3 PHASE FIRE PUMP AND CONTROLLER PROVIDED IN ROOM NOTED BY OTHERS. VERIFY LOCATION WITH FIRE PROTECTION INSTALLER. SEE ONE-LINE DIAGRAM. ALL FIRE PUMP CONNECTIONS AND INSTALLATIONS TO BE PER NEC 695. SEE FIRE PROTECTION SPECIFICATION FOR DETAILS.
  - 2 HP, 208V, 3 PHASE PRESSURE MAINTENANCE PUMP AND CONTROLLER PROVIDED IN ROOM NOTED BY OTHERS. VERIFY LOCATION WITH FIRE PROTECTION INSTALLER. CONNECT TO CIRCUIT SHOWN. SEE FIRE PROTECTION SPECIFICATION FOR DETAILS.
  - HVAC CONTROL CABINET PROVIDED BY EC. CONTROL EQUIPMENT PROVIDED BY MC. PROVIDE POWER CONNECTION AS REQUIRED. SEE MECHANICAL DRAWINGS AND SPECIFICATIONS AND DETAIL 4/16.41.
  - MECHANICAL EQUIPMENT NOTED IS PROVIDED WITH A MANUFACTURER'S PRE-WIRED DISCONNECT.
  - MECHANICAL EQUIPMENT NOTED IS PROVIDED WITH VFD BY MC. CONNECT AS DIRECTED BY MANUFACTURER.
  - INSTALL BOX FOR REMOTE BULB THERMOSTAT SENSOR IN PLENUM BOX AND ROUTE CONDUIT FROM BOX BACK TO THERMOSTAT LOCATION. COORDINATE LOCATION WITH MC.
  - LINE VOLTAGE THERMOSTAT AND MOTORIZED DAMPERS PROVIDED BY MC. CONNECT THERMOSTAT TO CONTROL MOTORIZED DAMPERS AS DIRECTED BY MC. SEE MECHANICAL DRAWINGS FOR SPECIFICS AND VERIFY DAMPER LOCATIONS WITH MC.
  - LINE VOLTAGE THERMOSTAT PROVIDED BY MC. EC TO INSTALL AND CONNECT AS REQUIRED.

OLD STONEY REMODEL  
CROOK COUNTY MUSEUM DISTRICT  
108 NORTH 4TH STREET  
SUNDANCE WY, 82729

Staline No. 7  
ARCHITECTS  
1687 CV Ave. Ste. 303  
Casper, WY 82604  
(307) 266-6033

Engineering Design Associates  
1687 CV Ave. Ste. 303  
Casper, WY 82604  
(307) 266-6033

PROJECT NUMBER  
16-022 / 17040

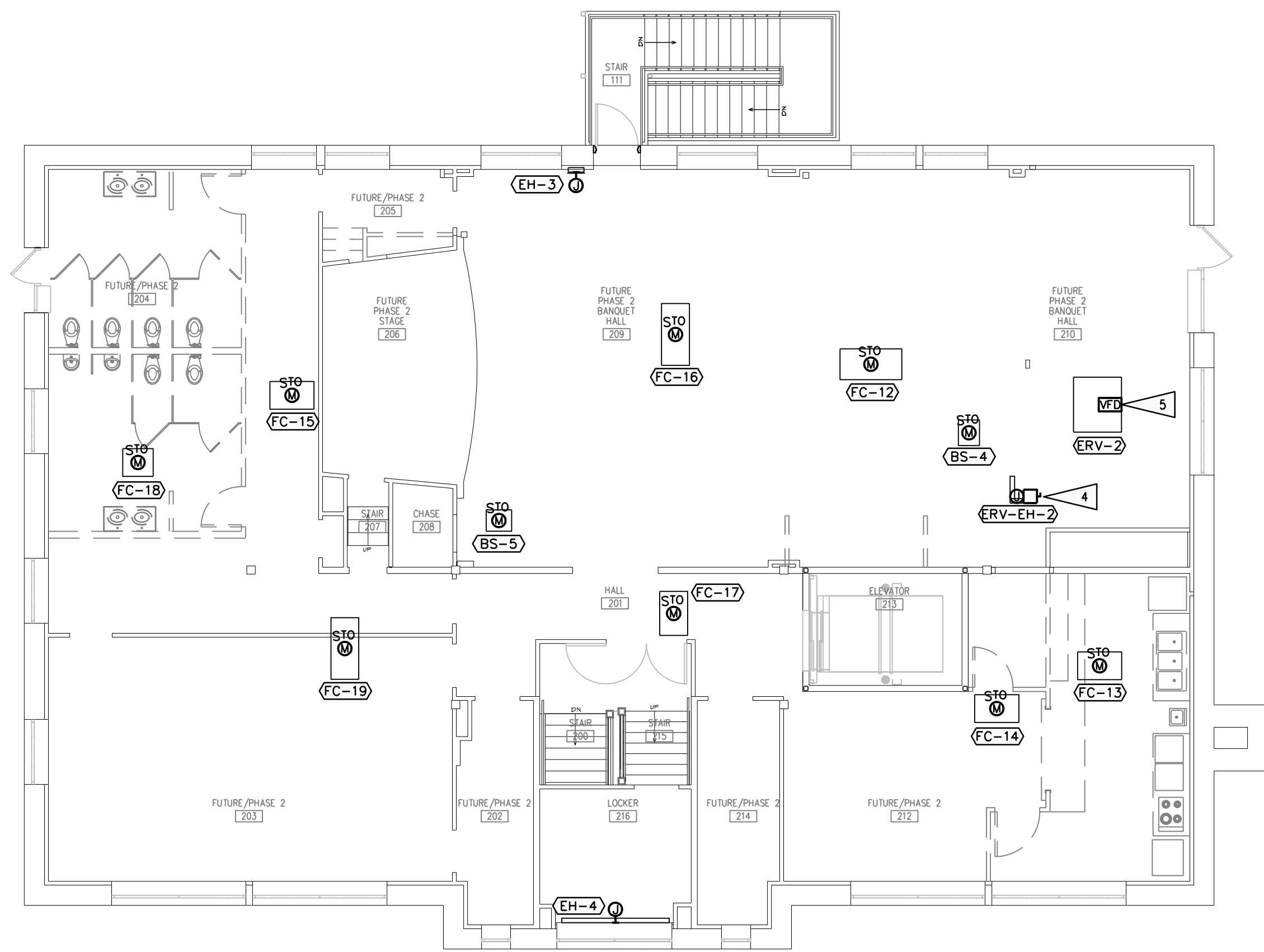
DATE  
11/20/2017

DRAWN BY  
MNS

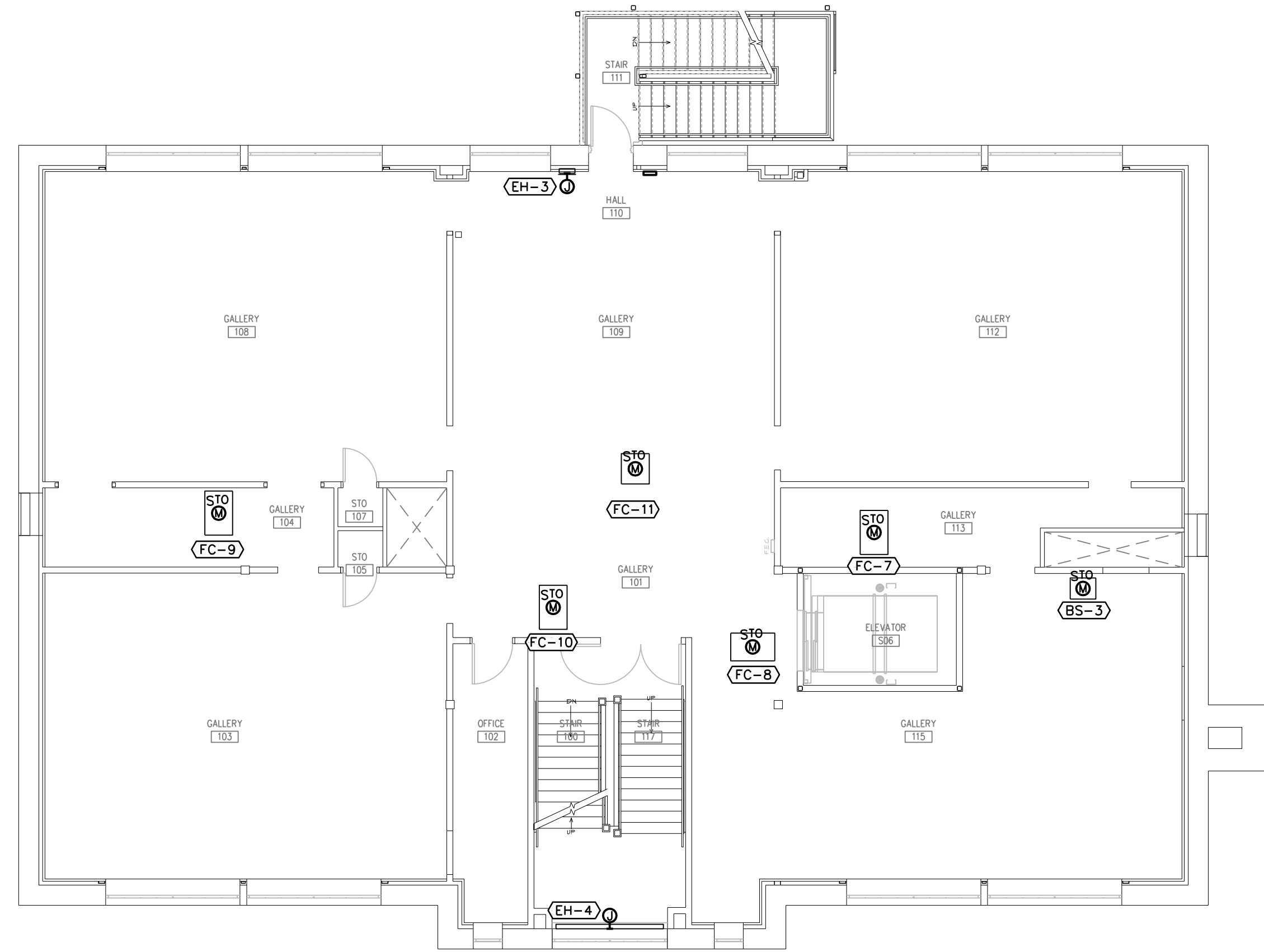
DISK ID.

SHEET TITLE  
PHASE 1  
MECHANICAL CONNECTIONS

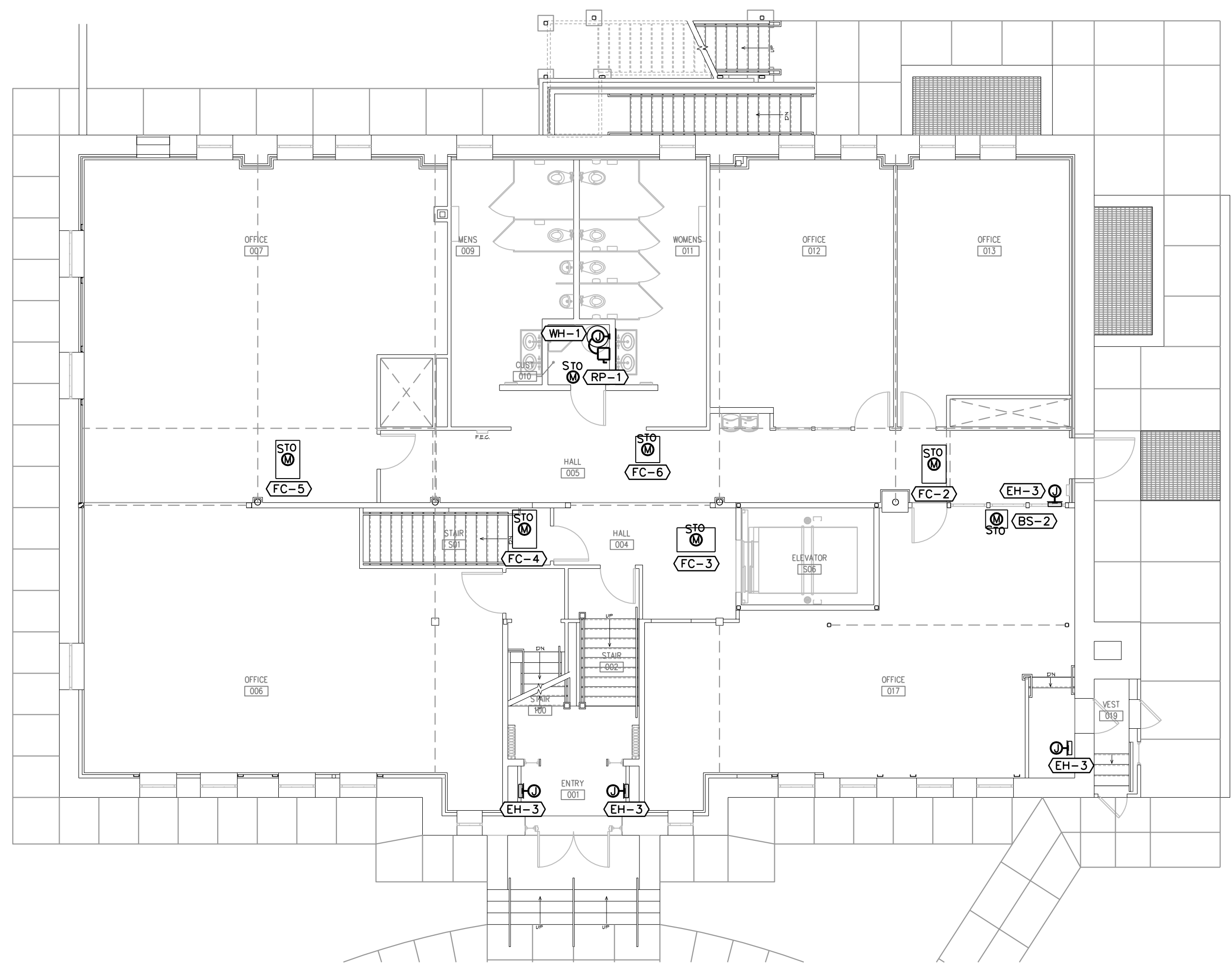
SHEET NUMBER  
16.30



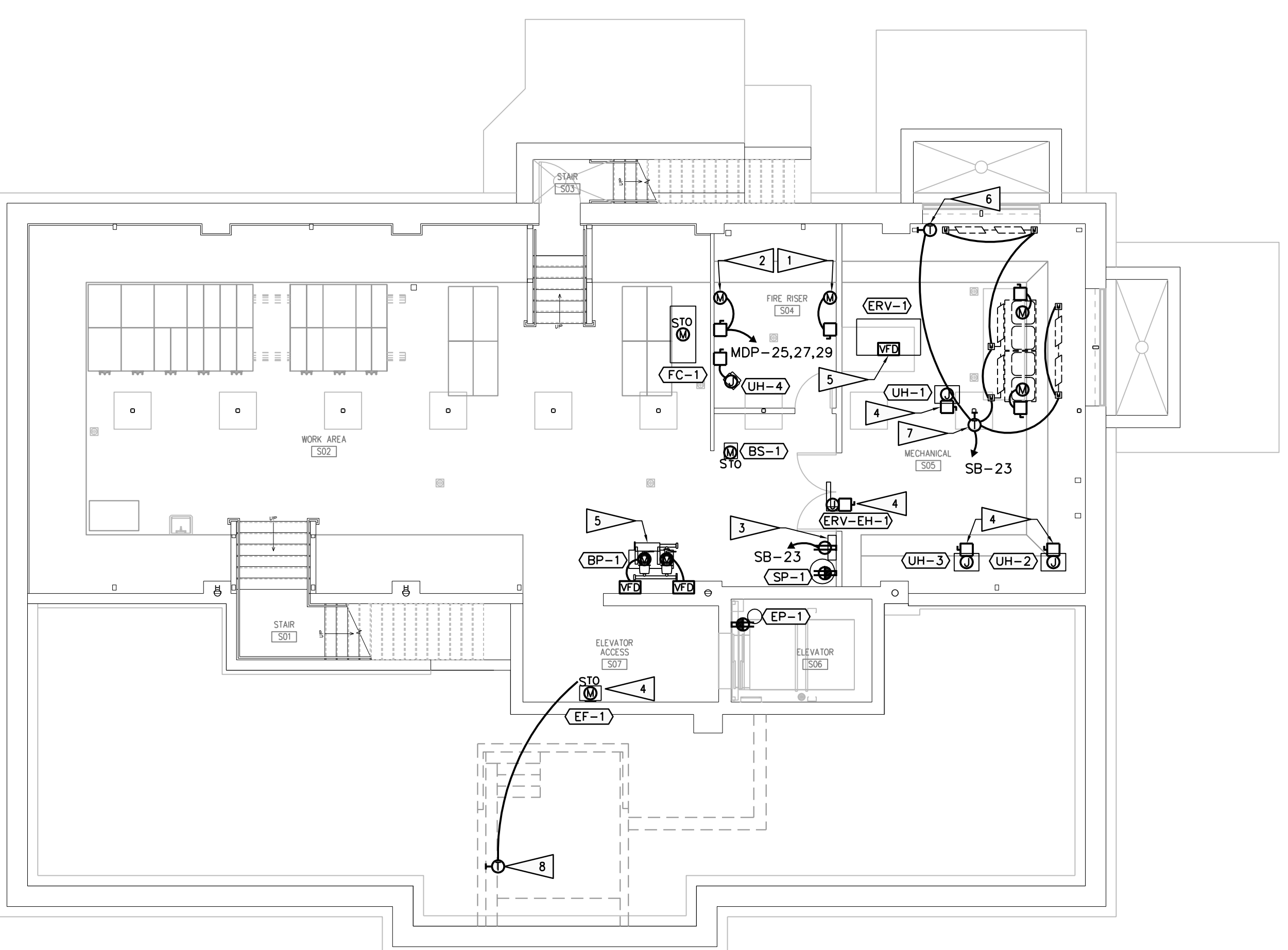
1/8" = 1'-0" 04



1/8" = 1'-0" 03



1/8" = 1'-0" 02



1/8" = 1'-0" 01

SECOND FLOOR MECHANICAL CONNECTIONS

FIRST FLOOR MECHANICAL CONNECTIONS

BASEMENT MECHANICAL CONNECTIONS

SUB-BASEMENT MECHANICAL CONNECTIONS