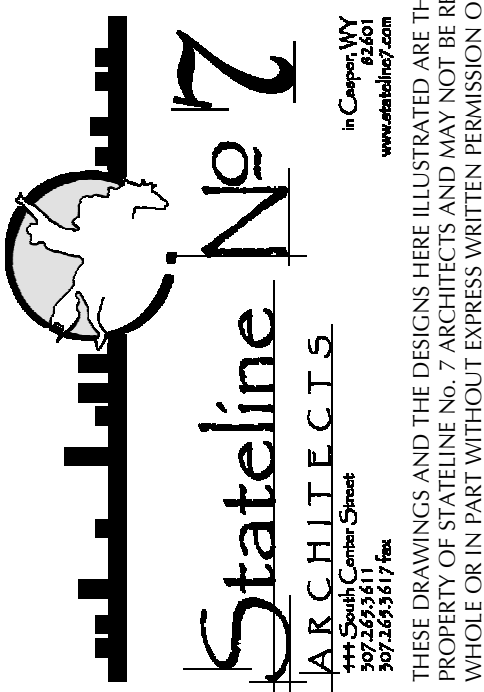




OLD STONEY REMODEL
PHASE ONE
108 NORTH 4TH STREET
SUNDANCE, WYOMING 82729



MARTIN/MARTIN
WYOMING
ARCHITECTS
4020 JARANIE STREET, CHEYENNE, WYOMING 82001
307.637.8422
WWW.MMW.COM

PROJECT
16-025

DATE
11/20/17

DRAWN
NAO

DISK

SHEET
BASEMENT

SHEET

2.11

BASEMENT PLAN NOTES:

- NOT ALL EXISTING ELEMENTS ARE SHOWN. THE INTENT IS TO SHOW ITEMS ADJACENT AND RELATIVE TO NEW STRUCTURAL ELEMENTS. CONTRACTOR TO FIELD VERIFY SIZE AND LOCATION OF (E) ELEMENTS PRIOR TO FABRICATION OR CONSTRUCTION OF NEW WORK.
- NEW OPENINGS IN EXISTING STONE NOT SHOWN ON DRAWINGS SHALL BE SUBMITTED FOR REVIEW PRIOR TO CUTTING.
- SEE ARCHITECTURAL AND MECHANICAL DRAWINGS FOR MECHANICAL, ELECTRICAL, OR PLUMBING PENETRATIONS THRU (E) FRAMING.
- REFER TO ARCHITECT'S DRAWINGS FOR ADDITIONAL INFORMATION OF DEMOLISHED AND MODIFIED (E) ELEMENTS.
- METAL DECK SHALL BE 2VLI-18 GAGE DECK. DECK SHALL HAVE MINIMUM PROPERTIES SHOWN BELOW:
 Fy = 50 KSI
 Iy = 0.559 (IN⁴)
 Ix = 0.558 (IN⁴)
 Sx = 0.495 (IN³)
 Sy = 0.504 (IN³)

DESIGNATION	CONCRETE OVER HIGH HATS	TOTAL THICKNESS	REINF
2VLI2	2"	4"	6x6-W2.9xW2.9 WWR
2VLI3	3"	5"	#4's AT 18" OC EW

- CLEAN AND COAT ALL STRUCTURAL STEEL SHOWING RUST OR DELAMINATION WITH AN ANTI-CORROSIVE, ZINC RICH, COATING. PREPARE SURFACE PER COATING MANUFACTURER'S RECOMMENDATIONS. NOT ALL LOCATIONS ARE MARKED ON PLAN.
- AT LOCATIONS (E) DECKING IS CUT AND REMOVED TO FACILITATE NEW WORK. PROVIDE NEW SHEATHING OR 1" DECKING THAT MATCHES FINISHED FLOOR ELEVATIONS OF EXISTING FLOOR DECKING. MULTIPLY SHEATHING OR USE OF LEVELING COMPOUND ARE ACCEPTABLE IF COMPATIBLE WITH ARCHITECTURAL FLOOR FINISHES.
- DO NOT CUT (E) JOISTS UNLESS ITS UNAVOIDABLE. CONTRACTOR TO FIELD COORDINATE MEP/(E) JOIST CONFLICTS; LOCATIONS ARE NOT SHOWN ON STRUCTURAL DRAWINGS.
- PROTECT OPEN SLAB EXCAVATIONS SUCH THAT SOIL MOISTURE CONTENT IS MAINTAINED UNTIL NEW SLAB IS IN PLACE.

TYPICAL DETAIL REFERENCES:

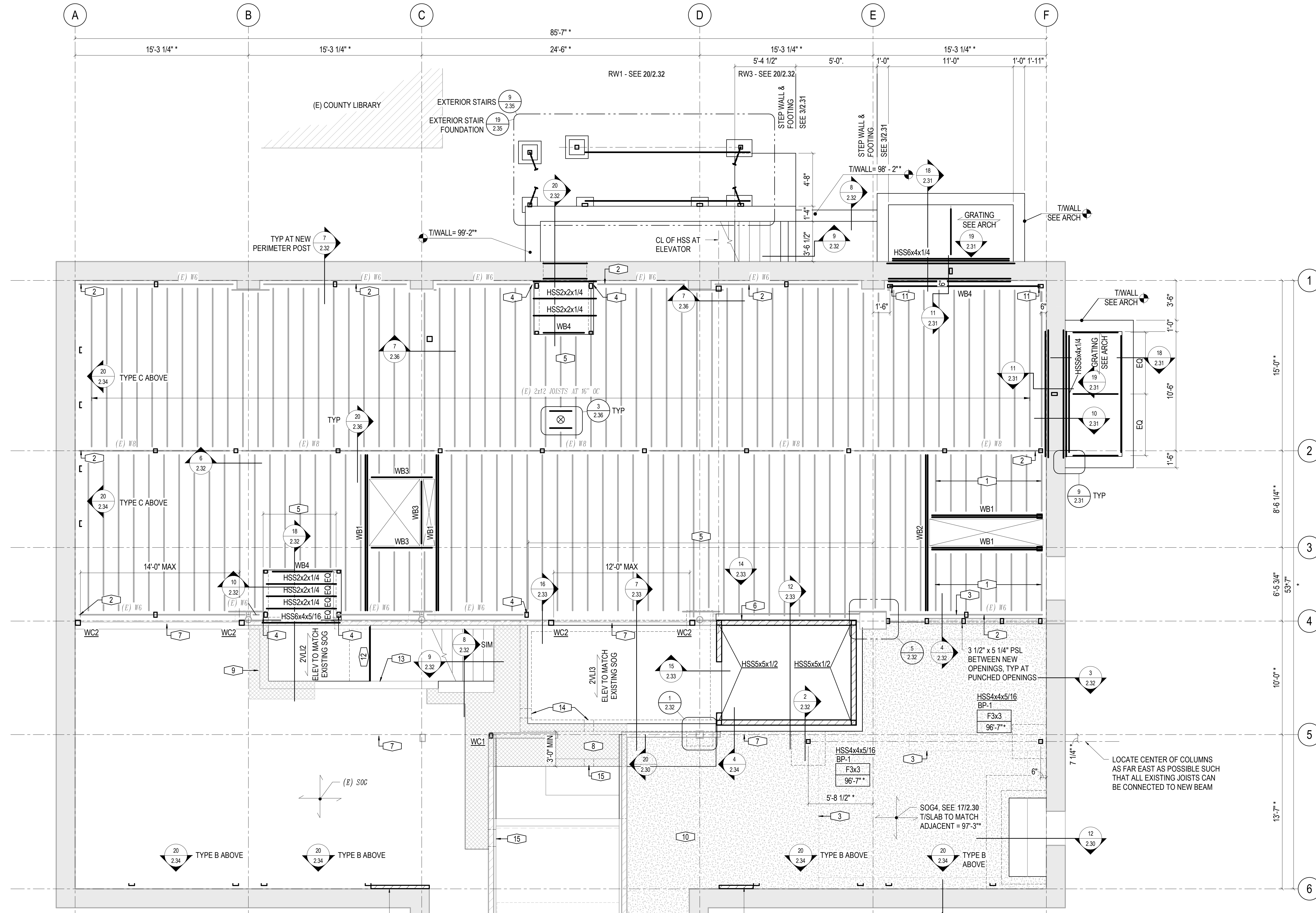
- 7/2.30 FOR CONCRETE REINFORCING REQUIREMENTS
- 17/2.30 FOR SLAB ON GRADE KEY PLAN
- 11/2.30 FOR SPREAD FOOTINGS SCHEDULE AND REQUIREMENTS
- 10/2.30 FOR BASE PLATES
- 6/2.31 TYPICAL HORIZ WALL REINF AT CORNERS AND INTERSECTIONS
- 2/2.36 FOR WOOD FRAMING NAILING
- 10/2.36 FOR WOOD NOTCHING AND HOLE REQUIREMENTS

SYMBOLS:

- X'-XX" DIMENSIONS TO EXISTING STRUCTURE, FIELD VERIFY (ASTERIC)
- SLAB TYPE
- SLAB THICKNESS
- SOG/XX T/SLAB
- XXX'-XX" T/SLAB
- F1 FTG MARK (SF = STRIP FTG)
- XX'-X" T/FTG EL
- XXX COLUMN SIZE OR MARK
- BP-X BASE PLATE TYPE
- WC(#) WOOD COLUMN MARK (#), SEE 6/2.36
- WB(#) WOOD BEAM MARK (#), SEE 9/2.36
- DECK TYPE
- 2VLI-X ABOVE DECK CONCRETE THICKNESS

KEYNOTES:

- CUT EXISTING JOISTS AND FLOOR SHEATHING AS REQUIRED TO INSTALL NEW HANGERS, DO NOT OVERCUT.
- KNOWN LOCATIONS OF RUST OR DELAMINATION; NOT ALL LOCATIONS ARE MARKED. SEE BASEMENT PLAN NOTES ABOVE.
- REMOVE (E) STONE WALL AND INTERFERING FOUNDATION TO 8" MIN BELOW NEW SOG
- CUT (E) W6 AT FACE OF NEW COLUMNS TO ACHIEVE FULL BEARING ON NEW COLUMN
- REMOVE (E) W6
- SHORE AS REQUIRED AND REMOVE EXISTING 2x6 WALL; REPLACE WITH ELEVATOR SHAFT WALL.
- SHORE AS REQUIRED TO REMOVE EXISTING 2x6 LOAD BEARING WALL UNTIL NEW BEAMS AND/OR FRAMING IS IN PLACE
- REMOVE AND REPLACE SOG AS REQUIRED FOR ELEVATOR PIT, FOUNDATION WALLS, UNDERGROUND DUCTS, ETC.; SUPPORT ALL EXISTING STRUCTURE AND PROTECT ALL ELEMENTS TO REMAIN IN FINISHED CONDITION.
- CUT AND REMOVE CONCRETE WALL EXTENDING ABOVE FLOOR TO AT LEAST 4" BELOW FINISHED SLAB TO ALLOW NEW SLAB TO POUR OVER TOP OF WALL
- REMOVE AND REPLACE SLAB-ON-GRADE, SEE ARCH FOR EXTENTS.
- BRACE T/WOOD COLUMN SIM TO 7/2.32
- DECK EDGE ANGLE L4x4x5/16, AT CORNERS TRIM HORIZ LEG AND 1/4" FILLET WELD TO PERPENDICULAR ANGLES.
- REMOVE (E) STAIRS; EXISTING FOUNDATION WALL MAY NEED TO BE EXTENDED DOWN TO ACCOMMODATE NEW STAIR PROFILE. WALL TO EXTEND TO BOTTOM OF CIP STAIRS MINIMUM
- DUCT PENETRATIONS THRU NEW FOUNDATION WALL; REINF PER 19/2.30 TOP OF DUCT TO BE 12" MIN FROM TOP OF WALL.
- PROVIDE C4x5.4 3" MAX ABOVE NEW DUCT PENETRATION PRIOR TO CUTTING; EXTEND 6" BEYOND PENETRATION EA END. ATTACH TO WALL WITH (3) 3/8" SCREW ANCHORS WITH 4" MIN EMBEDMENT; LOCATE 2" FROM ENDS AND CENTERED ON NEW PENETRATION. DO NOT CUT ADJACENT EXISTING CONC BEAM.



BASEMENT
NORTH 1/4" = 1'-0"