

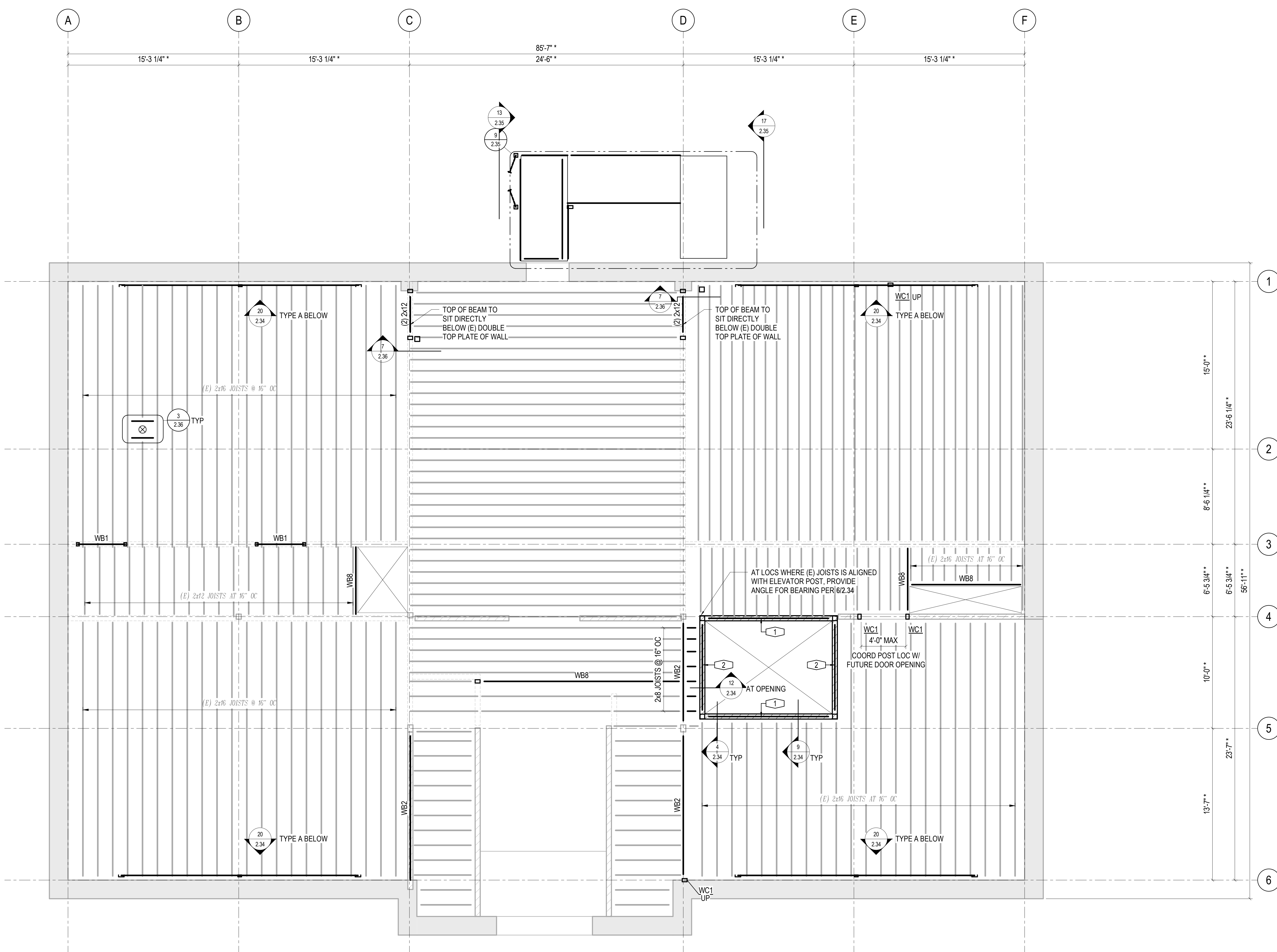


- SECOND FLOOR PLAN NOTES:**
1. NOT ALL EXISTING ELEMENTS ARE SHOWN. THE INTENT IS TO SHOW ITEMS ADJACENT AND RELATIVE TO NEW STRUCTURAL ELEMENTS. CONTRACTOR TO FIELD VERIFY SIZE AND LOCATION OF (E) ELEMENTS PRIOR TO FABRICATION OR CONSTRUCTION OF NEW WORK.
  2. NEW OPENINGS IN EXISTING STONE NOT SHOWN ON DRAWINGS SHALL BE SUBMITTED FOR REVIEW PRIOR TO CUTTING.
  3. SEE ARCHITECTURAL AND MECHANICAL DRAWINGS FOR MECHANICAL, ELECTRICAL, OR PLUMBING PENETRATIONS THRU (E) FRAMING.
  4. REFER TO ARCHITECT'S DRAWINGS FOR ADDITIONAL INFORMATION OF DEMOLISHED AND MODIFIED (E) ELEMENTS.
  5. CONTRACTOR VERIFY DIMENSIONS OF (E) ROUGH SAWN LUMBER TO ENSURE PROPER FIT AND INSTALLATION OF JOIST HANGERS.
  6. AT ALL HSS WITH EXPOSED ENDS, PROVIDE 3/16" CAP PL WITH 1/8" SEAL WELD UNLESS NOTED OTHERWISE.
  7. AT LOCATIONS (E) DECKING IS CUT AND REMOVED TO FACILITATE NEW WORK, PROVIDE NEW SHEATHING OR 1x DECKING THAT MATCHES FINISHED FLOOR ELEVATIONS OF EXISTING FLOOR DECKING. MULTI-PLY SHEATHING OR USE OF LEVELING COMPOUND ARE ACCEPTABLE IF COMPATIBLE WITH ARCHITECTURAL FLOOR FINISHES.
  8. REMOVE 'X-BRACING' BETWEEN FLOOR JOISTS AS REQUIRED FOR MEP. DO NOT REMOVE (2) ADJACENT ROWS, ALL JOISTS MUST HAVE 'X-BRIDGING' ATTACHED TO ONE SIDE.

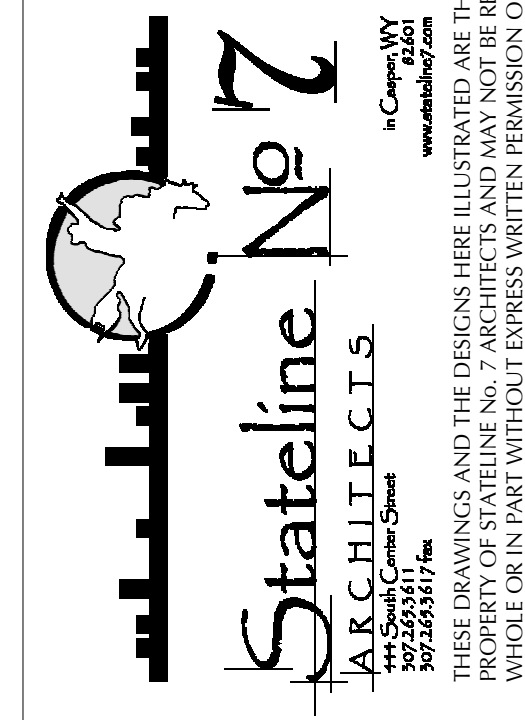
- TYPICAL DETAIL REFERENCES:**
- 2/2.36 FOR WOOD FRAMING NAILING
  - 10/2.36 FOR WOOD NOTCHING AND HOLE REQUIREMENTS

- SYMBOLS:**
- X-XX" DIMENSIONS TO EXISTING STRUCTURE, FIELD VERIFY (ASTERIC)
  - WC(#) WOOD COLUMN MARK (#), SEE 6/2.36
  - WB(#) WOOD BEAM MARK (#), SEE 9/2.36

- KEYNOTES:**
- 1 HSS5x5x5/16, SPACE AS REQ'D BY THE ELEVATOR MANUFACTURER FOR ELEVATOR RAIL ATTACHMENT. GC TO COORDINATE EXACT LOCATIONS WITH ARCH/ELEV SUPPLIER DRAWINGS AND ELEVATOR SUPPLIER. HSS DESIGNED FOR 690# PERPENDICULAR TO HSS AND 920# PARALLEL TO HSS. GC TO PROVIDE EOR WITH FINAL ELEVATOR SELECTION AND LOADS.
  - 2 HSS5x5x5/16, LOCATE AT EACH FLOOR ADJACENT TO THE NEAREST ELEVATOR RAIL SUPPORT, 12'-0" OC MAX.



OLD STONEY REMODEL  
 PHASE ONE  
 108 NORTH 4TH STREET  
 SUNDANCE, WYOMING 82729



MARTIN/MARTIN  
 WYOMING  
 ARCHITECTS  
 4020 JARAMEE STREET, CHEYENNE, WYOMING 82001  
 307.637.8422  
 WWW.MMMW.COM

PROJECT  
 16-025

DATE  
 11/20/17

DRAWN  
 NAO

DISK

SHEET  
 SECOND FLOOR

SHEET

2.13

**SECOND LEVEL**  
 NORTH  
 1/4" = 1'-0"