



ROOF & ATTIC FRAMING PLAN NOTES:

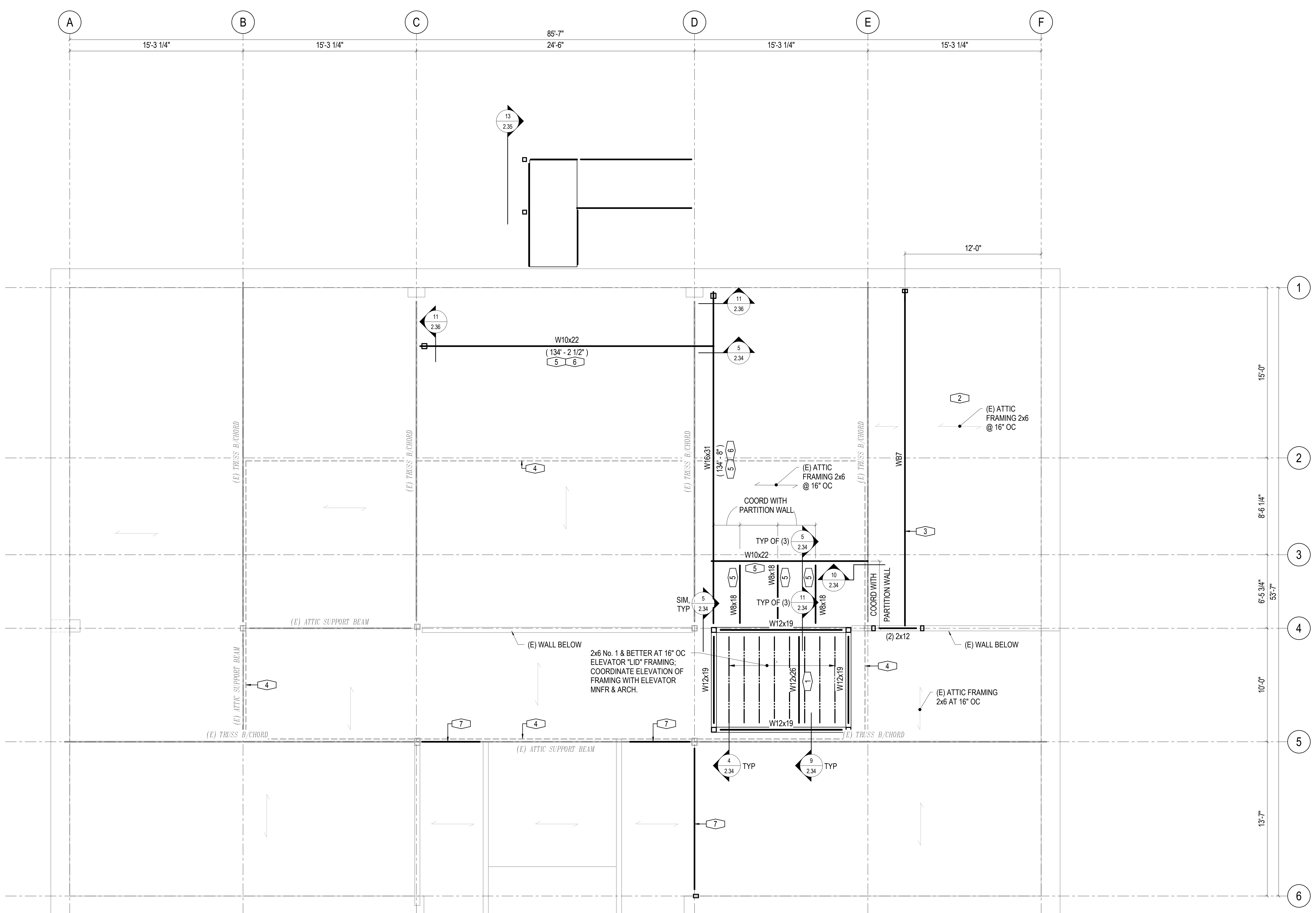
1. NOT ALL EXISTING ELEMENTS ARE SHOWN. THE INTENT IS TO SHOW ITEMS ADJACENT AND RELATIVE TO NEW STRUCTURAL ELEMENTS. CONTRACTOR TO FIELD VERIFY SIZE AND LOCATION OF (E) ELEMENTS PRIOR TO FABRICATION OR CONSTRUCTION OF NEW WORK.
2. NEW OPENINGS IN EXISTING STONE NOT SHOWN ON DRAWINGS SHALL BE SUBMITTED FOR REVIEW PRIOR TO CUTTING.
3. SEE ARCHITECTURAL AND MECHANICAL DRAWINGS FOR MECHANICAL, ELECTRICAL, OR PLUMBING PENETRATIONS THRU (E) FRAMING.
4. REFER TO ARCHITECT'S DRAWINGS FOR ADDITIONAL INFORMATION OF DEMOLISHED AND MODIFIED (E) ELEMENTS.
5. CONTRACTOR VERIFY DIMENSIONS OF (E) ROUGH SAWN LUMBER TO ENSURE PROPER FIT AND INSTALLATION OF JOIST HANGERS.
6. AT ALL HSS WITH EXPOSED ENDS, PROVIDE 3/16" CAP PL WITH 1/8" SEAL WELD UNLESS NOTED OTHERWISE.
7. DO NOT USE ATTIC FOR STORAGE OF ANY KIND.

SYMBOLS:

- X'-XX" * DIMENSIONS TO EXISTING STRUCTURE, FIELD VERIFY (ASTERIC)
- WC(#)- WOOD COLUMN MARK (#), SEE 6/2.36
- WB(#)- WOOD BEAM MARK (#), SEE 9/2.36
- SPAN DIRECTION OF (E) JOISTS

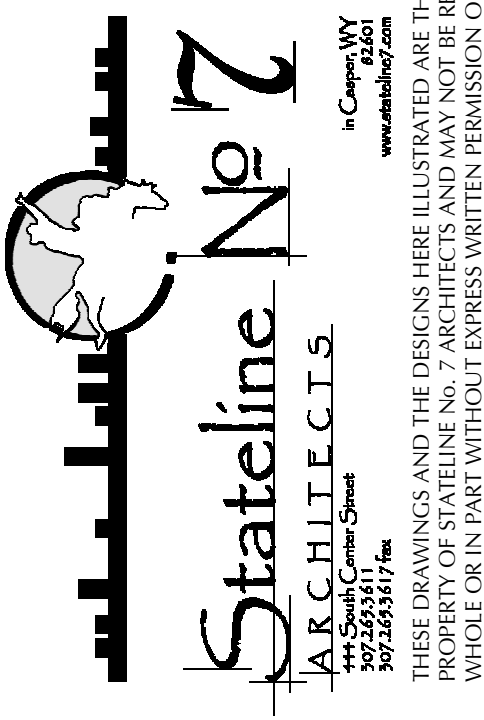
KEYNOTES:

- 1 ELEVATOR HOIST BEAM, GC TO COORDINATE ELEVATION AND LOCATION WITH ELEVATOR MNFR
- 2 CONTRACTOR'S OPTION TO PROVIDE NEW BM WHERE WALL PREVIOUSLY WAS REMOVED OR REMOVE AND REPLACE (E) JOISTS WITH 2x8'S NO. 1 OR BETTER TO SPAN BETWEEN TRUSS BOTTOM CHORD AND WALL. DESIGN LOADS FOR JOISTS/BEAM WERE TAKEN TO BE DL = 10 PSF AND LL = 5 PSF.
- 3 REMOVE POST AND (E) TOP PLATES FROM WALL THAT HAS PREVIOUSLY BEEN DEMOLISHED.
- 4 ADD STIFFENERS TO VERTICAL MEMBERS SPANNING BETWEEN WALLS THAT SUPPORT THE ATTIC FRAMING AND ROOF BEAMS; SEE 4/2.36. NOT ALL LOCATIONS ARE MARKED ON PLAN.
- 5 SHOP DRILL HOLES IN BOTTOM FLANGE FOR FUTURE PARTITION WALL HANGERS. GC TO COORD WITH PARTITION WALL MNFR. ELEVATION OF STEEL TO BE LOCATED TO CLEAR (E) BICHORD OF ROOF TRUSSES = 133'-4"
- 6 BRACE BOTTOM FLANGE TO ATTIC FRAMING AT 1/3 POINTS
- 7 NEW WOOD BEAMS FOR FUTURE PHASE



ROOF FRAMING & ATTIC FRAMING
 NORTH 1/4" = 1'-0"

OLD STONEY REMODEL
 PHASE ONE
 108 NORTH 4TH STREET
 SUNDANCE, WYOMING 82729



MARTIN/MARTIN
WYOMING
 ARCHITECTS
 4000 JARAMEE STREET, CHEYENNE, WYOMING 82001
 307.637.8422
 MMWYO.COM

PROJECT	16-025
DATE	11/20/17
DRAWN	NAO
DISK	
SHEET	ROOF FRAMING & ATTIC FRAMING
SHEET	