

GENERAL NOTES

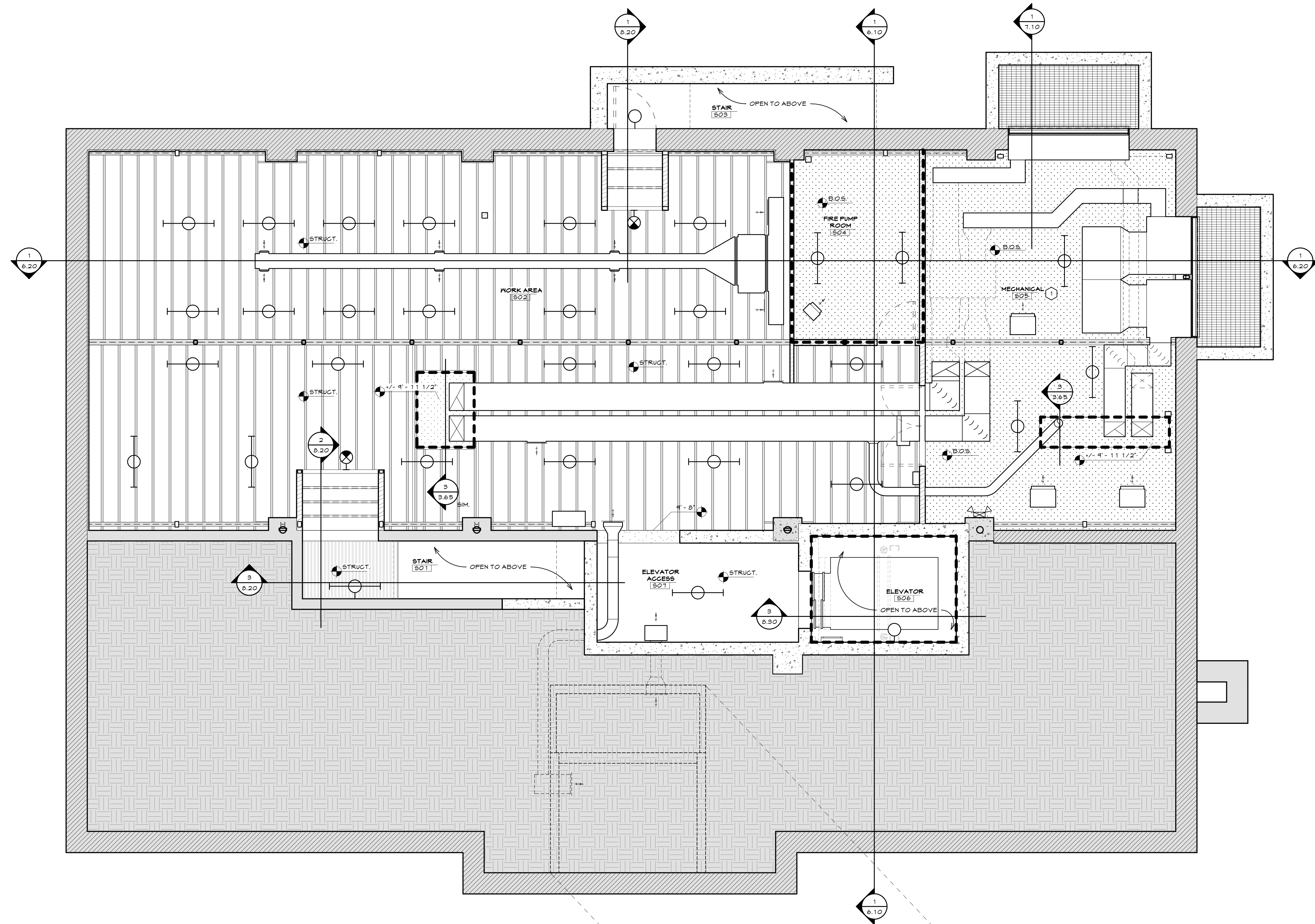
- GENERAL NOTES, KEYNOTES, AND LEGEND ON THIS SHEET REFER TO THIS SHEET ONLY.
- SEE CIVIL, STRUCTURAL, MECHANICAL, AND ELECTRICAL PLANS FOR ADDITIONAL INFORMATION.
- ALL EXPOSED STRUCTURAL STEEL TO BE LEFT PRIMED, UNFINISHED.
- ALL EXPOSED DUCTWORK TO BE LEFT UNFINISHED.
- PROVIDE FLUSH METAL (FIRE RATED WHERE REQUIRED) CEILING AND WALL ACCESS DOORS OF SIZE NECESSARY TO ACCESS MECHANICAL AND ELECTRICAL ITEMS REQUIRING ACCESS - SEE THE SPECIFICATIONS, COORDINATE WITH THE MECHANICAL AND ELECTRICAL REQUIREMENTS AND VERIFY QUANTITIES, SIZES, AND LOCATIONS. (ACCESS DOORS ARE NOT SHOWN ON THIS SHEET).

LEGEND

-
-
-
-
-
-
-
-
-
-
-

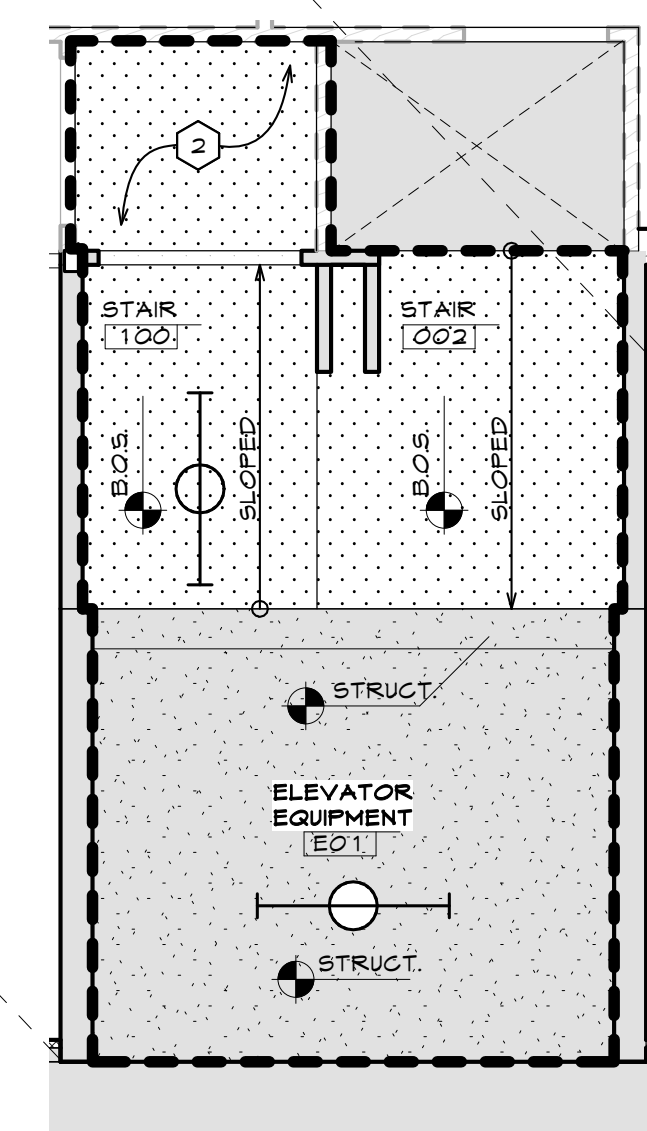
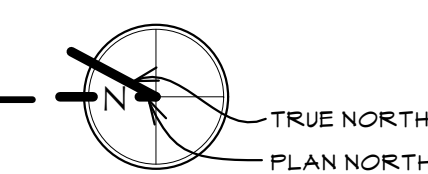
KEYNOTES

- PROVIDE FULL BATT THERMAL INSULATION IN ABOVE CEILING JOIST SPACE ENTIRE ROOM.
- SEE BASEMENT REFLECTED CEILING PLAN ON SHEET 3.65 FOR CEILING OVER THIS AREA.



SUB-BASEMENT REFLECTED CEILING PLAN

SCALE: 1/4" = 1'-0"



ELEVATOR EQUIPMENT ROOM

SCALE: 1/4" = 1'-0"

OLD STONEY REMODEL
PHASE ONE
108 NORTH 4TH STREET
SUNDANCE, WYOMING 82729



PROJECT NUMBER
16-022

DATE
11-20-2017

DRAWN BY
KFOX
A WILLIAMSON

DISK ID.
16-022 Old
Stoney/16-022_Old
Stoney.rvt

SHEET TITLE
SUB-BASEMENT
AND ELEVATOR
EQUIPMENT
ROOM REFLECTED
CEILING PLANS

SHEET NUMBER

3.60