

GENERAL NOTES

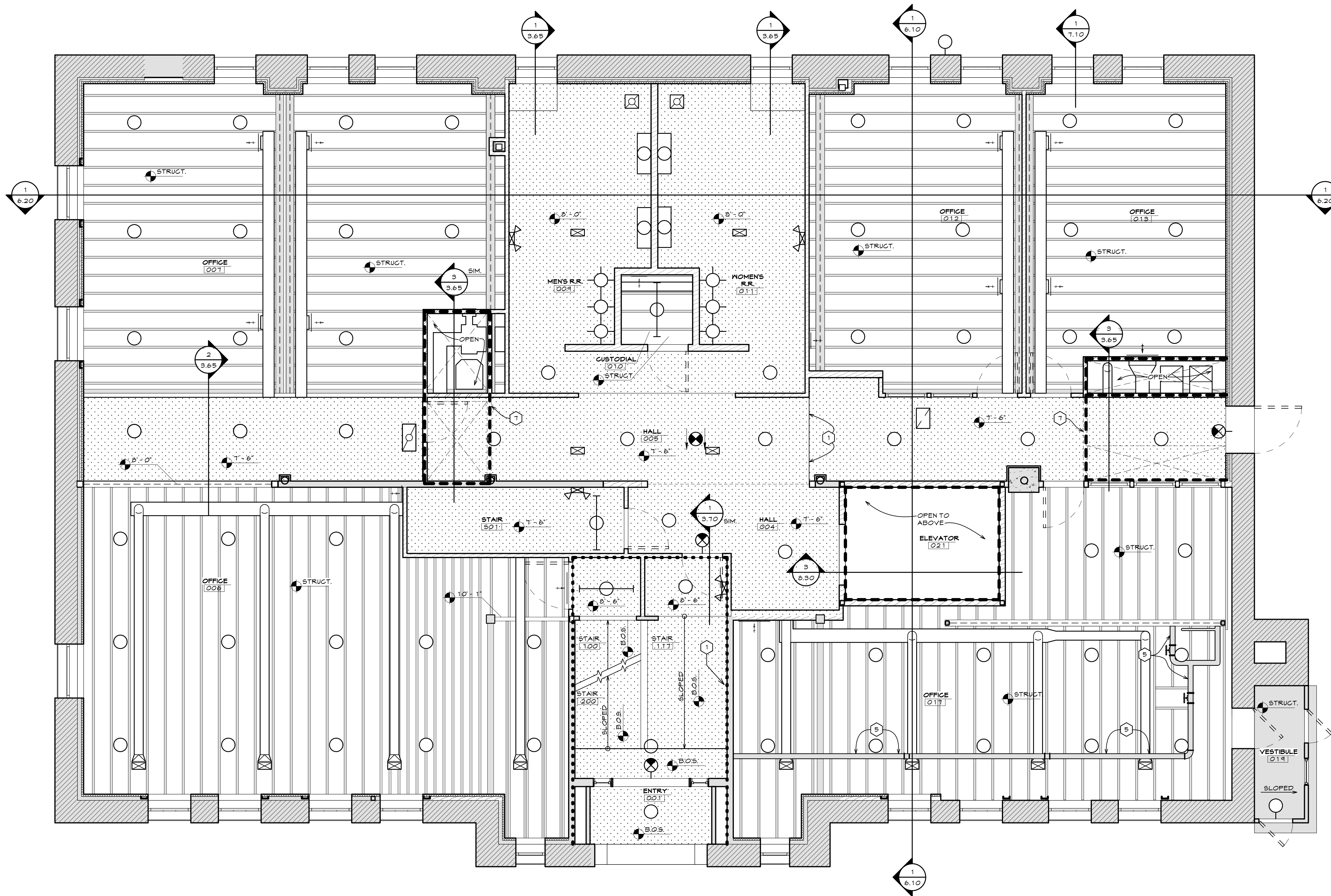
- GENERAL NOTES, KEYNOTES, AND LEGEND ON THIS SHEET REFER TO THIS SHEET ONLY.
- SEE CIVIL, STRUCTURAL, MECHANICAL, AND ELECTRICAL PLANS FOR ADDITIONAL INFORMATION.
- ALL EXPOSED STRUCTURAL STEEL TO BE LEFT PRIMED, UNFINISHED.
- ALL EXPOSED DUCTWORK TO BE LEFT UNFINISHED.
- ALL DIMENSIONS ARE TO THE FACE OF FOUNDATION MASONRY, OR STUDS UNLESS NOTED OTHERWISE.
- PROVIDE FLUSH METAL (FIRE RATED WHERE REQUIRED) CEILING AND WALL ACCESS DOORS OF SIZE NECESSARY TO ACCESS MECHANICAL AND ELECTRICAL ITEMS REQUIRING ACCESS - SEE THE SPECIFICATIONS, COORDINATE WITH THE MECHANICAL AND ELECTRICAL REQUIREMENTS AND VERIFY QUANTITIES, SIZES, AND LOCATIONS. (ACCESS DOORS ARE NOT SHOWN ON THIS SHEET).

LEGEND

- 5/8" GYPSUM BOARD CEILING
- EXISTING ITEMS - TO REMAIN UNLESS NOTED OTHERWISE
- LIGHT FIXTURES, SEE ELECTRICAL SHEETS
- SUPPLY GRILLE, SEE MECHANICAL DRAWINGS
- EXHAUST GRILLE, SEE MECHANICAL DRAWINGS
- RETURN GRILLE, SEE MECHANICAL DRAWINGS
- STRUCT. OPEN TO STRUCTURE ABOVE
- 8'-0" CEILING TO BE INSTALLED AT HEIGHT INDICATED ABOVE THE FINISH FLOOR SURFACE IMMEDIATELY BELOW
- 8'-0" CEILING TO BE INSTALLED DIRECTLY TO BOTTOM OF STRUCTURE ABOVE
- INDICATES LINE OF FIRE RATING, SEE THE FLOOR PLAN

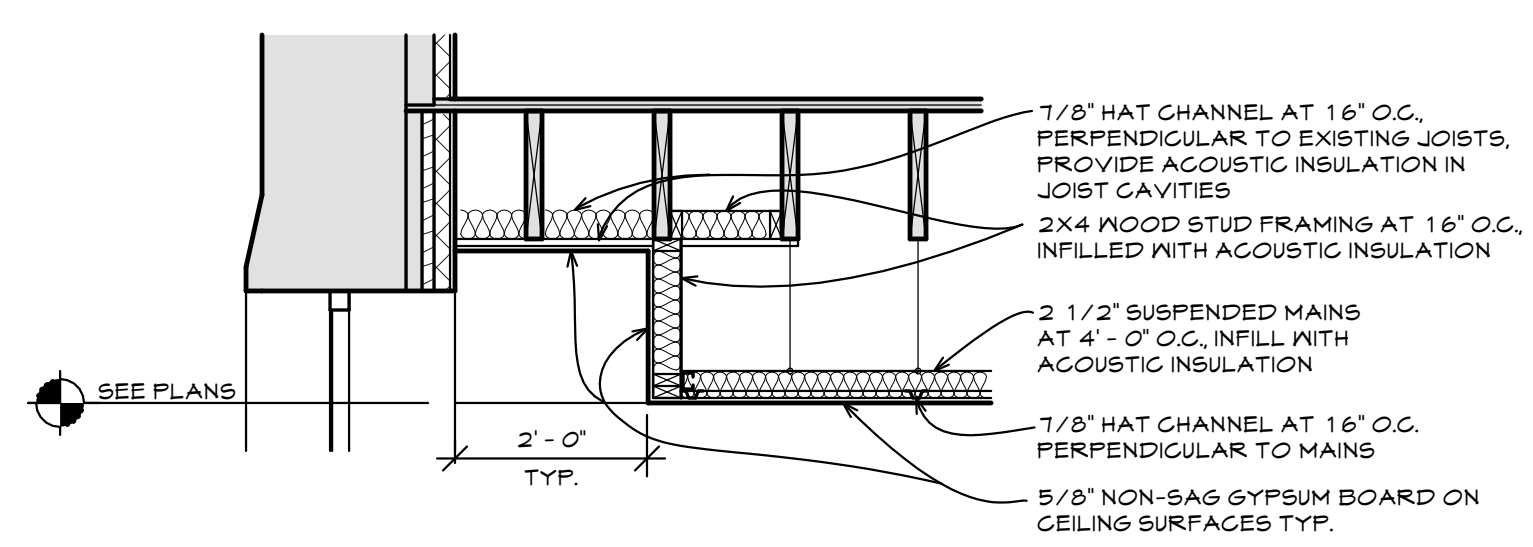
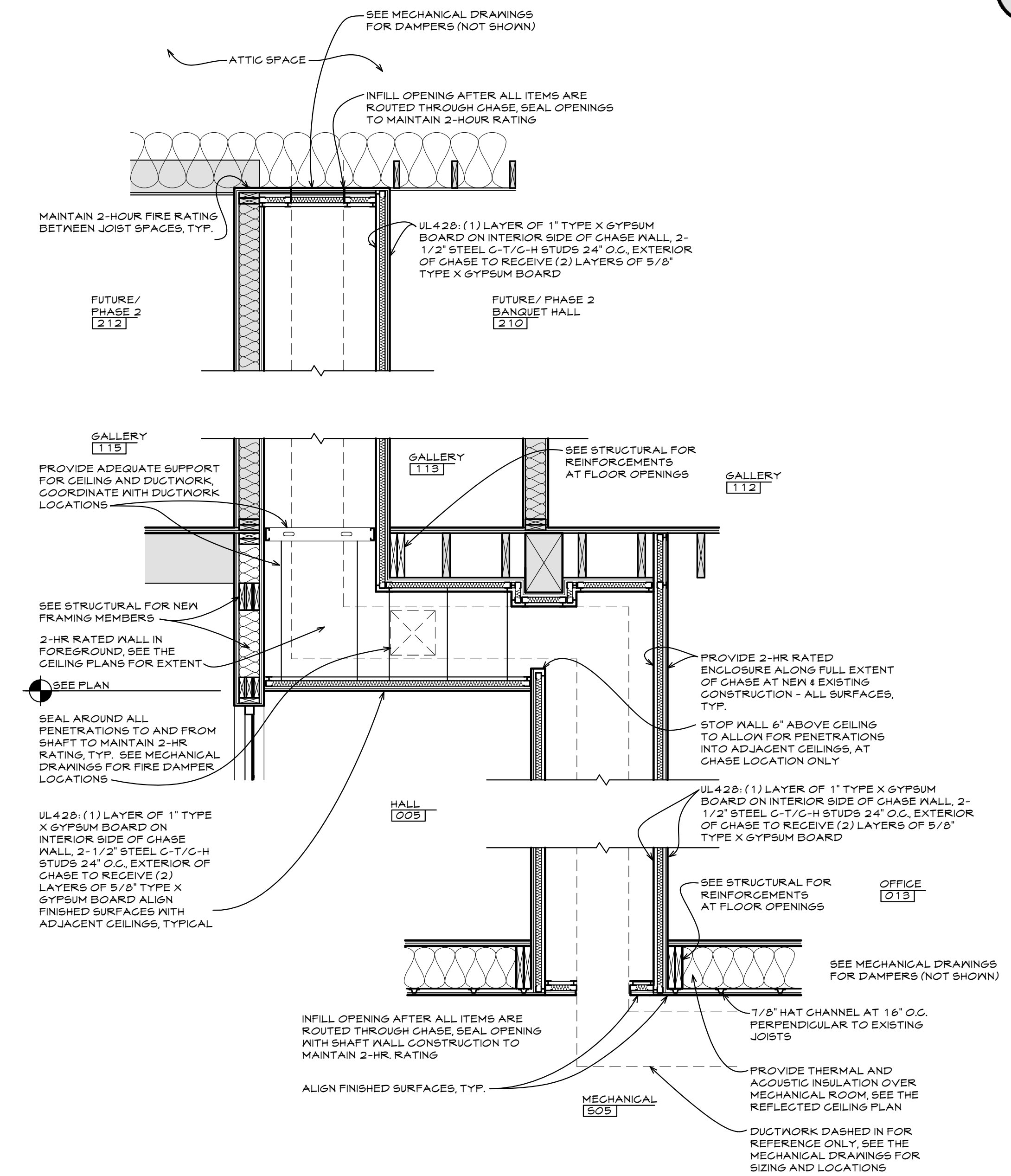
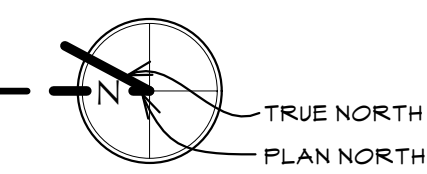
KEYNOTES

- LOCATION OF "V" - SHAPED GYPSUM EXPANSION JOINT.
- NOT USED.
- NOT USED.
- NOT USED.
- EXISTING BOILER PIPING TO REMAIN OVER THIS AREA - COORDINATE WITH NEW CONSTRUCTION ITEMS AND GOVERN EXTENT WITH OWNER.
- NOT USED.
- ALIGN GYPSUM SURFACES AT SHAFT WALL, SEE DETAIL 3 THIS SHEET.

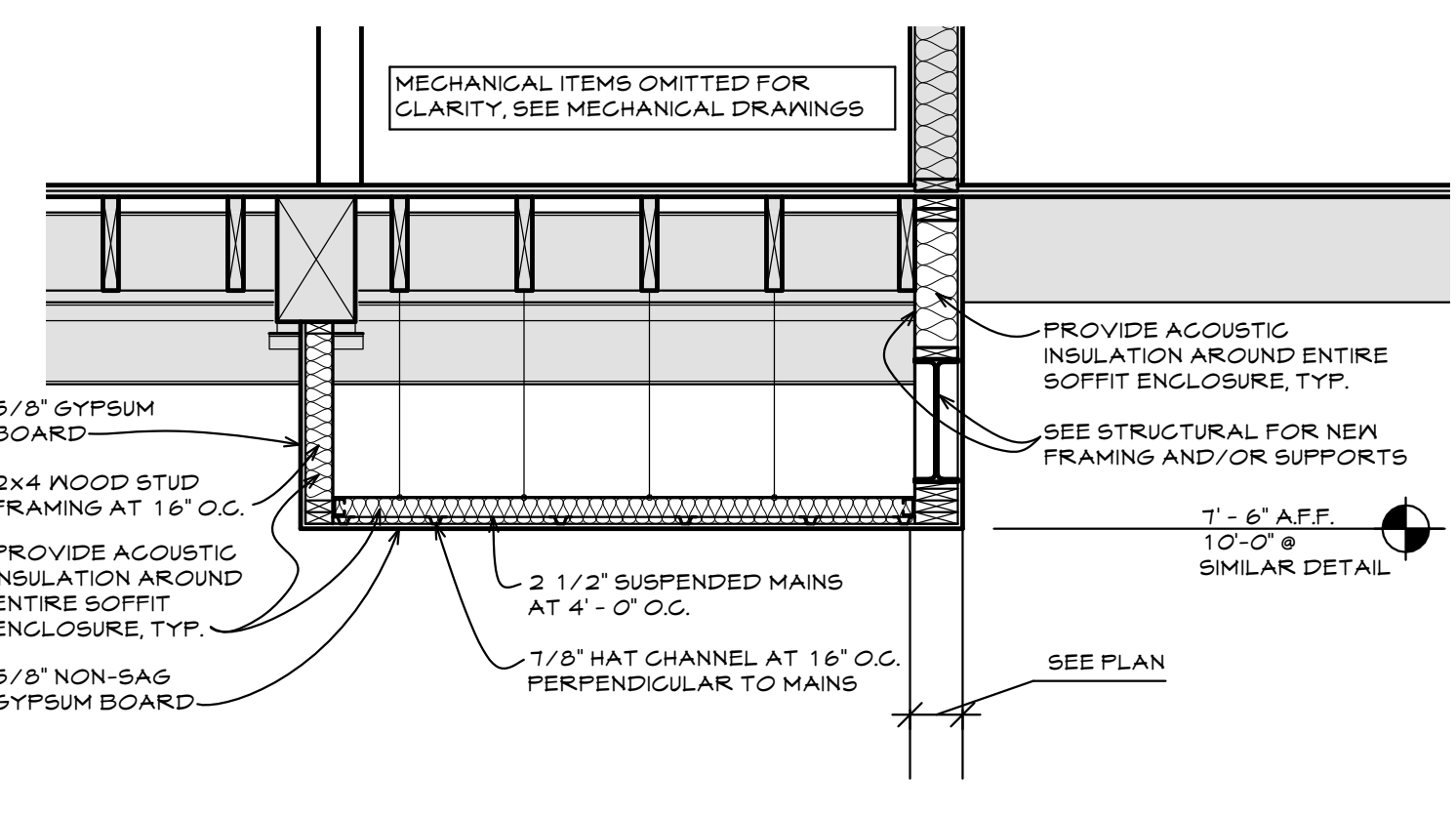


BASEMENT REFLECTED CEILING PLAN

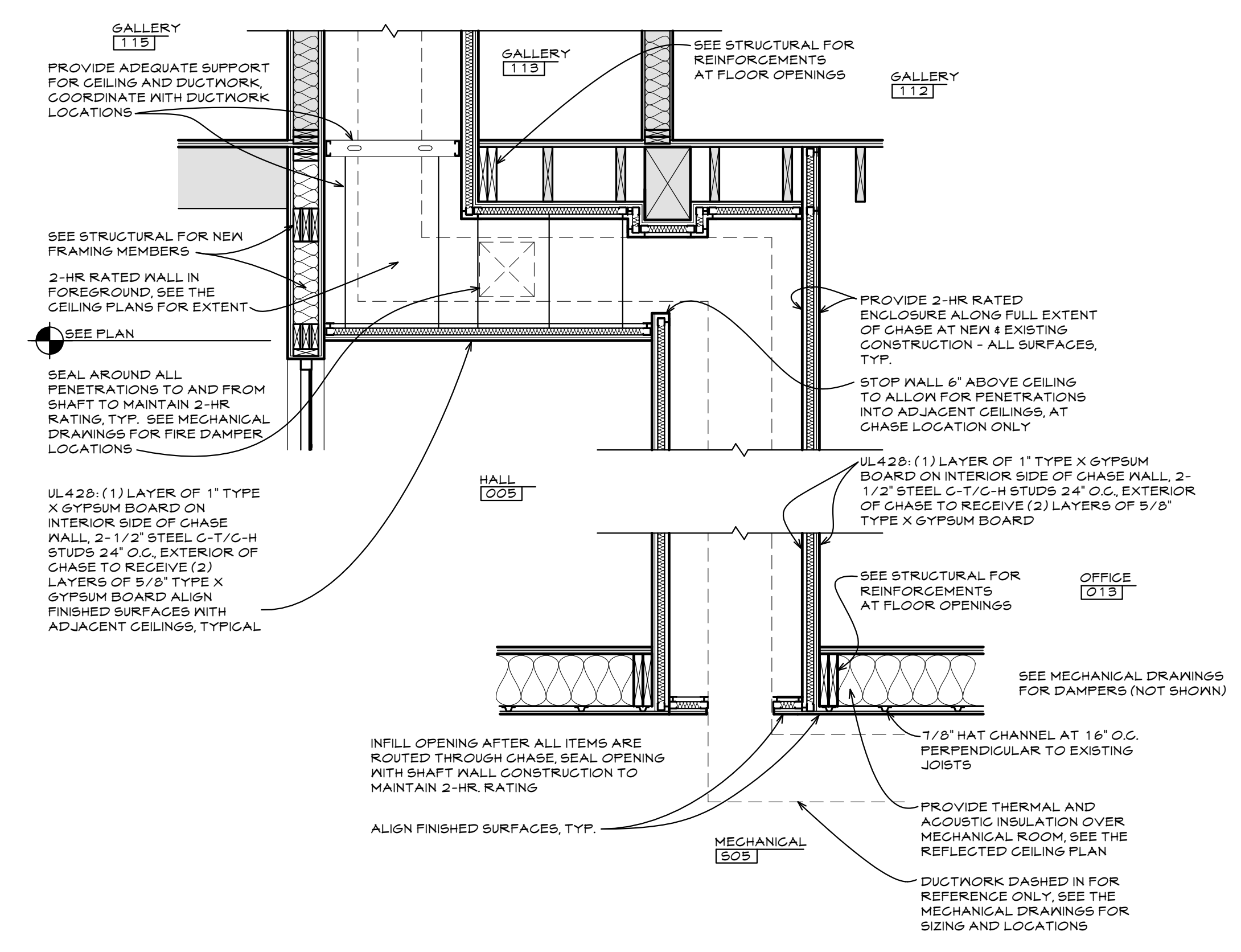
- PHASE 1
SCALE: 1/4" = 1'-0"



① WINDOW WELL
SCALE: 1/2" = 1'-0"



② SOFFIT DETAIL
SCALE: 1/2" = 1'-0"



③ MECHANICAL CHASE
SCALE: 1/2" = 1'-0"

OLD STONEY REMODEL
PHASE ONE
108 NORTH 4TH STREET
SUNDANCE, WYOMING 82729



PROJECT NUMBER
16-022

DATE
11-20-2017

DRAWN BY
KFOX
A WILLIAMSON

DISK ID.
16-022 Old
Stoney/16-022_Old
Stoney.rvt

SHEET TITLE
BASEMENT
REFLECTED
CEILING PLAN

SHEET NUMBER
3.65